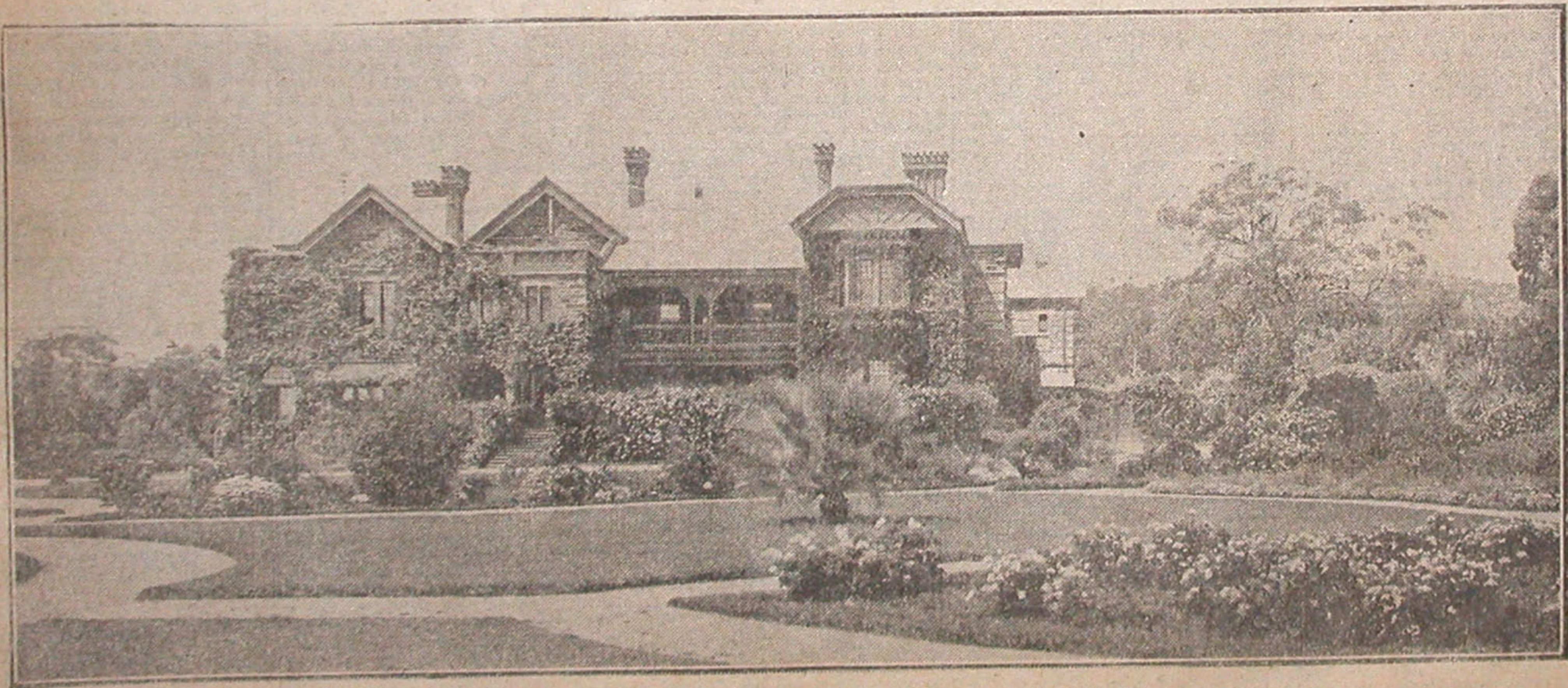


UNIVERSITY RESIDENTIAL COLLEGE.



PRESENTED BY THE FAMILY OF SIR JOHN AND LADY DUNCAN.

It is proposed by the family of Sir John and Lady Duncan to transfer their former residence, "Strathspey," Mitcham, with about 19 acres of grounds, to trustees for the purposes of a residential college, in affiliation with the University of Adelaide and in connection with the Presbyterian Church in South Australia. The Council of the University, at its meeting on Friday last, and the General Assembly of the Presbyterian Church, at its meeting yesterday, expressed cordial appreciation of the proposal and thanks to the donors for their munificent gift. This is the second residential college to be founded in connection with the University, St. Mark's having obtained affiliation in 1924. The photograph indicates the spaciousness of "Strathspey" and the beauty of its grounds.