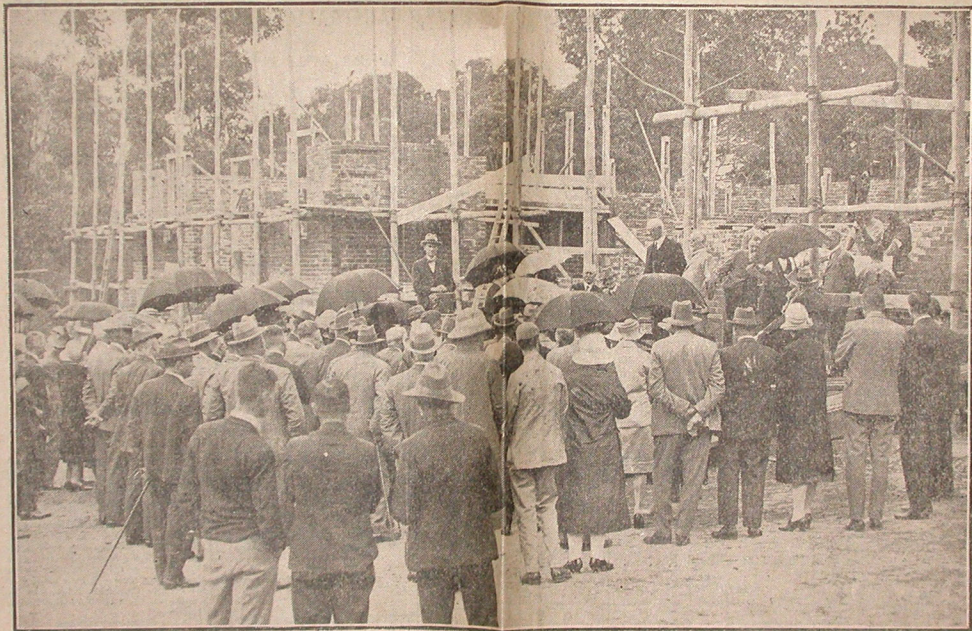


AGRICULTURE THE FOUNDATION OF THE STATE'S PROSPERITY.



SIR GEORGE MURRAY AT THE WAITE INSTITUTE.

The Chancellor of the University (Sir George Murray) detailed the genesis and development of the Waite Agricultural Research Institute yesterday prior to asking Miss Melrose to lay the foundation-stone of the Melrose Laboratory.

F. M. Gray, photo.