

PUBLISHED VERSION

Hari Singhal, Marianne E. Greene, Gerard Tarulli, Allison L. Zarnke, Ryan J. Bourgo, Muriel Laine, Ya-Fang Chang, Shihong Ma, Anna G. Dembo, Ganesh V. Raj, Theresa E. Hickey, Wayne D. Tilley, Geoffrey L. Greene

Genomic agonism and phenotypic antagonism between estrogen and progesterone receptors in breast cancer

Science Advances, 2016; 2(6):e1501924

2016 © The Authors, some rights reserved; exclusive licensee American Association for the Advancement of Science. Distributed under a Creative Commons Attribution NonCommercial License 4.0 (CC BY-NC).

Originally published at:

<http://doi.org/10.1126/sciadv.1501924>

PERMISSIONS

<http://creativecommons.org/licenses/by-nc/4.0/>



Attribution-NonCommercial 4.0 International (CC BY-NC 4.0)

This is a human-readable summary of (and not a substitute for) the [license](#). [Disclaimer](#).

You are free to:

Share — copy and redistribute the material in any medium or format

Adapt — remix, transform, and build upon the material

The licensor cannot revoke these freedoms as long as you follow the license terms.

Under the following terms:



Attribution — You must give [appropriate credit](#), provide a link to the license, and [indicate if changes were made](#). You may do so in any reasonable manner, but not in any way that suggests the licensor endorses you or your use.



NonCommercial — You may not use the material for [commercial purposes](#).

No additional restrictions — You may not apply legal terms or [technological measures](#) that legally restrict others from doing anything the license permits.

27 June, 2017

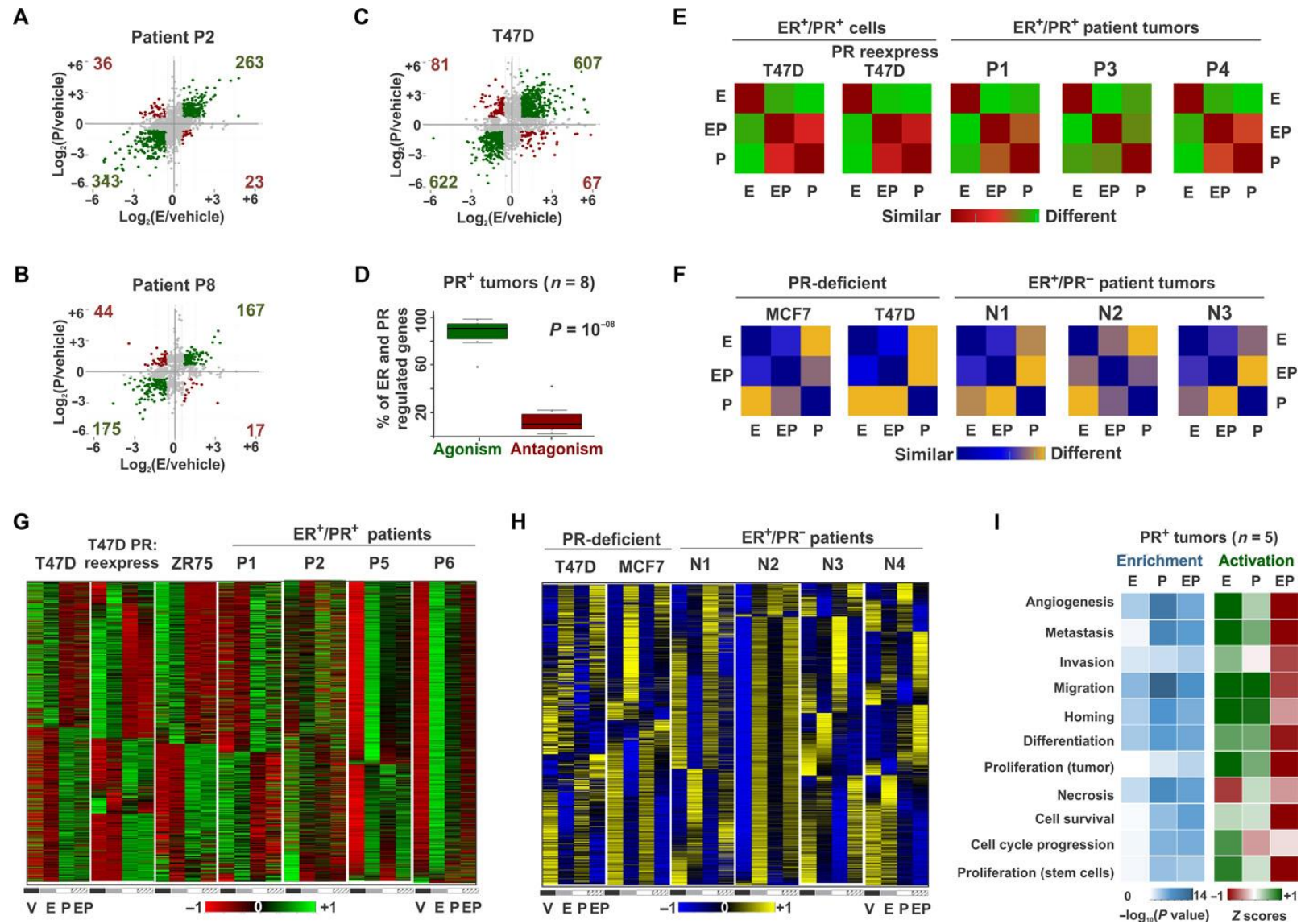
<http://hdl.handle.net/2440/105536>

Genomic agonism and phenotypic antagonism between estrogen and progesterone receptors in breast cancer

by Hari Singhal, Marianne E. Greene, Gerard Tarulli, Allison L. Zarnke, Ryan J. Bourgo, Muriel Laine, Ya-Fang Chang, Shihong Ma, Anna G. Dembo, Ganesh V. Raj, Theresa E. Hickey, Wayne D. Tilley, and Geoffrey L. Greene

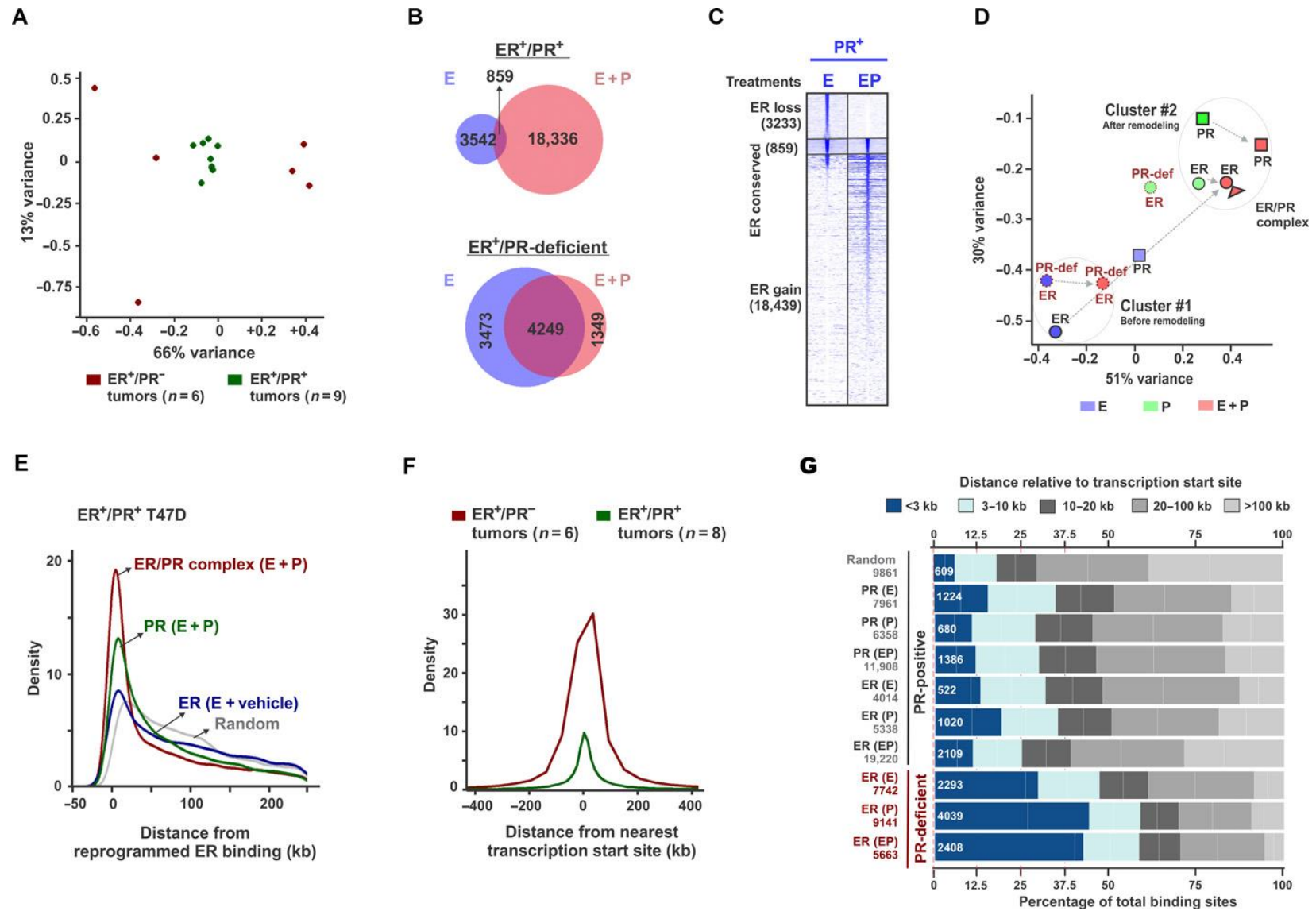
Science
Volume 2(6):e1501924
June 24, 2016

Fig. 1 Genomic agonism and phenotypic antagonism between ER and PR in breast cancer.



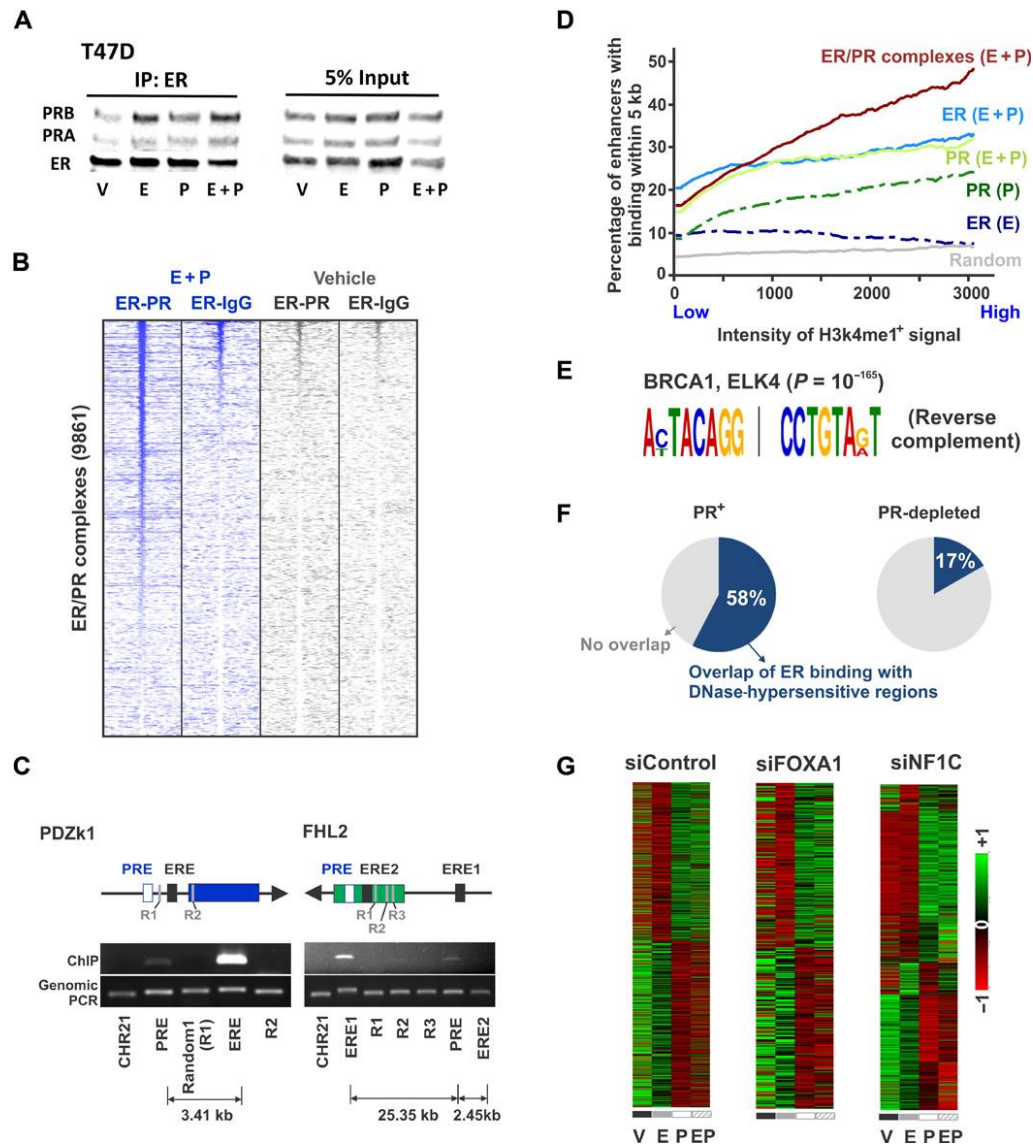
Hari Singhal et al. Sci Adv 2016;2:e1501924

Fig. 2 PR redirects ER binding to sites correlated with the binding of PR and ER/PR complexes.



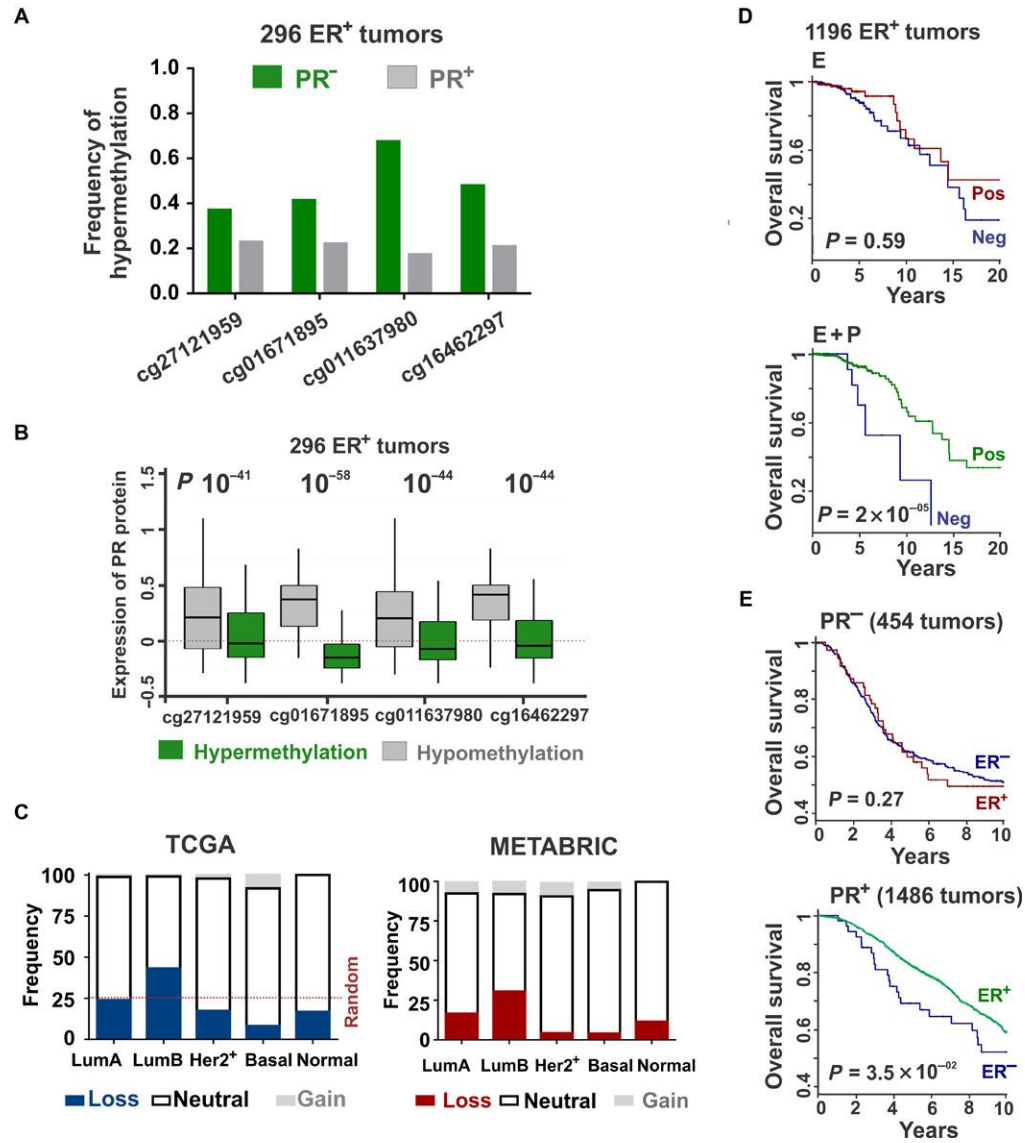
Hari Singhal et al. *Sci Adv* 2016;2:e1501924

Fig. 3 Progesterin stimulation remodels nucleosomes to redirect ER binding to enhancers and binding sites enriched for BRCA1.



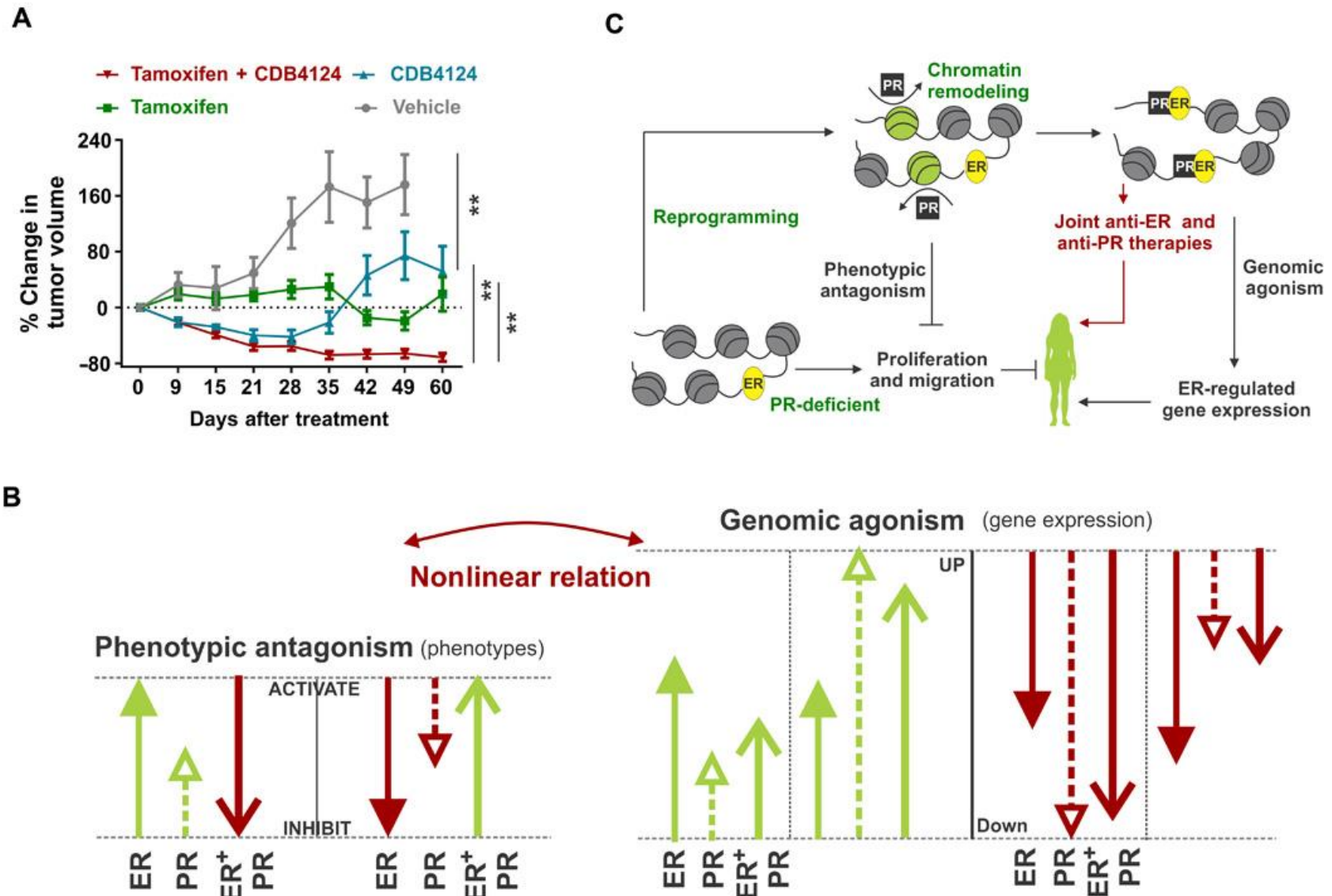
Hari Singhal et al. Sci Adv 2016;2:e1501924

Fig. 4 Presence and activity of PR contribute to the prognostic value of ER.



Hari Singhal et al. Sci Adv 2016;2:e1501924

Fig. 5 Cytotoxic tumor regression on combination therapy with tamoxifen and PR antagonist CDB4124.



Hari Singhal et al. *Sci Adv* 2016;2:e1501924