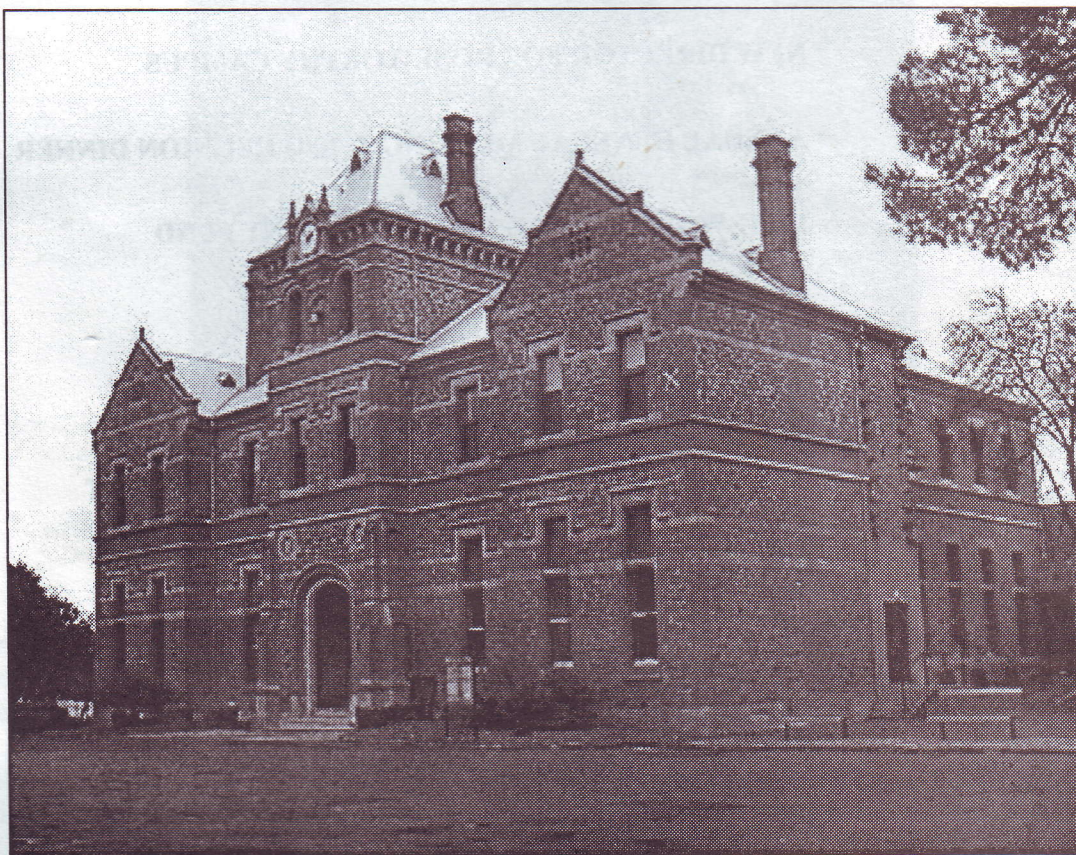




Roseworthy Old Collegians Association Inc.

ROCA DIGEST

Print Post Approved PP539022/7



Univ. of Adelaide ROSEWORTHY CAMPUS LIBRARY
Spec. Coll. P 378.942 R0669

SPRING 2003

25 MAY 2005 H+

In 1993 he returned to biomedical research as Director of Research in the R & D Division of CSL Limited, Australia's largest developer, manufacturer and marketer of cellular, human, biological and veterinary products. He was responsible for identifying and assessing potential candidates for vaccine development, including vaccines.

Continued next page

TABLE OF CONTENTS

PAGE	
1	AWARD OF MERIT
2	COMMITTEE
3	1952 GRADUATES
5	CAMPUS NEWS
6	NEW DIRECTOR FOR ROSEWORTHY CAMPUS
	ANNUAL GENERAL MEETING & 2003 REUNION DINNER
7	ROSEWORTHY CAMPUS AND STUDENT FUND
8	OBITUARIES
	POEM --- "Taking Cows to the North Paddock"
9	RULES GOVERNING THE ROCA AWARD OF MERIT
	ROCA MEMBERSHIP
	DIGEST FREQUENCY
10	ROCA STUDENT AWARDS
11	THE GRADUATING CLASS OF '56
13	AWARD OF MERIT NOMINATIONS -- 2004
14	MISSING ADDRESSES
16	RECORDS UPDATE & MEMBERSHIP APPLICATION
	ROCA COMMITTEE -- NOMINATION FORM
17	GOLF DAY -- 2003

2002 ROCA AWARD OF MERIT
Dr Graham Mitchell
AO RDA BVSc FACVSc PhD FTSE FAA



**Graham Mitchell receiving the 2002 Award of Merit from
 ROCA President, Ray Taylor.**

The forty second ROCA Award of Merit to a notable Old Collegian, who has provided meritorious and outstanding service to Agriculture, Roseworthy Campus, ROCA and the Community, was presented at the 2002 Reunion Dinner. The recipient was **Dr Graham Mitchell AO RDA BVSc FACVSc PhD FTSE FAA.**

Originally from Crystal Brook, Graham graduated from Roseworthy with Second Class Honours and a high distinction in Dairying. This was followed by the achievement of excellent academic results at Adelaide and Sydney Universities, from which he graduated in Veterinary Science.

At the Walter and Eliza Hall Institute of Medical Research (WEHI) he made discoveries in cellular immunology and obtained a PhD in 1969. After post-doctoral experience in California (Stanford), England (National Institute for Medical Research, Mill Hill) and Switzerland (Basel Institute for Immunology) he returned to Australia in 1973 and established a new program in the immunology of parasitism at WEHI. This program became a major component of the global effort to develop new tools for the control of parasitic diseases, and of the 'biotechnology revolution'. He was instrumental in establishing a long term program on the disease schistosomiasis in the Philippines.

In 1990 Graham was appointed Director of the historic and prestigious Royal Melbourne Zoological Gardens where he introduced a number of new initiatives in local and regional conservation.

In 1993 he returned to biomedical research as Director of Research in the R & D Division of CSL Limited, Australia's largest developer, manufacturer and marketer of ethical human biologicals and veterinary products. He was responsible for identifying and assessing new opportunities for CSL, nurturing external research collaborations of the company, and the research component of the development of new products, including vaccines.

Continued next page.....

.....Award of Merit continued

Graham is recognised as one of Australia's leading biological scientists. His expertise extends over a wide range of science and technology. He has detailed knowledge of the academia-industry interface, has worked in many overseas countries and been involved with the World Health Organisation for many years. He is an author of more than 350 publications, has received numerous awards for scientific achievements and, in 1993, was appointed an Officer in the Order of Australia for services to science, in particular immunoparasitology.

Graham is the Principal Advisor in Science, Engineering and Technology to the Victorian Government. In another government role the Principals of Foursight Associates Pty Ltd, including Graham, jointly act as Chief Scientist for the Department of Natural Resources and Environment. He is a non-executive director of Peptech Ltd and AMBRI Pty Ltd. He is involved with several Cooperative Research Centres and is Professor Associate of the University of Melbourne.

Graham is married with two children and has interests in Australian flora and fauna. He has been described as "the complete man", who enjoyed his work, was respected by people around him, excelled in various sports and continues to make a significant contribution to his community, and to agriculture in Australia and beyond.

Graham's acceptance address to the 2002 Reunion Dinner confirmed that he is an outstanding and worthy recipient of the ROCA Award of Merit.

R.O.C.A. COMMITTEE – 2002/2003

President	Wilf Bowen	Eyre Peninsula Representative	Peter Dunn
Immediate Past President	Ray Taylor	Public Officer [Appointed]	Bardy McFarlane
Vice President	Joe Grieve	Ordinary Member	Dale Manson
Secretary/Faculty Rep.	Darren Koopman	Ordinary Member	Harry Stephen
Treasurer	David Cooper	Ordinary Member	Bob Fawcett
New Graduate	Ben Fleet	Ordinary Member	Mark Seeliger

The make-up of the Committee is defined by Clause 7.3 of the ROCA Constitution, which is as follows:-

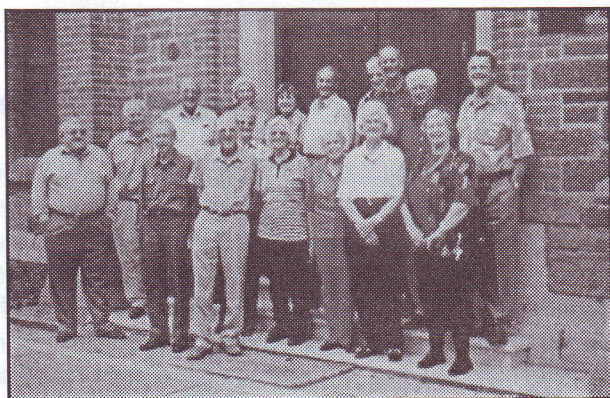
- President;
- Immediate Past President;
- Vice President;
- Secretary;
- Treasurer;
- The Campus Director;
- One ordinary member who shall be from the classes last graduated;
- One ordinary member who left the Campus more than one (1) and less than ten (10) years ago;
- One (1) Branch delegate from each properly constituted branch of the Association;
- One (1) current student resident at the Campus, nominated by the Campus Director, in consultation with the resident students;
- Four (4) other ordinary Members.

Nominations are open for all positions, except those of Immediate Past President, Faculty Representative and Public Officer. Please use the **Nomination Form on Page 16** of this Digest, and send to:-

The Secretary, R.O.C.A., PO Box 503, KENT TOWN, SA, 5071.

Nominations already received are:-

President	Wilf Bowen
Vice President	Mark Seeliger
Secretary	Darren Koopman
Treasurer	David Cooper
1 – 10 Year Graduate	Ben Fleet
Ordinary Members	Dale Manson, Harry Stephen



THE R.O.C.A DINNER 2003 - 50 YEAR GROUP

Having just left Roseworthy some 50 years ago a number of our year attended our first Old Scholars Dinner and were suitably impressed by an address by the late Elliot Day .He spoke on the achievements of the College, its graduates of 1902, and the contribution of RAC graduates to agriculture, the wine industry and the country in general.

We were not only interested at the time in his dissertation but also in the fact that anyone could live that long! Suddenly in 2002 we found that apart from a few notable and sadly missed members we had not only survived 50 years but had also succeeded in a multitude of diverse occupations spread throughout Australia and overseas.

The organising efforts of Ray Taylor, Rex Anderson and David Tuckwell were rewarded on the night by the successful muster of more than three-quarters of our original number at the Glenelg Golf Club. Despite thinning and receding hairlines, and girth lines that were neither, there was little confusion in recognising the faces that had become so familiar in what many described as the most formative and some of the happiest years of their lives.

It seemed, within a few minutes of joining for pre-dinner drinks, that the intervening years might not have existed as former students, many of whom had not seen each other since graduation day, introduced wives, discussed families, careers and eventual retirement and reminisced about those now much appreciated years of 49-52.

There was much to be remembered – we were fortunate in attending in the period of changeover from Dr. Callaghan, who believed that the Clydesdale would never be replaced on the farm as the primary power source, to the new administration who had provided two new WD9 tractors for evaluation. We still had the joy of handling 8 horse teams or mastering the intricate mechanics of the knotter on an antique binder now blended with the art of firing up a Lanz Bulldog on a cold morning or adjusting the packer arm on the new baler.

This was the time to remember our first year of roundups and initiation, of strict deference to seniors, of the steeplechase and football and sporting teams. A social life highlighted by the College Ball with usually a frantic search for partners for the less fortunate unattached, and weekends in town for the party round, had to be balanced with a need to show results in both practical and theoretical exams at the appropriate time. A few fell by the wayside as a result of this. Anyone with time on their hands could join in the fun of Gore's Army on a weekend bivouac with the Staghounds and White A.P.C.s of the 3/9th. Mounted Rifles. [see *Obits P 8*] There were memories of petrol ration tickets and a very limited supply of Capstan Blue, Log Cabin tobacco or for the very fortunate a carton of Craven A's – all very tradable in those days of austerity and the severe penalty for possession of alcohol on the College ground are in stark contrast to the liberal conditions which exist today.

Thanks to an excellent booklet produced by David Tuckwell much of the normal introduction of members of the 50- year group was shortened and apart from minor confusion on seating arrangements the dinner could only be regarded as most successful.

High on the agenda for the evening was the announcement of the Order of Merit for 2002 to Dr. Graham Mitchell for his work on the thymus. His acceptance speech was most entertaining and stressed the value of his time at RAC in both his work and his life in general and mirrored the feeling of our year that the three years we had spent at the College had been a profound influence on our later lives.

SATURDAY ON TOUR [50 year group]

Some of the more hardy survivors gathered on Saturday morning for bus trip to the college and lunch at Orlando's Jacobs Creek Restaurant.

It was impossible not to remember during the drive to Gawler through housing and industrial estates, those days when paddocks were covered not by houses but by some of the best producing hay crops in the state.

Arriving at the front of the main building it appeared as though little had changed since 1949 when we first arrived. This impression rapidly changed once we entered – the old dining room and common room had merged into an eatery capable of feeding the some nine hundred bodies that pass through the Campus each year. The old building where, at some stage, most of us had slept, eaten, and even attended Sunday Chapel in the common room, was showing signs of more than a century of use and was in urgent need of repair. This, hopefully, will occur before the installation of the recently donated clock, which had been included in the original design but did not feature in the actual building. [Editor's Note: The clock, donated by Mr James H (Jim) Newland, was installed on 12th March 2003, see Page 5]

A tour of the Corridor, now updated, but in strict contrast to the new accommodation blocks followed by a drive around the farm provided further evidence of the changed face of Roseworthy, as we knew it. The stables with the magnificent Clydesdales, some of which to the eternal shame of those responsible for the decision had been sold for a pound a head for cray-bait, were replaced by the latest in seeding and harvesting gear.

A few old treasures remain, most of them to be found in the extensive museum, but it was still easy to visualise the farm, as we had known it in the 50's. The names of instructors and farmhands were recalled. Daley, Whimpress, Oscar from the stables, Don Ledo, Ted George and Ted Lehmann had all had some part in our practical education.

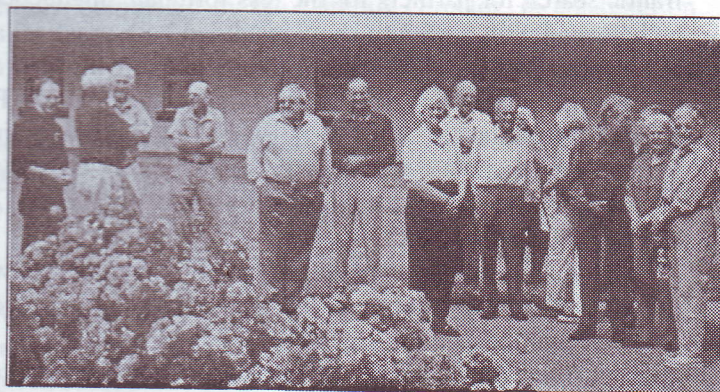
Much has changed – The vineyards and the winery, once flourishing and providing the base for the establishment of Australia as a major player in the world wine scene have disappeared. The only horses on the grounds were residents for the day only, as the equestrians took over the oval.

It is regrettable that there is a danger of new brooms sweeping clean eventually eliminating the heritage icons which characterised the College for over 120 years in exchange for a no doubt much more scientific approach to chosen subjects. The spirit of any institution lies largely in its traditions and history and the camaraderie, which has been an integral part of college life, can easily disappear as the college structure is dismantled or translocated.

Our thanks to Professor Simon Maddocks for his informative guided tour.

On to Jacob's Creek for a late lunch with some excellent wines no doubt the product of some Roseworthy influence in all stages of its production.

The weekend was memorable and it is hoped in the near future to follow up with a more relaxed function with more time to reflect on past glories



Submitted by Don Story.

ROSEWORTHY CAMPUS NEWS

THE CLOCK

The main building at the University of Adelaide's historic Roseworthy Campus has a new face – a clock face, that is.

120 years after the Roseworthy building was completed, a clock has now been installed in the tower as originally planned in 1883.

Vice-Chancellor Professor James McWha officially commissioned the new clock at a ceremony at Roseworthy Campus held on Wednesday 12th March 2003.

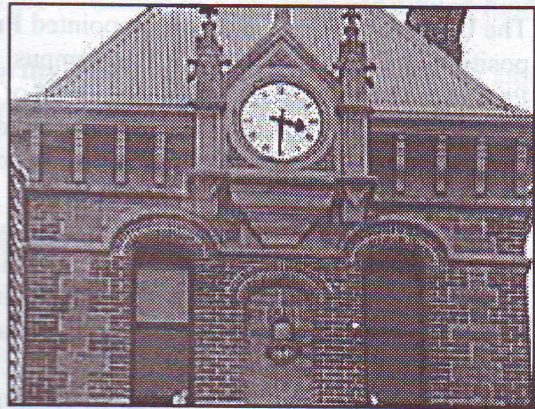
When the architects designed the main building for what was to be Australia's first agricultural college, provision was made for a clock as a prominent feature," said project manager Mr Bernard Arnold.

The clock is a Swiss precision timepiece, together with a bell, and adjusted automatically by a global positioning system connected to Greenwich Mean Time.

The installation of the clock is thanks to a gift by Roseworthy Old Collegian and retired farmer Mr James H (Jim) Newland. Jim graduated in 1935 and farmed near Naracoorte. Two of his sons also studied at the Roseworthy Agricultural College.

"On display at his home Jim has an art print of the Roseworthy building, and he was constantly reminded of the absent clock," Mr Arnold said. "Late last year he decided that he would make a gift of the clock to the University."

Unfortunately, Jim was unable to attend the commissioning due to ill-health.



Adapted from the "Adelaidean" 3/4/03

MEETINGS

The ROCA Committee has met recently with the Vice-Chancellor, Professor James McWha, who has given assurances that the status of the Roseworthy Campus will be enhanced and strongly supported in the future. Further to that he has stated that the University supports the launching of the Roseworthy Fund. Concern has been expressed that the absence of a Director since the resignation of Simon Maddocks in 2002 has restricted our communication with the Faculty of Sciences and the Campus management.

FARM MANAGEMENT

There is concern that moving the administration of the Campus farm from the Faculty of Sciences to the Division of Finance & Infrastructure reflects an inappropriate management structure.

COURSES

There have been a number of changes made to the programs offered by the Faculty of Sciences in readiness for 2004. Of these, one of the main changes has been that all courses will be offered in a three year degree plus one year honours format from 2004.

A new program in animal science the Bachelor of Science (Animal Science) will be offered for the first time in 2004, as well as a change in format for the Bachelor of Agricultural Science which will shift from its 4 year program to the 3 year format, and will be offered as a Bachelor of Science (Agricultural Science).

The main programs offered currently on the Roseworthy Campus are the Bachelor of Agriculture/ Diploma in Agricultural Production and the Bachelor of Natural Resource Management/ Diploma in Natural Resource Management.

Enrolments in the Agriculture based programs have increased slightly again this year, while enrolments in the Natural Resource Management programs has remained steady. The recent information day attracted a large crowd (approx. 250) secondary school students and parents interested in the Roseworthy based programs, which will hopefully translate to good enrolments in 2004.

NEW DIRECTOR ANNOUNCED FOR ROSEWORTHY

The University of Adelaide, has appointed **Professor Phil Hynd** to the position of Director of Roseworthy Campus.

Professor Hynd, who is also interim Head of the School of Agriculture and Wine in the Faculty of Sciences, has a distinguished career in the field of animal science and holds the position of Professor of Animal Production.

He has an international reputation for his work in combining animal nutrition with the application of genetic biotechnologies to improve animal performance. His research includes improvements to wool and hair follicles in sheep to provide better quality wool to industry and consumers.

"Phil Hynd has been instrumental in leading the discipline of animal science at the University of Adelaide into the 21st century, and we are pleased that he will apply his leadership to the Roseworthy Campus as its new Director," says the Vice-Chancellor, Professor James McWha.

"Roseworthy has become a major centre of teaching and research for the animal biotechnology and dryland agricultural industries, involving partners from industry and government. We believe Professor Hynd's scientific track record and his experience with industry and government will enable Roseworthy to enhance its already excellent national and international reputation."

Professor Hynd says he looks forward to building on Roseworthy's excellence in research and education, and community outreach.

"Roseworthy continues to draw major funding from industry and government, and the campus is among the top centres of agricultural science and education in Australia," Professor Hynd says.

"I believe our work with campus partners, rural industries and government will become stronger than ever in the near future, with Roseworthy being a leading focal point for information, communication, learning and new technologies for the rural community."



Professor Phil Hynd

*Adapted from the University of Adelaide Website
Photograph by kind permission of "The Adelaidean"*

105th ANNUAL GENERAL MEETING & 2003 REUNION DINNER

ROCA's 105th AGM and 2003 Reunion Dinner will be held on Friday November 7th, 2003, at the Glenelg Golf Club, James Melrose Drive, Novar Gardens. The AGM will commence at 6.30pm, followed by the Annual Dinner at 7.30pm. Informal interaction can take place between 7.00 and 7.30pm. When being seated for dinner, attendees are requested to respect the seating arrangements in place for the featured years.

Spouses and partners are extremely welcome to attend.

Coordinators for the year groups are:

- | | | |
|------------------|----------------|--|
| • 50 year (1953) | Jack Hill | (08 8263 9680) |
| • 40 year (1963) | Warwick Hack | (08 8532 5578) |
| • 25 year (1978) | Bob Peake | (08 8389 8839 or 0418 849 913 or peake.bob@saugov.sa.gov.au) |
| • 10 year (1993) | Tony MacKereth | (0427 862 593) |

Cost of the meal is as follows:-

Members & Partners -- \$35.00 per person
Non-Members & Partners -- \$40.00 per person
(Bookings received after 24/10/03 will **not** be accepted)

Menu will consist of:- Entrée; Main Course; Dessert; Tea, Coffee & Chocolates (Vegetarian meals available by prior arrangement)

An invitation (with tear-off slip and payment details) is enclosed with this Digest.

Further details are available from: ROCA Treasurer, Dr David Cooper. He may be contacted at work (phone: 08 8363 4371) or at home (phone: 08 8332 5982). **RSVP no later than 24th October, 2003.**

During the evening, the 2003 ROCA Award of Merit will be presented.

ROSEWORTHY FUND

For some time the ROCA Committee has been working towards the formation of a properly constituted fund to support "The College".

It has been decided that the Fund will be known as The **Roseworthy Campus and Student Fund**. The aim of the fund is to develop the physical, academic, cultural and residential facilities of the University of Adelaide's Roseworthy Campus and College.

Those nominated to administer the Fund are,

Dr Bruce Eastick	(Chair)
Mr Don Moyle	
Mr Phil Laffer	
Mr Ray Taylor	(ROCA Representative)
Dr Phil Hynd	(Faculty Representative)

The Patron is Mr Robert Champion de Crespigny, Chancellor of the University of Adelaide.

It is anticipated that negotiations will be complete in time for full details of the Fund (with a launch date) to be announced at the 2003 AGM & Reunion Dinner on 7th November 2003. Once the Fund is signed into existence the details will be published on the ROCA Website.

Contributions will be tax deductible

Extract from the Deed of Trust of the "Roseworthy Campus and Student Fund"

4 OBJECTIVES AND FUNCTIONS OF THE FUND

- 4.1 Without limiting the main aim of the Fund as set out in Clause 3, the objectives and functions of the Fund shall be all or any of the following:
- 4.1.1 to develop the physical, academic, cultural and recreational facilities on the Campus for the benefit of students and staff resident or otherwise connected with the Campus;
 - 4.1.2 to award scholarships, trusts, donations, endowments or gifts with the object of funding and encouraging study and research in any of the areas relevant to and represented on the Campus whether on the Campus or at any other post-secondary educational institution in Australia approved by the Trustees;
 - 4.1.3 to commission, promote or subsidise academic research projects into any of the academic areas represented on the Campus whether at the Campus or at any other post-secondary educational institution in Australia approved by the Trustees;
 - 4.1.4 to publish or subsidise the publication of the results of academic research projects undertaken on the Campus;
 - 4.1.5 to disseminate or subsidise the dissemination of educational materials relating to the Campus;
 - 4.1.6 by means of scholarships, grants, sponsorships, prizes or other financial assistance to support students or intending students of the University in pursuit of their studies on the Campus;
 - 4.1.7 to convene, organise and conduct seminars, lectures, classes, courses of study, presentations or public forums with the intention of furthering the objects of the Campus;
 - 4.1.8 to solicit and accept gifts, donations, trusts, endowments, bequests, subsidies, sponsorships or grants from any individual, organisation, association, estate or governmental body to assist the Fund in carrying out its functions, and to raise funds for all or any of The Fund's objectives;
 - 4.1.9 to advise and promote the activities of The Fund by any means or medium;
 - 4.1.10 to do all such other acts, matters or things as are or appear to the Trustees to be incidental or conducive to the attainment of the above objects.

OBITUARIES

It is with sadness that we record the passing of the following members of R.O.C.A.:

John Maxwell GORE
RDA 1951

Trevor William HEMER
RDA 1958

Kevin BARRY
RDA 1953

Jim JENKINS
Enrolled RAC 1950

***** NON-MEMBERS *****

John STANFORD
RDOen 1947
HM Martin Prize for Wine Tasting

David KIDD
RDA 1953

Noel LLOYD
RDA 1953

Peter O'CONNOR
RDA 1953

Doug STEEN
RDA 1953

Roger STOW
RDA 1953

Rex MOORE
Enrolled RAC 1950

TAKING COWS TO THE NORTH PADDOCK

The milking done, taking the steaming cows
To the north paddock, through early mists and gloom,
The air chill, snapping, cracking, and I cold,
Despite my coat and pulled down woollen cap.
The cows lumbering hulks, stumbling, lurching
Like old trolls looming from some miasmal swamp,

And I a plodding bog herder, lost in time.
Hooves trudge the waiting earth with muffled
grumbings,
As of hoary giants' mumblings; what they mumble
Only the earth knows, and she gives no sign.

RULES GOVERNING THE ROCA AWARD OF MERIT

1. The Roseworthy Old Collegians Association (ROCA) shall periodically award a medal to a ROCA member who has made a meritorious contribution in any field of agricultural activity and/or ROCA or community affairs. For the purpose of these rules, "agricultural activity" shall be given the widest possible meaning and will include all aspects of animal, land and natural resource management.
2. The award shall be considered annually and if in the opinion of the Selection Committee, there is no candidate of sufficient merit, no award shall be made.
3. A prospective candidate must be a ROCA member and the nomination shall be prepared and signed by two ROCA members. Nominations must be made on the Standard Form and must include the information required thereon.
4. Nominations with the supporting data must reach the ROCA Secretary by 30 June each year. The Executive shall review the nominations and have the right to reject any nomination deemed unsuitable before submitting the nominations to the Selection Committee.
5. The Executive may, at its discretion, include for consideration any candidates previously nominated.
6. The Selection Committee shall consist of five members, one from each of the following fields:
 - primary production research and/or extension;
 - public service;
 - primary production;
 - agriculture related industry and
 - the President of ROCA.
7. The Executive shall appoint to the Selection Committee, such persons who are in their opinion of sufficient standing and experience to be competent to assess the merits of candidates from any field of agricultural activity. Membership of the Selection Committee will be reviewed by the Executive each year.
8. The President of ROCA shall be the Convenor of the Selection Committee and shall only have a casting vote. Three members of the selection Committee will constitute a quorum.
9. In the event of a member of the Executive or the selection Committee being proposed as a Candidate, that person will stand down from all discussions and deliberations for that year.
10. The Selection Committee shall make its nomination to the Executive at least four weeks prior to the date of presentation of the award.
11. Members of the Executive and the Selection Committee are requested to hold the names of the candidates in strict confidence.

ROCA MEMBERSHIP

All past students and graduates of Roseworthy Agricultural College, and more recently the University of Adelaide, are automatically members of the University of Adelaide Alumni Association.

ROCA is the largest chapter of the Alumni Association with more than 1,500 members.

To be a member of ROCA you will have paid the Life Membership, which is currently \$60.00, and you will receive a copy of the ROCA Digest enclosing an invitation to the Annual Reunion Dinner. Non-members may also attend the Dinner, but are encouraged to become members and receive regular communication and a discounted meal.

If you have received a Digest this year, which has enclosed a brochure and application for membership, please seriously consider joining Roseworthy Old Collegians' Association Incorporated. ROCA is active in supporting the students, staff and training at Roseworthy Campus. We believe that the primary industries of South Australia require this valuable resource to be retained and supported.

Join up with your friends.

It's your ROCA!

ROCA DIGEST FREQUENCY

As the ROCA Digest costs between \$2,000 and \$3,000 to produce and distribute and, as ROCA income from new memberships does not even cover that figure, production of the Digest has been limited to an annual Spring edition in recent years. It is planned to enhance the use of the ROCA WebSite as a communication tool.

ROCA AWARD WINNERS

At a prize-giving function at the Waite Campus on July 31st 2003 the following graduates were presented with ROCA awards.

LUKE SIMMONS -- The Roseworthy Old Collegians Association Gold Medal and the Bank of South Australia Ltd Prize, both for the student graduating with the highest aggregate from the *Bachelor of Natural Resource Management* program.

ALISSA J LINKLATER -- The Roseworthy Old Collegians Association Old Students Cup and Prize and The Gawler Agricultural, Horticultural and Floricultural Society Silver Medal, both for the second aggregate in the *Bachelor of Agriculture* program.



· Luke Simmons and Alissa Linklater with Wilf Bowen, President of ROCA

Later in the year there will be the presentation of The Old Scholars' Trophy presented by the Roseworthy Old Collegians Association to the student at the Roseworthy Campus making the best contribution to Campus sport in a leadership role.

LETTERS FROM PRIZE RECIPIENTS

Mr Wilf Bowen
President, ROCA

Dear Mr Bowen,
I wish to thank the Roseworthy Old Collegians Association for their wonderful support of the Faculty of Science's Student Awards program. I was the proud recipient of the Roseworthy Old Collegians Gold Medal for the highest aggregate in the Bachelor of Natural Resource Management in 2002. It was an unexpected surprise to receive the award and I am really grateful for the recognition. I enjoyed my time immensely out at Roseworthy and found that the Campus offers a wonderful educational setting for the natural sciences. May I again offer my appreciation for the Roseworthy Old Collegians' continued support of students and the excellent education at Roseworthy Campus?

Yours sincerely,

Luke Simmons

Mr Wilf Bowen
President, ROCA

Dear Mr Bowen,
I am writing to express my thanks for the Old Students Cup and Prize presented by the Roseworthy Old Collegians Association for second aggregate in the Bachelor of Agriculture. It is an honour to receive this prestigious award and the generosity of ROCA is appreciated.

I am currently employed by Wesfarmers Landmark and I am certain that such an award will be significant in the furthering of my career. I feel that receiving this award is very encouraging and brings about a great feeling of achievement and fulfilment of one's aspirations.

Yours sincerely,

Alissa J Linklater

THE GRADUATING CLASS OF '56

The 1956 graduating year will not be featured for their 50-year slot at the Annual Reunion Dinner until 2006, but there came into our hands a copy of their "Occasional Newsletter # 3 - February 2003", and the publishers gave us permission to précis the information.

Here are some brief comments about some members of this group.

[As well as those names preceded by the symbol ☉, the following members of that graduating year have also died: George Faehrman and Roland Parsons.]

Grant Baldwin	BSc Adelaide 1962, MSc 1976. Various positions with Geigy & Incitec. From 1994, Private Agricultural Consultant.
Frank Brock	Property development around Tintinara. Fertiliser industry from 1969. Now Managing Director of Tectrade, supplying specialist fertiliser requirements & manufacturing 'Chemguard' chemical storage sheds.
Andrew Brown	Station work, self-employed wool-classer. SA Ag. Dept. Sheep & wool extension officer for 15 years. TAFE Rural Studies Lecturer for 20 years.
Paul Crompton	Amenity horticulture with Lasscock's Nursery. Gardens at Minda Home and Royal Adelaide Golf Club. 6 years in Plant Quarantine, before retiring on health grounds at the age of 37.
☉ Austin DeCaux	SA Dept of Lands, becoming a member of the Lands Board and the South Eastern Drainage Board after a short stint as a Rural Officer with the Commonwealth Bank. Austin died in 1980 at the age of 48.
☉ John Dufty	Veterinary Science, Sydney, post Roseworthy. Thence SA Ag. Dept., followed by CSIRO at Weribee in 1965, retiring from there in 1994. John died in 2002.
Peter Dunn	Sheep & wheat farm at Rudall EP. 1982 Member of the SA Legislative Council, President 1993. Retired from Parliament in 1997.
Allen Emerson	Land Development Executive agricultural overseer for 3 years. Fertiliser Sales extension officer for 3 years. Then Rural Officer with the Commonwealth Bank in Renmark, Naracoorte and Adelaide until retirement in 1995.
Peter Fisher	Jackeroo for 2 years at Naracoorte. Then established 'Clover Ridge' grazing property at Marcollat west of Padthaway, from which he retired to Lucindale.
Ken Foliott	Delivering groceries, jackerooing, selling real estate and Amway products, combined with nearly 40 years with ICI and Pfizer and a never-ending love affair with cars and overseas jaunts. It seems to be hereditary.
Don Golding	Teaching at Urrbrae, Cummins, Lucindale, Oakbank, Papua New Guinea & Mt. Gambier. Mt. Gambier franchise of Kip McGrath Education Centres. A successful lifelong interest in the welfare of children. Is golf less successful?
Bob Hagerstrom	SA Agriculture Dept, initially as a Soils Field Officer at Jamestown & Cleve, then Agronomy Branch as Barley Project Officer. Thence Agricultural Adviser at Mt Gambier, Cleve and Kangaroo Island where he retired in 1993.
Viv Hannaford	Added RDD to RDA, then spent 9 years in the South-East of SA and Western Victoria mainly in cheese-making. Project Officer in dairy technology at Weribee for Victorian Dept. of Ag. 1966 saw the move to Launceston for the Tasmanian Dept of Ag. As Northern Dairy Adviser. Retired, but still in Launceston.
Roger Inglis	Livestock activities at Mt Torrens and Moculta before returning to Roseworthy as Assistant Farm Superintendent and Acting Farm Manager. University of New England for B.AgEcs in 1967 and then 10 years as Regional Economist for the Riverland & Murray Mallee, followed by a similar appointment at Port Lincoln for Eyre Peninsula. SAGRIC brought a posting to Algeria and back to Port Lincoln and Adelaide before retirement in 1993.
Peter Monger	Property management in the Kimberley for 20 years, his own agency business and then Wesfarmers, before his own grazing property at Bindoon, 90 km north [cont. next page]

Peter Monger (cont.)	of Perth. This is now sold and retirement is a beach property 270 km south at Dunsborough.
John Pennells	With John Deere in Melbourne for a number of years, and then with Polygram, a division of Philips in Holland. He now lives in the UK, managing and running a business developing software systems for commerce.
Barry Pitman	Initially operated as an agricultural machinery sales representative, but graduated to a career in television and radio as weather presenter, rural film maker and in children's programs. Retired to Yankalilla and then North Maitland (NSW).
☉ Simon Pitt	Since 1957 Simon and Sandra developed grazing properties near Ouse, Tasmania, carrying 19 μ Saxon Merinos & Poll Hereford cattle. He had considerable community involvement. Simon died in 2001.
John Robinson	Work on properties in Victoria, NSW & WA, before developing his own property in the South-East of SA for 12 years. Studied sculpture and art in Italy and Europe. His 2.6m high " <i>Bonds of Friendship</i> " memorial to Australia's First-Fleet'ers was unveiled at Portsmouth in July 1980 by the Queen & another was unveiled later that year at Sydney Cove. Other works are located in Melbourne, the Canberra Olympic Village and in galleries and public buildings throughout the world.
Trevor Schubert	Initially was teaching and then Animal Health Branch of SA Agric. Dept. On Eyre Peninsula before share farming at Maltee. Back to teaching for 13 years at Birdwood, and then to Horwood-Bagshaw at Mannum. Now in semi-retirement, he combines training standard-bred horses with work for a plumbing firm in Murray Bridge.
James Sobels	Followed the RDA with RDOen (Dux) and then 4 years research with The Australian Wine Research Institute. Involved in winemaking and viticulture Walter Reynell & Sons and Quelltaler Wines Pty Ltd. He was the first to use the mechanical harvesting of grapes, at night, in the Clare Valley. He is now a part-time training provider for the wine industry, specialising in viticulture and wine appreciation.
Don Thomson	Employed by CSIRO, initially at Dickson Experimental Station and then at the Regional Administrative Office, Canberra in purchasing, administration and personnel administration. Don retired after 33 years service.
Wayne & Berkley Tiver	A year working on Yorke Peninsula was followed by contract Majestic ploughing in the Meningie area. Developed their own 4,000 acre Salt Creek scrub block into grazing on lucerne and grasses. Falling cattle prices led to development into the ' <i>Gemini Downs Holiday Centre</i> '. Wayne's son Kym & Berkley's son Mandel now run Gemini Downs.
John Treglown	Moved to Sydney in 1971 to work with a missionary organisation, and has spent 3 years in Papua New Guinea. John was widowed in 1993 and is uncertain about retirement plans.
Graham Treloar	20 years with Rossair P/L selling and servicing light aircraft and operating an aircraft charter and flying school business was followed by establishing and managing Rosmech, importing and selling road sweeping and other machinery. He is now retired but still flying & looking after pastoral interests. Veteran cars and motor cycles are a hobby.
George Woolmer	'Fruit blocking', teaching, CMF officer and secondment to Aboriginal Education as State Secondary Advisor is part of the story. Nature conservation and history interests drive such activities as the restoration of the Overland Corner Hotel for the National Trust, establishing nature reserves, heading the Riverland Branch of the Natural History Society of SA, protecting the hairy-nosed wombat and writing several books, which have all kept George busy. He has been awarded the Order of Australia. [A poem by George is on Page 8]



Roseworthy Old Collegians Association Inc.

VALE

James H (Jim) Newland

(obit. Thursday 11th September 2003, aged 90 years)

Jim Newland studied for the Diploma of Agriculture at the Roseworthy Agricultural College from 1932 to 1935. After he enrolled, the College had a turbulent time, which involved student pranks, a Principal resigning and a Royal Commission into conditions at the College. Stability was soon restored with the appointment of Dr Allan Callaghan as Principal.

Jim was active in the Social Committee, with the first staff/student dinner taking place in the College's jubilee year, 1933. Other interests were in athletics and rifle shooting. He gained places in the 100 yards handicap and was a member of the Intercollegiate Rifle Team. Jim was also a Trooper in the College's Light Horse Mounted Machine Gun Section.

After Roseworthy, Jim established a fine property at Naracoorte, where he had erected a well-designed woolshed and workshop. He was, at that time, Secretary of the local branch of the Roseworthy Old Collegians Association.

Jim and Mildred had four children; Clive, Ian, Brian and Helena. Both Clive and Ian are Roseworthy graduates from the 1950's. And, to keep the tradition going, both grandson Andrew and his wife, Kath, are graduates from a generation later.

Jim's beloved wife Mildred Florence died on 28th January 2003 aged 84.

Page 5 of this Digest reports upon Jim's gift of the clock for the Main Building at Roseworthy Campus, the lack of which had bothered him for many years. Although he was not well enough to attend the commissioning of the clock on March 12th of this year, he was pleased to be shown the video of the ceremony by Bernard Arnold of Roseworthy Campus.

The President, Committee and members of the Roseworthy Old Collegians Association Inc. offer their condolences to the family of this fine graduate and human being.

Nominations for ROCA Award of Merit -- 2004

Nominations are now being accepted for the Year 2004 ROCA Award of Merit

Since 1961, forty-two notable Old Collegians have been honoured by the Association for meritorious and outstanding service to agriculture, the Campus, ROCA or the community.

Each year the nominations are reviewed by a panel consisting of people from the highest levels of agriculture, education, industry and government.

The Award of Merit is never awarded lightly, but is regarded as the highest honour that ROCA can bestow on one of its members.

An Honour Roll is on display in the foyer of the main Building at the Roseworthy Campus, listing names of all ROCA Awards of Merit recipients.

The quality of past recipients is illustrated by the following list:

1961 Roland Hill	1962 David Riceman	1963 Len Cook	1964 W J Dawkins
1965 Frank Pearson	1966 Sir Allan Callaghan	1967 Bob Herriot	1968 Denis Muirhead
1969 Jack Reddin	1970 Ron Badman	1971 Prof Rex Butterfield	1972 Rex Krause
1973 Rex Kuchel	1974 Lex Walker	1975 Ken Pike	1976 Len Laffer
1977 Des Habel	1978 Henry Day	1979 Mark Hutton	1980 Cliff Hooper
1981 Andrew Michelmores	1982 Milton Spurling	1983 Ralph Hewitt Jones	1984 David Suter
1985 Hon Dr Bruce Eastick	1986 John Obst	1987 Robin Steed	1988 Reg French
1989 Ray Norton	1990 Tony Summers	1991 Scott Dolling	1992 Rex Anderson
1993 Bob Baker	1994 Brian Hannaford	1995 Grant Mayfield	1996 Bob Knappstein
1997 Jim Pocock	1998 Ian Young	1999 Don Moyle	2000 Grant Paech
2001 Brian Jefferies	2002 Dr Graham Mitchell		

AWARD OF MERIT -- NOMINATION FORM

Nominee Information:

Name:	
Address:	
Phone Number:	
Period at Roseworthy	
Qualification Gained	

Nominator Information

Seconder Information

Proposed by:	Seconded by:
Name:	Name:
Address:	Address:
Phone No.:	Phone No.:
Period at Roseworthy:	Period at Roseworthy:
Signature:	Signature:

Please attach supporting data outlining the nominee's career since leaving Roseworthy, including details of major published papers, achievements, academic qualifications, awards & honours received and service to industry, community and ROCA. Nominator, Seconder and Nominee must be current ROCA members.

Nominations should be sent to:-
 The President
 Roseworthy Old Collegians Association Inc.
 P.O. Box 503, Kent Town

MEMBERS FOR WHOM WE HAVE NO ADDRESSES Page 1

Mr Abdoerrahman	R G Buller	Mr C Fazekas	Mr Steve Holden
Mr D F Adams	Mr Grant K Burrows	Mr Michael D Fisher	Mr H M Honey
Mr H D Afford	Mr Terence P Byrne	Mr G P Flavel	Mr Kym B Hopkins
Mr Alick E Alcock	Mr H A Caillard	Mr D Fleming	Miss S J Hopper
Mr Nick J Allen	Mr R J Carty	Mr Richard Flockhart	A Horne
Mrs M F Alletson	Mr Richard Carty	Mr M W Ford	Mr R L Horne
Mr A Allport	Mr C P Castine	Mr Gregory C Foster	Mr Timothy J Howard
Mr Philip Ancell	Mr A P Cecil	Miss Suzanne C Franke	Mr H T Hughes
Ms K Anderson	Ms Janice S Cecil	Ms E Fraser	Mr N J Hughes
Mr Thomas W Angove	Mr Harold V Chamberlain	Mr M D Freeman	Mr D A Humphries
Mr T Anson	Mr N Chan	Mr Roland P Freund	Mr R Hunter
Mr W E Appleby	Mrs T Chaplin	Mr Jeremy S Fry	Ms G Inglis
Mr Duncan M Appleton	Mr S Chapman	Mrs R Fryar	Mr Peter E Inglis
Mr S Araya	Mr Allan H Chartier	Mr John Furst	Mr Richard J Inwood
Mr N C Armytage	Mr G Chennells	Dr Allen Gale	Ms K Isherwood
Mr George K Arnold	Ms K Chick	Mr Gregory Gallagher	Mr Laurie T Jacobs
Mr J M Arnold	Mr S N Cho	Mr A W Gay	Mrs E J James
Mr Bruce J Axford	Mr R H Clayton	Ms Kellie L Gazzara	Mr G D James
Mr G Axford	Mr Ian Cleggett	Mrs J Gellard	Mr I Japp
Mr K Ayliffe	Mr Thomas J Cleland	Mr J Gesmanis	S Jelfs
Mr P D Ayliffe	Mr Jamie E Coad	Ms V Gibson	Mr R Jenke
Mrs Marie P Baker	Mr R Coleman	Mr A G Gilbert	Mr G S Jenkins
Dr Robert M Baker	R S Coleman	Mr Nicola J Girolamo	Mrs S J Jennings
Mr Robert J Baker	Mr W D Coleman	Mr M Glass	Mr Robert L Johncock
Mr S Baker	The Honourable R Collins	Mr S Glover	Mr A M Johnson
Mr A Barret	Ms S Collins	Ms M Goehr	Ms L Johnson
Mr Robert F Barritt	Mr Andrew T Comas	Ms J Goss	L Johnston
Mr Kevin J Barry	Mr Ian L Coombs	Mr P Gough	Mr Malcolm W Jones
Mr A C Bartholomaeus	Mr D A Cooper	Mr James W Goulter	Mr Neil D Jones
Mr G Bartleet	Mr J D Cooper	Mr Mervyn L Gramp	Mr K K Kain
Mr John Bascomb	Mr Greg L Cottle	Mr B W Grant	Mr C W Kelly
Mr J W Battye	Mr C Cram	Mr S L Green	Mr Arthur W Kemp
Mr H W Bauer	Mr Geoff C Crome	Mr Robert P Greer	Mr J Kennedy
Ms Jane S Beames	Mr Justin Croser	Mr Anthony R Gregurke	Mrs Ingrid Kennerley
Mr Arthur R Beckwith	Mr Alan K Crossman	Mr U Grey-Smith	Mr A Kennett
Ms P Benson	Mr N E Cuttance	Mr Daniel Grosse	Ms J Kentish
Mr A C Benzie	Mr Craig D Darmody	Mr D J Gumbo	Mr D Kerrison
Mr Archibald C Bevis	Mrs D A Darwin	Miss E K Gurner	Mr J C Kilgour
Mr B Bicknell	Mr J Davey	Mr J D Habel	Mr John M Kirk
Mr Steve W Bird	Mr N Davies	Mr Nigel Habner	Mr Kym L Klemm
Ms N Blake	Mr Henry R Day	Mr G P Hall	Mr James R Klingberg
Ms D Boddington	Mr R P Day	Mr R Hall	Mr S R Klose
Mr M Boddington	Mr Ken L DeGaris	Mr R J Hall	Mr Timothy Knapstein
Mr T W Bond	Ms E Dodd	Mr Dale Halling	Mr V Knight
Mr B Bone	Mr Steve J Dohnt	Miss S D Harris	Ms Robyn M Knights
Mr R Bosward	Mr Tim P Dolan	Mr Tim Harris	Mr Richard Knowles
Mr David G Botting	Ms Fiona L Donald	Mr Wilfred J Harris	Mr M Koch
A E Bowering	Mr Ian M Donald	Mr I R Harvey	Ms O Kostic
Mr B J Bradshaw	Mr Manuel A Dubon	Mr Wayne A Harvey	Mr T S Krause
Mr L H Brandon	Ms D Duncombe-Wall	Mr Jeffrey G Heaslip	Mr David J Kuchel
Mr R Branson	Mr George W Dunn	Dr W R Hein	Ms Natalie J Labaj
Mr B Brasier	Mr Richard J Eastick	L J Henshaw	Dr Blair H Lake
E Bray	Mr R Eather	Mr B Hepworth	Ms H B Lane
Mr J H Bray	Ms K Edwards	Mr Anthony Herbert	Mr N Larson
Miss S N Bray	Mr P Ellis	Mr Barry R Hetherington	Mr R Lawrie
Mr T J Bridge	Mr Peter A Ellis	Ms Phillippa Hicks	Ms M A Learmonth
Mr Michael P Broad	Mr P J Emery	Mr C H Hill	Mr G M Lindon
Mr D J Brocksopp	Mrs Lynette Erkelenz	Ms K Hill	Miss Vicki M Linton
Mr David N Brookman	Miss J K Erny	Mr R J Hill	Miss Naomi J Lockhart
Mr Philip J Brown	Mr P R Evans	Mr Gregory Hocking	Mr David J Long
Ms Karleen L Buck	Ms E Fallavollita	Mr Shane G Hodgson	Mr R Lowe
Ms Lindy Bull	Mr K Favilla	Mr Edward S Hogg	Mr S Lubiana

MEMBERS FOR WHOM WE HAVE NO ADDRESSES Page 2

Mr Brian K Luck	Miss Dawn A Palmer	Mr Michael J Rump	Mrs Natalia Tikhomirov
Mr R Ludvigsen	Mr R L Panser	Mr Hilary T Ryan	Mr L Tilmouth
Ms B Luedi	Mr Stephen J Parnell	Mr Peter J Ryan	Mr Philip A Tod
Mr R G Mably	Mr David A Paton	Mr Tom M Sage	Mr B G Treloar
Mr N R MacGillivray	Mr H R Patterson	Mr W F Sanders	Mr I Trigg
Mr H Mack	Mr Gregory L Pearce	Mr Samuel J Sanderson	Mr Selestino K Tuikaba
Mr Stuart A Maitland	Mr John L Pearce	Mr Christopher L Sansoni	Mr Jules Turner
Mr G P March	Miss Patricia Pearce	Mr Gary M Saunders	Mr R Turner
Mr Theron R Marks	Mr Barry K Peck	Mr E C Savage	Ms Rose Turner
Ms Anna Marroncelli	Mr Matthew H Pellew	Mr D W Scales	Mr W R Turner
Mr S Marshall	Mr Alexander Pengilly	Mr R A Scapin	Mr Adrian Uphill
Mr Christopher Martin	Mr Ronald S Perry	Mr Peter C Schick	Mr Justin B Van Elsen
Mr Brenton R Mathews	Ms S Perry	Mr Christopher S Schiller	Mr Kendall B Varcoe
Mr G R Mavrinac	Mr Stuart C Pettigrew	Ms Nadene A Schiller	Mr Mark Vegter
Mrs E A May	Mr Anthony W Pick	Mr Leon B Schwarz	Mr Adam M Verity
Mr Philip May	Ms Susan L Pitcher-Kinnear	Mr Mark M Secker	Mr B Vickery
Dr George M Mayo	Mr L J Pitt	Mr P M Sellars	Mr R Vickery
Mr Antony E McCauley	Mr S J Pitt	Ms Cynthia A Semmens	Mr David W Walker
Ms R McDonald	Mr John Pocock	Ms L Sergeev	Ms K Waller
Mr Gavin G McEwin	Ms Jennifer R Polack	Dr Michael Sexton	Mr Donald K Walter
Mr G O McHugh	Mr H Porter	Mr Michael Shallow	Mr J Walters
Mr John McMaster	Mr R B Postle	Mr Damien J Sheehan	Mr J R Walters
Mr Benjamin A McNamara	Mr A J Potts	Mr Grant Sheehan	Mr S A Ward
Ms D McQueen	Mr W L Potts	Mr B W Shepherd	Mr W P Ward
Mr C A McRae	Mr S Powell	Mr L Shiau	Mr A Warner
Mr R N Mellor	Mr T Presser	Ms F Shipp	Mr David G Washington
Mr Brett J Menadue	Ms Sarah A Preuss	Mr Reg F Shipster	Mr Alfred H Waters
Mr D Metcalf	Mr Graham Priak	Mr Ernest W Sieber	Ms Leigh Watson
Mr Richard J Mettam	Mr Theodore P Radke	Mr Brenden N Smith	Mr Ian R Watt
Mr Kym Michael	Louise C Radman	Mr Darryl Smith	Ms S Watts
Mr S Mickan	Mr Rohan Rainbird	Ms N Smith	Mr Ian M Waugh
Mr Perminus Migwi	Ms J Ramsey	Mr Paul T Smith	Ms G Webber
Miss A R Miller	Ms J Rayner	Mr Ronald A Smith	Mr R E Welch
Mr Andrew F Miller	Miss Fiona K Reed	Mrs N Soltysiak	Mr Solomon H Weldeclassie
Ms A Mills	Mrs B J Rees	Miss Narelle L Somerset	Mr Brian C Wesley Smith
Mr Matthew R Mitchell	Mr S K Reid	Mr John B Sorrell	Mr G West
Mr R L Mitton	Mr G P Renner	Miss L M Sparrow	Mr Nicholas Wheare
Miss Natasha Mooney	Mr S Reu	Mr Neville Sprigg	Ms A Whillas
Miss H M Moore	K Reynolds	Mr A Squire	Mr Craig A White
Mr S D Moore	Miss Michelle A Rice	Mr Brian W Stacey	Mr Gregory A White
Ms Melissa Morris	Mr John A Richards	Mr Peter G Staples	Mr J White
Mr T R Mortimer	Mr A S Richardson	Mr Manfred Steiner	Ms Sheridan G White
Ms J Moss	Mr B Richardson	Ms S Stening	Mr N Whitwell
Ms A Mugford	Mr J B Richardson	Mr R F Stephen	Mr Ian Whyntie
Mr Timothy Murphy	Mr O Richardson	Mr Collings A Stephens	Mr Guy E Wiese
Mr J Murray	Mrs P Richardson	Mr Malcolm C Stopp	Mr P R Wilcox
Mr Steven Murray	Ms Christine R Ricketts	Mr J F Suiker	Mr Reginald J Wilkinson
Mr M Mutewa	Ms Elizabeth A Riley	Mr James C Sullivan	Mr Mark A Williams
Mr David R Nairn	Mr C L Ringland	Mr Anthony G Summers	Mr Stuart G Williams
Ms D Napier	Mrs Kathryn Roberts	Ms Anna K Swanepoel	Mr Anthony J Wilson
Mr Ian H Newland	Mr Richard N Roberts	Miss Nicolie Sykora	Mr David B Wilson
Ms A Newton	Mr P J Roberts-Jones	Mr Gregory I Symes	Mr Kevin Wilson
Mr Phuoc Nguyen Tan	Miss Jane A Robertson	Mr Paul A Symonds	Mr P Winter
Mr C Nichols	Mr Robert L Robertson	Mr M G Teusner	Mr John C Womersley
Mr G W Nicolson	Miss S T Rodella	Dr Barrie Thistlethwayte	Mr Pok-Man Wong
Mr Darren Niejalke	Mr Bruce S Roeger	A S Thomas	Mr Peter C Woolley
W D Nottage	Mrs Lisa M Roeger	Mr E B Thomas	Ms M Wrightson
Ms Alison M Nuske	Mr Steve L Roeger	Mr E V Thompson	Mr Christopher I Young
Mr P O'Byrne	Mr G Rohrlach	Ms J Thompson	Mr M B Youms
Mr Simon M O'Connor	Mr Theodore H Rosenblatt	Mr Brian P Thomson	Mr George Zaal
Mr E H Orchard	Mr B Rothwell	Mr Rod Thomson	Mr Dean G Zeven
Ms Katherine M O'Regan	Mr Geoffrey Rowe	Mr Lancelot B Thyer	Mr M Ziai
			Mr Darren Dutton

Please send any known addresses by e-mail to rtuckwel@penalvagold.net

RECORDS UPDATE and/or MEMBERSHIP APPLICATION

To enable R.O.C.A. to maintain accurate records of Old Collegians, we would appreciate you completing the following details:

Name:

Title..... Surname..... Given Names.....

Current Address:.....

Phone:

Home..... Work..... Fax..... Mobile.....

E-mail:..... Website.....

Occupation:.....

Position Held:..... Employer:.....

Degree(s)/Diploma(s) Obtained:..... Year(s) of Graduation:.....

.....

.....

Interests/Achievements:

.....

Spouse/Partner.....

Life Membership is \$60.00. If you're not a Life Member please return the above with your cheque for \$60.00

I am interested in helping ROCA and the Campus by:

Please tick ✓

- Providing work experience to current students
- Assisting in the sporting program
- Being part of a careers information evening
- Becoming an organiser for a Year Group Reunion
- Making a gift to the Roseworthy Fund
- Other

Please return to: Roseworthy Old Collegians Association Inc.,
P.O. Box 503,
Kent Town SA 5071

ROCA COMMITTEE -- NOMINATION FORM

We hereby nominate the following person for the committee position indicated. We affirm that the Nominee, the Nominator and the Seconder are financial members of The Roseworthy Old Collegians Association Incorporated.

NOMINEE

Full Name:Position:

Year (of first graduation from R.A.C. or Roseworthy Campus):

Signature:

Date:

NOMINATOR

Full Name:Year (as above):

Signature:

SECONDER

Full Name:Year (as above):

Signature:

Please return to: Roseworthy Old Collegians Association Inc.,
PO Box 503,
Kent Town SA 5071

2003 GOLF DAY

Roseworthy Agricultural College Old Collegians vs. Hawkesbury Agricultural College Old Scholars (S.A. Branch)

Tenth Annual Golf Day and Get Together

Barossa Valley Golf Club, Nuriootpa S.A. - Sunday 2nd November, 2003

Unfortunately Hawkesbury Old Scholars were successful again in November 2002 in winning the challenge against the Roseworthy Old Scholars team. The aim of the day is for fellowship and to enjoy ourselves.

This year we will need to field a team of at least ten [10] players from ROCA to compete, as last year's numbers were a little disappointing on the day. You are welcome to invite a friend or two to come along and we look forward to a good roll-up of Old Collegians at this function.

A barbecue lunch will be held, with the cost of the day being \$30.00 per person [lunch & golf], or \$15.00 per person [lunch & raffles].

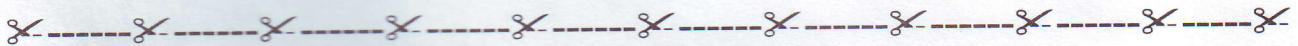
Please Note: Time is 9.30am for a 10.00am tee off.

Golf Club Phone Numbers: 08 8562 1589 or 08 8562 3766 [Pro shop].

We again seek your assistance with trophies or prizes [e.g. Logo golf balls, Wine, Caps, Shirts etc.] for presentation to the various category winners.

RAC Trophy Winners for 2002 were as follows:

Roseworthy Old Collegians Shield	-	Joe Grieve	-	40 points
Runner-up	-	Mark Seeliger	-	30 points
Third Best Score	-	Barry Sumner	-	30 points
NAGA Trophy	-	Peter Bird	-	24 points
Best First Nine	-	Joe Grieve	-	19 points
Best Second Nine	-	Mark Seeliger	-	17 points



ENTRY FORM

Please complete and return to Barry Sumner or Kel Burke no later than 27th October, 2003.

Barry Sumner,
RAC Old Collegians Golf Team,
10 Athens Terrace,
GAWLER S.A. 5118
Telephone: (08) 8522 4926

Kel Burke,
HAC Old Scholars Golf Team,
13 Rivett Road,
FULHAM GARDENS S.A. 5024
Telephone: (08) 8340 2411

Name:.....

Years at RAC/HAC:.....

Golf Handicap:.....

Club:.....

Do you need golf clubs: YES / NO (please circle)

Visitor/Guest/Partner's Names:.....

Handicap:.....

New Golfers please note: You are most welcome to join us for a round of golf even if you do not play regularly or just enjoy a stroll around the course. Flat rubber soled shoes or designated golf shoes are necessary if you intend to play golf.



