

To. d. circa

A Small Poem in F ma.

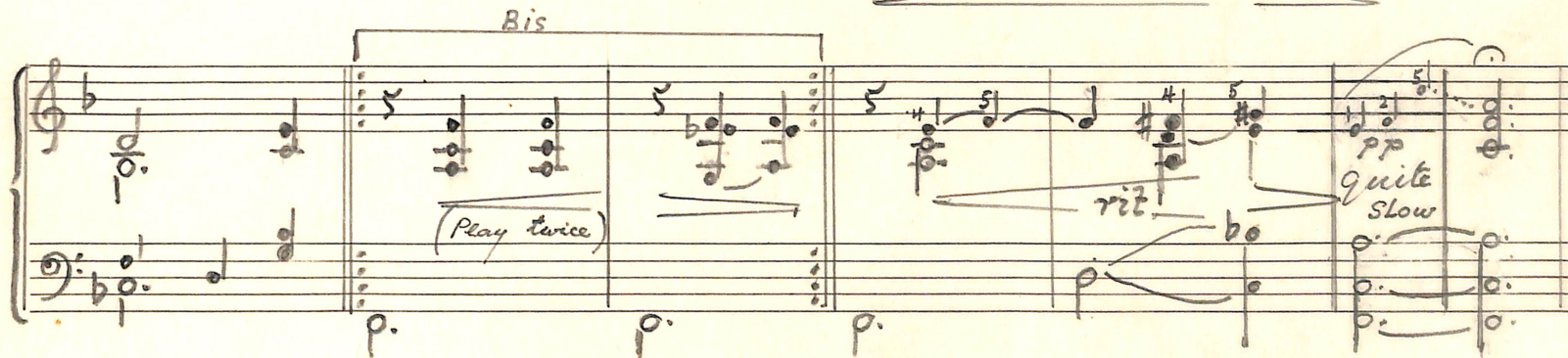
Robt Cross.

Smoothly & Espressivo mf

RH mp
LH

flowing

molto
rit



To Rolt M. Cross

70.0 circa

A Small Poem in F ma.

Robt Cross.

The first two staves of the handwritten musical score are in treble clef with a 3/4 time signature. The first staff contains a melodic line with a slur over the first four measures and a dynamic marking of *mf* (mezzo-forte) in the fifth measure. The second staff contains a bass line with a 3/4 time signature and a key signature of one flat (Bb). The notation is handwritten and includes various note values and rests.

Smoothly & Espressivo

mf

Ten blank musical staves, each consisting of five horizontal lines, are provided for writing the remainder of the piece.