

## PUBLISHED VERSION

H.E.S.S. Collaboration: H. Abdalla ... R. Blackwell ... P. De Wilt ... J. Hawkes ... J. Lau ... G. Rowell ... F. Voisin ... et. al.

**A search for very high-energy flares from the microquasars GRS 1915+105, Circinus X-1, and V4641 Sgr using contemporaneous H.E.S.S. and RXTE observations**

Astronomy and Astrophysics, 2018; 612:A10-1-A10-22

© ESO 2018. Article published by EDP Sciences

Originally published: <http://dx.doi.org/10.1051/0004-6361/201527773>

### PERMISSIONS

[https://www.aanda.org/index.php?option=com\\_content&view=article&id=863&Itemid=295](https://www.aanda.org/index.php?option=com_content&view=article&id=863&Itemid=295)

### Green Open Access

The Publisher and A&A encourage arXiv archiving or self-archiving of the final PDF file of the article exactly as published in the journal and without any period of embargo.

11 October 2018

<http://hdl.handle.net/2440/114978>

## A search for very high-energy flares from the microquasars GRS 1915+105, Circinus X-1, and V4641 Sgr using contemporaneous H.E.S.S. and RXTE observations

H.E.S.S. Collaboration: H. Abdalla<sup>1</sup>, A. Abramowski<sup>2</sup>, F. Aharonian<sup>3,4,5</sup>, F. Ait Benkhali<sup>3</sup>, A. G. Akhperjanian<sup>6,5</sup>, E. O. Angüner<sup>7</sup>, M. Arrieta<sup>15</sup>, P. Aubert<sup>24</sup>, M. Backes<sup>8</sup>, A. Balzer<sup>9</sup>, M. Barnard<sup>1</sup>, Y. Becherini<sup>10</sup>, J. Becker Tjus<sup>11</sup>, D. Berge<sup>12</sup>, S. Bernhard<sup>13</sup>, K. Bernlöhr<sup>3</sup>, E. Birsin<sup>7</sup>, R. Blackwell<sup>14</sup>, M. Böttcher<sup>1</sup>, C. Boisson<sup>15</sup>, J. Bolmont<sup>16</sup>, P. Bordas<sup>\*.3</sup>, J. Bregeon<sup>17</sup>, F. Brun<sup>18</sup>, P. Brun<sup>18</sup>, M. Bryan<sup>9</sup>, T. Bulik<sup>19</sup>, M. Capasso<sup>29</sup>, J. Carr<sup>20</sup>, S. Casanova<sup>21,3</sup>, P. M. Chadwick<sup>\*.43</sup>, N. Chakraborty<sup>3</sup>, R. Chalme-Calvet<sup>16</sup>, R. C.G. Chaves<sup>17,22</sup>, A. Chen<sup>23</sup>, J. Chevalier<sup>24</sup>, M. Chréien<sup>16</sup>, S. Colafrancesco<sup>23</sup>, G. Cologna<sup>25</sup>, B. Condon<sup>26</sup>, J. Conrad<sup>27,28</sup>, C. Couturier<sup>16</sup>, Y. Cui<sup>29</sup>, I. D. Davids<sup>1,8</sup>, B. Degrange<sup>30</sup>, C. Deil<sup>3</sup>, P. deWilt<sup>14</sup>, H. J. Dickinson<sup>\*.44</sup>, A. Djannati-Atai<sup>31</sup>, W. Domainko<sup>3</sup>, A. Donath<sup>3</sup>, L.O'C. Drury<sup>4</sup>, G. Dubus<sup>32</sup>, K. Dutton<sup>33</sup>, J. Dyks<sup>34</sup>, M. Dyrda<sup>21</sup>, T. Edwards<sup>3</sup>, K. Egberts<sup>35</sup>, P. Eger<sup>3</sup>, J.-P. Ermenwein<sup>\*.20</sup>, S. Eschbach<sup>36</sup>, C. Farnier<sup>27,10</sup>, S. Fegan<sup>30</sup>, M. V. Fernandes<sup>2</sup>, A. Fiasson<sup>24</sup>, G. Fontaine<sup>30</sup>, A. Förster<sup>3</sup>, S. Funk<sup>36</sup>, M. Füßling<sup>37</sup>, S. Gabici<sup>31</sup>, M. Gajdus<sup>7</sup>, Y. A. Gallant<sup>17</sup>, T. Garrigoux<sup>1</sup>, G. Giavitto<sup>37</sup>, B. Giebels<sup>30</sup>, J. F. Glicenstein<sup>18</sup>, D. Gottschall<sup>29</sup>, A. Goyal<sup>38</sup>, M.-H. Grondin<sup>26</sup>, M. Grudzińska<sup>19</sup>, D. Hadasch<sup>13</sup>, J. Hahn<sup>3</sup>, J. Hawkes<sup>14</sup>, G. Heinzlmann<sup>2</sup>, G. Henri<sup>32</sup>, G. Hermann<sup>3</sup>, O. Hervet<sup>15</sup>, A. Hillert<sup>3</sup>, J. A. Hinton<sup>3</sup>, W. Hofmann<sup>3</sup>, C. Hoischen<sup>35</sup>, M. Holler<sup>30</sup>, D. Horns<sup>2</sup>, A. Ivascenko<sup>1</sup>, A. Jacholkowska<sup>16</sup>, M. Jamroz<sup>38</sup>, M. Janiak<sup>34</sup>, D. Jankowsky<sup>36</sup>, F. Jankowsky<sup>25</sup>, M. Jingo<sup>23</sup>, T. Jogler<sup>36</sup>, L. Jouvin<sup>31</sup>, I. Jung-Richardt<sup>36</sup>, M. A. Kastendieck<sup>2</sup>, K. Katarzyński<sup>39</sup>, U. Katz<sup>36</sup>, D. Kerszberg<sup>16</sup>, B. Khélifi<sup>31</sup>, M. Kieffer<sup>16</sup>, J. King<sup>3</sup>, S. Klepser<sup>37</sup>, D. Klochov<sup>29</sup>, W. Kluźniak<sup>34</sup>, D. Kolitzus<sup>13</sup>, Nu. Komin<sup>23</sup>, K. Kosack<sup>18</sup>, S. Krakau<sup>11</sup>, M. Kraus<sup>36</sup>, F. Krayzel<sup>24</sup>, P. P. Krüger<sup>1</sup>, H. Laffon<sup>26</sup>, G. Lamanna<sup>24</sup>, J. Lau<sup>14</sup>, J.-P. Lees<sup>24</sup>, J. Lefaucheur<sup>31</sup>, V. Lefranc<sup>18</sup>, A. Lemière<sup>31</sup>, M. Lemoine-Goumard<sup>26</sup>, J.-P. Lenain<sup>16</sup>, E. Leser<sup>35</sup>, T. Lohse<sup>7</sup>, M. Lorentz<sup>18</sup>, R. Liu<sup>3</sup>, I. Lypova<sup>37</sup>, V. Marandon<sup>3</sup>, A. Marcowith<sup>17</sup>, C. Mariaud<sup>30</sup>, R. Marx<sup>3</sup>, G. Maurin<sup>24</sup>, N. Maxted<sup>17</sup>, M. Mayer<sup>7</sup>, P. J. Meintjes<sup>40</sup>, U. Menzler<sup>11</sup>, M. Meyer<sup>27</sup>, A. M.W. Mitchell<sup>3</sup>, R. Moderski<sup>34</sup>, M. Mohamed<sup>25</sup>, K. Morá<sup>27</sup>, E. Moulin<sup>18</sup>, T. Murach<sup>7</sup>, M. de Naurois<sup>30</sup>, F. Niederwanger<sup>13</sup>, J. Niemiec<sup>21</sup>, L. Oakes<sup>7</sup>, H. Odaka<sup>3</sup>, S. Öttl<sup>13</sup>, S. Ohm<sup>37</sup>, M. Ostrowski<sup>38</sup>, I. Oya<sup>37</sup>, M. Padovani<sup>17</sup>, M. Panter<sup>3</sup>, R. D. Parsons<sup>3</sup>, M. Paz Arribas<sup>7</sup>, N. W. Pekeur<sup>1</sup>, G. Pelletier<sup>32</sup>, P.-O. Petrucci<sup>32</sup>, B. Peyaud<sup>18</sup>, S. Pita<sup>31</sup>, H. Poon<sup>3</sup>, D. Prokhorov<sup>10</sup>, H. Prokoph<sup>10</sup>, G. Pühlhofer<sup>29</sup>, M. Punch<sup>31,10</sup>, A. Quirrenbach<sup>25</sup>, S. Raab<sup>36</sup>, A. Reimer<sup>13</sup>, O. Reimer<sup>13</sup>, M. Renaud<sup>17</sup>, R. de los Reyes<sup>3</sup>, F. Rieger<sup>3,41</sup>, C. Romoli<sup>4</sup>, S. Rosier-Lees<sup>24</sup>, G. Rowell<sup>14</sup>, B. Rudak<sup>34</sup>, C. B. Rulten<sup>15</sup>, V. Sahakian<sup>6,5</sup>, D. Salek<sup>42</sup>, D. A. Sanchez<sup>24</sup>, A. Santangelo<sup>29</sup>, M. Sasaki<sup>29</sup>, R. Schlickeiser<sup>11</sup>, F. Schüssler<sup>\*.18</sup>, A. Schulz<sup>37</sup>, U. Schwanke<sup>7</sup>, S. Schwemmer<sup>25</sup>, A. S. Seyffert<sup>1</sup>, N. Shafiq<sup>23</sup>, I. Shilon<sup>36</sup>, R. Simoni<sup>9</sup>, H. Sol<sup>15</sup>, F. Spanier<sup>1</sup>, G. Spengler<sup>27</sup>, F. Spies<sup>2</sup>, L. Stawarz<sup>38</sup>, R. Steenkamp<sup>8</sup>, C. Stegmann<sup>35,37</sup>, F. Stinzinger<sup>†.36</sup>, K. Stycz<sup>37</sup>, I. Sushch<sup>1</sup>, J.-P. Tavernet<sup>16</sup>, T. Tavernier<sup>31</sup>, A. M. Taylor<sup>4</sup>, R. Terrier<sup>31</sup>, M. Tluczykont<sup>2</sup>, C. Trichard<sup>24</sup>, R. Tuffs<sup>3</sup>, J. van der Walt<sup>1</sup>, C. van Eldik<sup>36</sup>, B. van Soelen<sup>40</sup>, G. Vasileiadis<sup>17</sup>, J. Veh<sup>36</sup>, C. Venter<sup>1</sup>, A. Viana<sup>3</sup>, P. Vincent<sup>16</sup>, J. Vink<sup>9</sup>, F. Voisin<sup>14</sup>, H. J. Völk<sup>3</sup>, T. Vuillaume<sup>24</sup>, Z. Wadiasingh<sup>1</sup>, S. J. Wagner<sup>25</sup>, P. Wagner<sup>7</sup>, R. M. Wagner<sup>27</sup>, R. White<sup>3</sup>, A. Wierzholska<sup>21</sup>, P. Willmann<sup>36</sup>, A. Wörnlein<sup>36</sup>, D. Wouters<sup>18</sup>, R. Yang<sup>3</sup>, V. Zabalza<sup>33</sup>, D. Zaborov<sup>30</sup>, M. Zacharias<sup>25</sup>, A. A. Zdziarski<sup>34</sup>, A. Zech<sup>15</sup>, F. Zefi<sup>30</sup>, A. Ziegler<sup>36</sup>, and N. Żywucka<sup>38</sup>

(Affiliations can be found after the references)

Received 17 November 2015 / Accepted 28 February 2016

### ABSTRACT

**Context.** Microquasars are potential  $\gamma$ -ray emitters. Indications of transient episodes of  $\gamma$ -ray emission were recently reported in at least two systems: Cyg X-1 and Cyg X-3. The identification of additional  $\gamma$ -ray-emitting microquasars is required to better understand how  $\gamma$ -ray emission can be produced in these systems.

**Aims.** Theoretical models have predicted very high-energy (VHE)  $\gamma$ -ray emission from microquasars during periods of transient outburst. Observations reported herein were undertaken with the objective of observing a broadband flaring event in the  $\gamma$ -ray and X-ray bands.

**Methods.** Contemporaneous observations of three microquasars, GRS 1915+105, Circinus X-1, and V4641 Sgr, were obtained using the High Energy Spectroscopic System (H.E.S.S.) telescope array and the *Rossini* X-ray Timing Explorer (RXTE) satellite. X-ray analyses for each microquasar were performed and VHE  $\gamma$ -ray upper limits from contemporaneous H.E.S.S. observations were derived.

**Results.** No significant  $\gamma$ -ray signal has been detected in any of the three systems. The integral  $\gamma$ -ray photon flux at the observational epochs is constrained to be  $I(>560 \text{ GeV}) < 7.3 \times 10^{-13} \text{ cm}^{-2} \text{ s}^{-1}$ ,  $I(>560 \text{ GeV}) < 1.2 \times 10^{-12} \text{ cm}^{-2} \text{ s}^{-1}$ , and  $I(>240 \text{ GeV}) < 4.5 \times 10^{-12} \text{ cm}^{-2} \text{ s}^{-1}$  for GRS 1915+105, Circinus X-1, and V4641 Sgr, respectively.

**Conclusions.** The  $\gamma$ -ray upper limits obtained using H.E.S.S. are examined in the context of previous Cherenkov telescope observations of microquasars. The effect of intrinsic absorption is modelled for each target and found to have negligible impact on the flux of escaping  $\gamma$ -rays. When combined with the X-ray behaviour observed using RXTE, the derived results indicate that if detectable VHE  $\gamma$ -ray emission from microquasars is commonplace, then it is likely to be highly transient.

**Key words.** gamma rays: general – X-rays: binaries – X-rays: individuals: GRS 1915+105 – X-rays: individuals: Circinus X-1 – X-rays: individuals: V4641 Sgr

\* Corresponding authors: H.E.S.S. Collaboration, e-mail: [contact.hess@hess-experiment.eu](mailto:contact.hess@hess-experiment.eu)

† Deceased.

## 1. Introduction

Microquasars are X-ray binaries that exhibit spatially resolved, extended radio emission. The nomenclature is motivated by a structural similarity with the quasar family of active galactic nuclei (AGN). Both object classes are believed to comprise a compact central object embedded in a flow of accreting material, and both exhibit relativistic, collimated jets. In the current paradigm, both microquasars and AGN derive their power from the gravitational potential energy that is liberated as ambient matter falls onto the compact object. Notwithstanding their morphological resemblance, microquasars and radio-loud AGN represent complementary examples of astrophysical jet production on dramatically disparate spatial and temporal scales. Indeed, conditions of accretion and mass provision that pertain to the supermassive ( $10^6 M_{\odot} \lesssim M_{\text{BH}} \lesssim 10^9 M_{\odot}$ ) black holes that power AGN and of the stellar-mass compact primaries of microquasars are markedly different. In the latter, a companion star (or donor) provides the reservoir of matter for accretion onto a compact stellar remnant (or primary), which can be either a neutron star or a black hole. Partial dissipation of the resultant power output occurs in a disk of material surrounding the primary, producing the thermal and non-thermal X-ray emission, which is characteristic of all X-ray binary systems. Microquasars are segregated on the basis of associated non-thermal radio emission, indicative of synchrotron radiation in a collimated outflow, which carries away a sizeable fraction of the accretion luminosity (Fender et al. 2004b). In AGN, superficially similar jet structures are known to be regions of particle acceleration and non-thermal photon emission. The resulting radiation spectrum can extend from radio wavelengths into the very high-energy (VHE;  $E_{\gamma} > 100 \text{ GeV}$ )  $\gamma$ -ray regime. Very high-energy  $\gamma$ -ray emission has been observed from many AGN in the blazar sub-class<sup>1</sup>, where the jet axis is aligned close to the observer line-of-sight, as well as from a few radio galaxies (e.g. M 87, Aharonian et al. 2003; Cen A, Aharonian et al. 2009; NGC 1275, Aleksić et al. 2012) and starburst galaxies (e.g. M 82, Acciari et al. 2009; NGC 253, Abramowski et al. 2012).

If similar jet production and efficient particle acceleration mechanisms operate in microquasars and AGNs, this might imply that the former object class are plausible sources of detectable VHE  $\gamma$ -ray emission as well, assuming that appropriate environmental conditions prevail. The primarily relevant environmental conditions include the density of nearby hadronic material, which provides scattering targets for inelastic proton scattering interactions; these interactions produce pions that produce  $\gamma$ -rays when they subsequently decay. The ambient magnetic field strength is also important and influences the rate at which electrons lose energy via synchrotron radiation. Synchrotron photons contribute to the reservoir of soft photons that are available for inverse Compton (IC) up-scattering into the VHE  $\gamma$ -ray regime. The argument for phenomenological parity between AGN and microquasars, possibly related to their structural resemblance, has been strengthened in recent years as the spectral properties of both radio and X-ray emission are remarkably similar for both stellar mass and supermassive black holes. In recent years these similarities led to the postulation of a so-called fundamental plane, which describes a three-dimensional, phenomenological correlation between the radio (5 GHz) and X-ray (2–10 keV) luminosities and the black hole mass (Merloni et al. 2003; Falcke et al. 2004). However, the fundamental plane does not appear to extend into the TeV band. To date, only one well-established microquasar has been observed to emit in the

VHE  $\gamma$ -ray regime. This is the Galactic black hole Cygnus X-1, which was marginally detected (at the  $\sim 4\sigma$  level) by the MAGIC telescope immediately prior to a 2–50 keV X-ray flare observed by the INTEGRAL satellite, the *Swift* Burst Alert Telescope (BAT), and the RXTE All-Sky Monitor (ASM; Albert et al. 2007; Malzac et al. 2008). Laurent et al. (2011) recently identified linear polarized soft  $\gamma$ -ray emission from Cygnus X-1 (see also Jourdain et al. 2012), thereby locating the emitter within the jets and identifying their capacity to accelerate particles to high energies (see however Romero et al. 2014). Further motivation for observing microquasars in the VHE band arises from the recent identification of the high-mass microquasar Cygnus X-3 as a transient high-energy (HE;  $100 \text{ MeV} < E_{\gamma} < 100 \text{ GeV}$ )  $\gamma$ -ray source by the *Fermi* (Abdo et al. 2009) and AGILE (Tavani et al. 2009) satellites. The identification of a periodic modulation of the HE signal is consistent with the orbital frequency of Cygnus X-3 and provides compelling evidence for effective acceleration of charged particles to GeV energies within the binary system (Abdo et al. 2009). Based on evidence from subsequent reobservations, the HE  $\gamma$ -ray flux from Cygnus X-3 appears to be correlated with transitions observed in X-rays in and out of the so-called ultra-soft state, which exhibits bright soft X-ray emission and low fluxes in hard X-rays and is typically associated with contemporaneous radio flaring activity (e.g. Corbel et al. 2012). Unfortunately, repeated observations of Cygnus X-3 using the MAGIC telescope did not yield a significant detection (Aleksić et al. 2010), despite the inclusion of data that were obtained simultaneously with the periods of enhanced HE emission detected using *Fermi*. However, the intense optical and ultraviolet radiation fields produced by the Wolf-Rayet companion star in Cygnus X-3 imply a large optical depth for VHE  $\gamma$ -rays due to absorption via  $e^+e^-$  pair production (e.g. Bednarek 2010; Zdziarski et al. 2012). Accordingly, particle acceleration mechanisms akin to those operating in Cygnus X-3 may yield detectable VHE  $\gamma$ -ray fluxes in systems with fainter or cooler donors.

Mechanisms for  $\gamma$ -ray production in microquasars have been widely investigated, resulting in numerous hadronic (see e.g. Romero et al. 2003) and leptonic (see e.g. Atoyan & Aharonian 1999; Georganopoulos et al. 2002; Bosch-Ramon et al. 2006; Dermer & Böttcher 2006; Dubus et al. 2010) models, describing the expected fluxes and spectra of microquasars in the GeV–TeV band. In both scenarios, a highly energetic population of the relevant particles is required and, consequently, emission scenarios generally localize the radiating region within the jet structures of the microquasar. Leptonic models rely upon IC scattering of photons from the primary star in the binary system or photons produced through synchrotron emission along the jet to produce VHE  $\gamma$ -ray emission. In this latter scenario, they closely resemble models of extragalactic jets (Königl 1981; Ghisellini & Maraschi 1989), but typically invoke internal magnetic fields that are stronger by factors  $\sim 1000$ . Consideration of hadronic models is motivated by the detection of Doppler-shifted emission lines associated with the jets of the microquasar SS 433 (e.g. Margon 1984), indicating that at least some microquasar jets comprise a significant hadronic component. Models of VHE  $\gamma$ -ray production by hadronic particles generally invoke electromagnetic cascades initiated by both neutral and charged pion decays (Romero et al. 2003; Aharonian & Atoyan 1996; Romero et al. 2005).

Electron-positron pair production,  $\gamma\gamma \rightarrow e^+e^-$  can absorb VHE  $\gamma$ -rays. In the case of 1 TeV  $\gamma$ -rays, the cross section for this process is maximised for ultraviolet target photons ( $E_{\text{ph}} \sim 10 \text{ eV}$ ), where its value may be approximated in

<sup>1</sup> <http://tevcat.uchicago.edu/>

terms of the Thomson cross section as  $\sigma_{\gamma\gamma} \approx \sigma_T/5$  (e.g. Gould & Schröder 1967). In high-mass systems, the companion star is expected to produce a dense field of these target photons to interact with the  $\gamma$ -rays (e.g. Protheroe & Stanev 1987; Moskalenko 1995; Böttcher & Dermer 2005; Dubus 2006). This process can be very significant and probably contributes to the observed orbital modulation in the VHE  $\gamma$ -ray flux from LS 5039 (Aharonian et al. 2006c). In contrast, the ultraviolet spectrum of low-mass microquasars is likely dominated by the reprocessing of X-ray emission in the cool outer accretion flow (van Paradijs & McClintock 1994; Gierliński et al. 2009), although jet emission might also be significant (Russell et al. 2006). Regardless of their origin, the observed optical and ultraviolet luminosities of low-mass X-ray binaries (LMXBs) are generally orders of magnitude lower than those of high-mass systems (Russell et al. 2006), and the likelihood of strong  $\gamma$ -ray absorption is correspondingly reduced.

However, microquasars may only become visible in the TeV band during powerful flaring events. These transient outbursts, characterised by the ejection of discrete superluminal plasma clouds, are usually observed at the transition between low- and high-luminosity X-ray states (Fender et al. 2004b). Monitoring black-hole X-ray binaries with radio telescopes and X-ray satellites operating in the last decade enabled a classification scheme of such events to be established (Homan & Belloni 2005). Hardness-intensity diagrams (HIDs) plot the source X-ray intensity against X-ray colour (or hardness) and have subsequently been extensively used to study the spectral evolution of black-hole outbursts. At the transition from the so-called low-hard state to the high-soft states through the hard-to-soft intermediate states, the steady jet associated with the low-hard state is disrupted. These transient ejections, produced once the accretion disk collapses inwards, are more relativistic than the steady low-hard jets (Fender et al. 2004b). Internal shocks can develop in the outflow, possibly accelerating particles that subsequently give rise to radio optically thin flares observed from black-hole systems; this phenomenological description is also extensible to neutron stars, although in that case jet radio power is lower by a factor 5–30 (Migliari & Fender 2006).

Outburst episodes have also been observed in cases in which the source remained in the hard state without transition to the soft state (Homan & Belloni 2005). The detection (at the  $\sim 4\sigma$  level) by the MAGIC telescope of the high-mass, black-hole binary Cygnus X-1 took place during an enhanced 2–50 keV flux low-hard state as observed with the INTEGRAL satellite, the *Swift* BAT, and the RXTE ASM (Malzac et al. 2008). However, although the source X-ray spectrum remained unchanged throughout the TeV flare, such a bright hard state was unusually long when compared with previous observations of the source.

Here we report on contemporaneous observations with H.E.S.S. and RXTE of the three microquasars V4641 Sgr, GRS 1915+105, and Circinus X-1. Information on the targets, the H.E.S.S. and RXTE observations, and the corresponding trigger conditions are detailed in Sect. 2. Analysis results are reported in Sect. 3 and discussed in Sect. 4. In the appendix, detailed information on the X-ray analysis is reported, which in particular includes HIDs corresponding to the time of observations for the three studied sources.

## 2. Targets and observations

### 2.1. Observations

The H.E.S.S. Imaging Atmospheric Cherenkov Telescope (IACT) array is situated on the Khomas Highland plateau of

**Table 1.** Observationally established parameters of the target microquasars.

	GRS 1915+105	Circinus X-1	V4641 Sgr
$P_{\text{orb}}$ [d]	$33.85 \pm 0.16$ (1)	16.6 (2)	2.82 (3)
$M_{\star}$ [ $M_{\odot}$ ]	$0.47 \pm 0.27$ (1) $0.28 \pm 0.02$ (4)	3–10 (5)	$2.9 \pm 0.4$ (10)
$M_{\text{CO}}$ [ $M_{\odot}$ ]	$12.4^{+2.0}_{-1.8}$ (6)	$\leq 1.4$ (8)	$6.4 \pm 0.6$ (10)
$\theta_{\text{jet}}$ [°]	$60 \pm 5$ (6)	$\leq 3$ (9)	$\leq 12$ (3)
$d$ [kpc]	$8.6^{+2.0}_{-1.6}$ (6,7)	$9.4^{+0.8}_{-1.0}$ (9)	$6.2 \pm 0.7$ (10)

**Notes.**  $P_{\text{orb}}$  is the binary orbital period,  $M_{\star}$  is the mass of the companion star,  $M_{\text{CO}}$  is the compact object mass,  $\theta_{\text{jet}}$  is the inclination of the observed jet with respect to the line of sight, and  $d$  is the estimated distance to the microquasar.

**References.** (1) Steeghs et al. (2013); (2) Nicolson (2007); (3) Orosz et al. (2001); (4) Ziolkowski (2015); (5) Johnston et al. (1999); Jonker et al. (2007); (6) Reid et al. (2014); (7) Zdziarski (2014); (8) Tennant et al. (1986b); Linares et al. (2010); (9) Heinz et al. (2015); (10) MacDonald et al. (2014).

Namibia ( $23^{\circ}16'18''$  south,  $16^{\circ}30'00''$  east), at an elevation of 1800 m above sea level, and is capable of detecting a Crab-like source close to the zenith at the  $5\sigma$  level within  $<5$  min under good observational conditions (Aharonian et al. 2006a). The point source sensitivity of H.E.S.S. enables it to detect a  $2.0 \times 10^{-13} \text{ cm}^{-2} \text{ s}^{-1}$   $\gamma$ -ray flux above 1 TeV, at the  $5\sigma$  level within 25 h, which, together with a low-energy threshold ( $\sim 100$  GeV), makes H.E.S.S. an invaluable instrument for studying the VHE  $\gamma$ -ray emission from microquasars. A fifth and larger telescope (commissioned in 2013) will allow the energy threshold to be lowered and will further increase the sensitivity of the instrument. For the analysis presented here, H.E.S.S. observations were carried out using the full, original four-telescope array. Owing to the diverse morphologies of the three binary systems, unique observational trigger criteria were established for each target employing various combinations of the observed X-ray state and radio flaring activity. Details are provided in subsequent paragraphs.

The *Rossi X-ray Timing Explorer* (RXTE) was a space-based X-ray observatory launched on 30 December 30 1995 and decommissioned on 5 January 2012. The primary mission of RXTE was to provide astrophysical X-ray data with high timing resolution. This observatory occupied a circular low-earth orbit with an orbital period of  $\sim 90$  min and carried three separate X-ray telescopes. The Proportional Counter Array (PCA) on board RXTE comprised five copointing xenon and propane Proportional Counter Units (PCUs), which were nominally sensitive in the energy range  $\sim 2$ –60 keV with an energy resolution of  $<18\%$  at 6 keV (Zhang et al. 1993). For studies of rapidly varying sources like X-ray binaries, the PCA timing resolution of  $\sim 1 \mu\text{s}$  can prove invaluable. However, rapid timing measurements also require a bright source to provide sufficient counting statistics within such short time bins. The High Energy X-ray-Timing Experiment (HEXTE) comprised two independent clusters of four phoswich scintillation detectors, which were sensitive to photons in the  $\sim 12$ –250 keV energy range and had an energy resolution of  $\sim 9$  keV at 60 keV. The maximum timing resolution of HEXTE was  $\sim 8 \mu\text{s}$ . The All-Sky Monitor (ASM) was a wide field-of-view instrument that monitored  $\sim 80\%$  of the sky over the course of each  $\sim 90$  min orbit. This instrument consisted of three identical scanning shadow cameras and was designed to provide near-continuous monitoring of bright X-ray sources. Nominally, the ASM was sensitive in the energy range

from 2–10 keV and had a rectangular field of view spanning  $110^\circ \times 12^\circ$ .

Contemporaneous X-ray (RXTE) and VHE  $\gamma$ -ray (H.E.S.S.) observations were performed at the epochs listed in Table 2. In the following, we briefly review the observational characteristics of the target microquasars, GRS 1915+105, Circinus X-1, and V4641 Sgr. Established system parameters that characterise the three target microquasars are collated in Table 1.

## 2.2. GRS 1915+105

GRS 1915+105 is a dynamically established black-hole binary first identified by the WATCH all-sky monitor on board the GRANAT satellite (Castro-Tirado et al. 1994). Observations in the optical and near-infrared using the Very Large Telescope succeeded in identifying the stellar companion as a low-mass KM III giant (Greiner et al. 2001). GRS 1915+105 gained a measure of celebrity as the prototype Galactic superluminal source (Mirabel & Rodríguez 1994).

In a detailed study of the X-ray light curves of GRS 1915+105, Belloni et al. (2000) succeeded in identifying 12 distinct variability classes, internally characterised by the duration and juxtaposition of three separate spectral states. Episodes of class  $\chi$  behaviour, belonging to state C and lasting several days, are known as plateaux and are invariably terminated by flaring activity in the radio, infrared, and X-ray bands (Fender & Belloni 2004). In contrast with the evidence for self-absorbed synchrotron radiation seen in the spectrally hard, low-luminosity state C, and often associated with continuous relativistic jets (Klein-Wolt et al. 2002), radio spectra obtained during the end-plateau flaring episodes indicate optically thin synchrotron emission (Fender et al. 1997; Eikenberry et al. 1998). Occasionally, these flaring episodes are linked to powerful discrete plasma ejections with instantaneous power output reaching  $\geq 10^{39}$  erg  $s^{-1}$  (Mirabel & Rodríguez 1994; Zdziarski 2014). Modelling the emission from these discrete relativistic ejecta, Atoyan & Aharonian (1999) showed that inverse Comptonisation of emitted synchrotron photons into the GeV–TeV regime could produce significant and persistent  $\gamma$ -ray fluxes that remain detectable for several days.

Acero et al. (2009) and Saito et al. (2009) reported VHE  $\gamma$ -ray observations of GRS 1915+105; these authors derived integral flux upper limits of  $6.1 \times 10^{-13}$  cm $^{-2}$  s $^{-1}$  above 410 GeV and  $1.17 \times 10^{-12}$  cm $^{-2}$  s $^{-1}$  above 250 GeV, respectively.

For the analysis presented here, GRS 1915+105 was observed by H.E.S.S. between 28 April and 3 May 2004 in response to an apparent decrease in the 15 GHz radio flux, which was monitored by the Ryle Telescope during a  $\sim 50$  day plateau state (Pooley 2006), as shown in Fig. A.2, in which coloured markers indicate the H.E.S.S. observation epochs. On the basis of previously observed behaviour, it was thought likely that the observed radio evolution signalled the end of the plateau state and, therefore, that flaring activity would begin within the subsequent 24 h. The RXTE observations of GRS 1915+105 comprised six individual pointings, contributing to accumulated PCA and HEXTE livetimes of 7.6 ks and 5176 s, respectively. Fifteen contemporaneous H.E.S.S. observations were obtained, constituting an overall livetime of 6.9 h.

## 2.3. Circinus X-1

Circinus X-1 (hereafter Cir X-1) has been extensively studied since its initial identification (Margon et al. 1971), reveal-

ing a somewhat confusing collection of complex observational characteristics.

Repeated observation of type I X-ray bursts (Tennant et al. 1986a,b; Linares et al. 2010) definitively identifies the compact primary in Cir X-1 as a low magnetic field ( $B \lesssim 10^{11}$  G) neutron star. Further sub-classification as a Z or atoll source (see, for example, Done et al. 2007, for an explanation of the distinction between these two classes) is not possible since Cir X-1 exhibits several confusing spectral and timing properties, subsets of which are characteristic of both source types (see e.g. Shirey et al. 1999a; Oosterbroek et al. 1995). Accordingly, established paradigms for disk-jet coupling in X-ray binaries with neutron star primaries (e.g. Migliari & Fender 2006) cannot be reliably employed.

At radio wavelengths, the jets of Cir X-1 display notable structure on arcsecond scales, appearing as a bright core with significant extension along the axial direction of the arcminute jets (Fender et al. 1998). In fact, the observed extension is rather asymmetric with a ratio of at least two between the observed fluxes of the two opposing jets. Interpreted as pure relativistic aberration, this asymmetry implies a jet velocity  $\geq 0.1c$ . Cir X-1 has also been observed to eject condensations of matter with apparently superluminal velocities  $\geq 15c$  (Fender et al. 2004a). These observations imply a physical velocity for the ejecta  $v > 0.998c$  with a maximum angle between the velocity vector and the line of sight  $\theta < 5^\circ$ . These results identify Cir X-1 as a microblazar, a Galactic, small-scale analog of the blazar class of AGN, several of which are known sources of VHE  $\gamma$ -rays.

Definitive classification of the donor star in Cir X-1 is somewhat problematic. The low apparent magnitude of the detected optical counterpart implies a dereddened luminosity consistent with a low-mass or sub-giant companion, implying that Cir X-1 is a LMXB with a high orbital eccentricity  $e \sim 0.7$ – $0.9$  (e.g. Johnston et al. 1999). Nonetheless, recent near-infrared (Clark et al. 2003) and *I*-band optical (Jonker et al. 2007) observations reveal emission features that are consistent with a mid-B supergiant, suggesting a more moderate eccentricity  $e \sim 0.45$ .

Observations of Cir X-1 in the X-ray band reveal a long-term evolution of the average source brightness. Fluxes rose monotonically from near-undetectable in the early 1970s to a peak value of  $\sim 1.5$ – $2$  Crab (1.5–10 keV) at the turn of the millennium, before returning over a period of  $\sim 4$  yr to their pre-rise levels (Parkinson et al. 2003). Various X-ray spectra, obtained during epochs of both high and low flux, display evidence of complex and variable emission and absorption processes.

A previous analysis of H.E.S.S. observations of Cir X-1 was presented by Nicholas & Rowell (2008), who derived a preliminary upper limit to the  $\gamma$ -ray flux above 1 TeV of  $1.9 \times 10^{-13}$  cm $^{-2}$  s $^{-1}$  corresponding to a detector livetime of 28 h.

The H.E.S.S. observations of Cir X-1 reported here began on 18 June 2004 and were scheduled to coincide with the periastron passage of the binary components. The previous observation of regular radio flares during this orbital interval were thought to provide a good chance of observing during a period of outburst with the associated possibility that superluminal ejections might occur. The RXTE observations of Cir X-1 comprised three individual pointings, corresponding to orbital phase intervals  $0.0486 \leq \phi \leq 0.0498$ ,  $0.1104 \leq \phi \leq 0.1112$ , and  $0.1718 \leq \phi \leq 0.1725$  (using the radio flare ephemeris of Nicolson 2007), and contributing to an accumulated PCA livetime of 2576 s. A data set comprising 12 contemporaneous H.E.S.S. observations yielded a combined livetime of 5.4 h.

**Table 2.** Observational epochs for each target microquasar.

Target	RXTE ObsId	RXTE Observations (MJD)	H.E.S.S. Observations (MJD)
GRS 1915+105	90108-01-01-00	53 123.091 → 53 123.109	53 123.067 → 53 123.150
	90108-01-02-00	53 124.074 → 53 124.094	53 124.079 → 53 124.162
	90108-01-03-00	53 125.130 → 53 125.149	53 125.083 → 53 125.148
	90108-01-04-00	53 126.114 → 53 126.129	53 126.109 → 53 126.132
	90108-01-05-00	53 127.097 → 53 127.114	53 127.106 → 53 127.165
	90108-01-06-00	53 128.150 → 53 128.165	53 128.149 → 53 128.165
Cir X-1	90124-02-01-00	53 174.749 → 53 174.761	53 174.748 → 53 174.832
	90124-02-02-00	53 175.768 → 53 175.780	53 175.735 → 53 175.822
	90124-02-03-00	53 176.781 → 53 176.793	53 176.772 → 53 176.858
V4641 Sgr	90108-03-01-00	53 193.904 → 53 193.924	Not Observed
	90108-03-02-00	53 194.887 → 53 194.908	53 194.883 → 53 194.926
	90108-03-03-00	53 195.871 → 53 195.892	53 195.890 → 53 195.931

#### 2.4. V4641 Sgr

V4641 Sgr is the optical designation of the habitually weak X-ray source SAX J1819.3-2525 (XTE J1819-254), which was independently identified using the *BeppoSAX* (in 't Zand et al. 1999) and RXTE (Markwardt et al. 1999a) satellites. Optical spectroscopic measurements (Orosz et al. 2001; Lindström et al. 2005) strongly suggest a late B- or early A-type companion with an effective temperature  $T_{\text{eff}} \approx 10\,500$  K. The mass of the compact primary,  $6.4 \pm 0.6 M_{\odot}$  (MacDonald et al. 2014), categorises V4641 Sgr as a firm black hole candidate.

V4641 Sgr is probably best known for its exhibition of rapid and violent outbursts. Perhaps the most spectacular of these events was the super-Eddington flare detected by the RXTE ASM in September 1999. The observed X-ray fluxes (2–12 keV) increased sharply, reaching  $\approx 12.2$  Crab within eight hours before fading again to below 0.1 Crab in under two hours (Revnivtsev et al. 2002). Powerful contemporaneous flares were also observed at hard X-ray (McCullough et al. 1999), optical (Stubbings & Pearce 1999), and radio (Hjellming et al. 2000) wavelengths. In fact, Very Large Array (VLA) radio observations obtained within a day of the X-ray flare resolved a bright jet-like radio structure  $\approx 0.25$  arcsec in length (Hjellming et al. 2000). Assuming the most likely hypothesis, i.e., that the ejection is coincident with some phase of the X-ray flare, proper motions in the range  $0.22 \lesssim \mu_{\text{jet}} \lesssim 1.1$  arcsec day $^{-1}$  are derived. At the minimum distance  $d = 5.5$  kpc, the implied lower limit to the apparent velocity of the ejecta is  $7c \lesssim v_{\text{min}} \lesssim 35c$ , which is comparable with the extragalactic jets seen in blazars. Indeed, the remarkably high apparent velocities imply that V4641 Sgr may be a microblazar with a relativistic jet moving close to the line of sight ( $\theta_{\text{jet}} \lesssim 12^{\circ}$ ; from Orosz et al. 2001). Subsequent, weaker broadband outbursts have also been observed, suggesting recurrent activity on a timescale  $\sim 1$ –2 yr (e.g. Hjellming 2000; Rupen et al. 2002, 2003; Swank 2004).

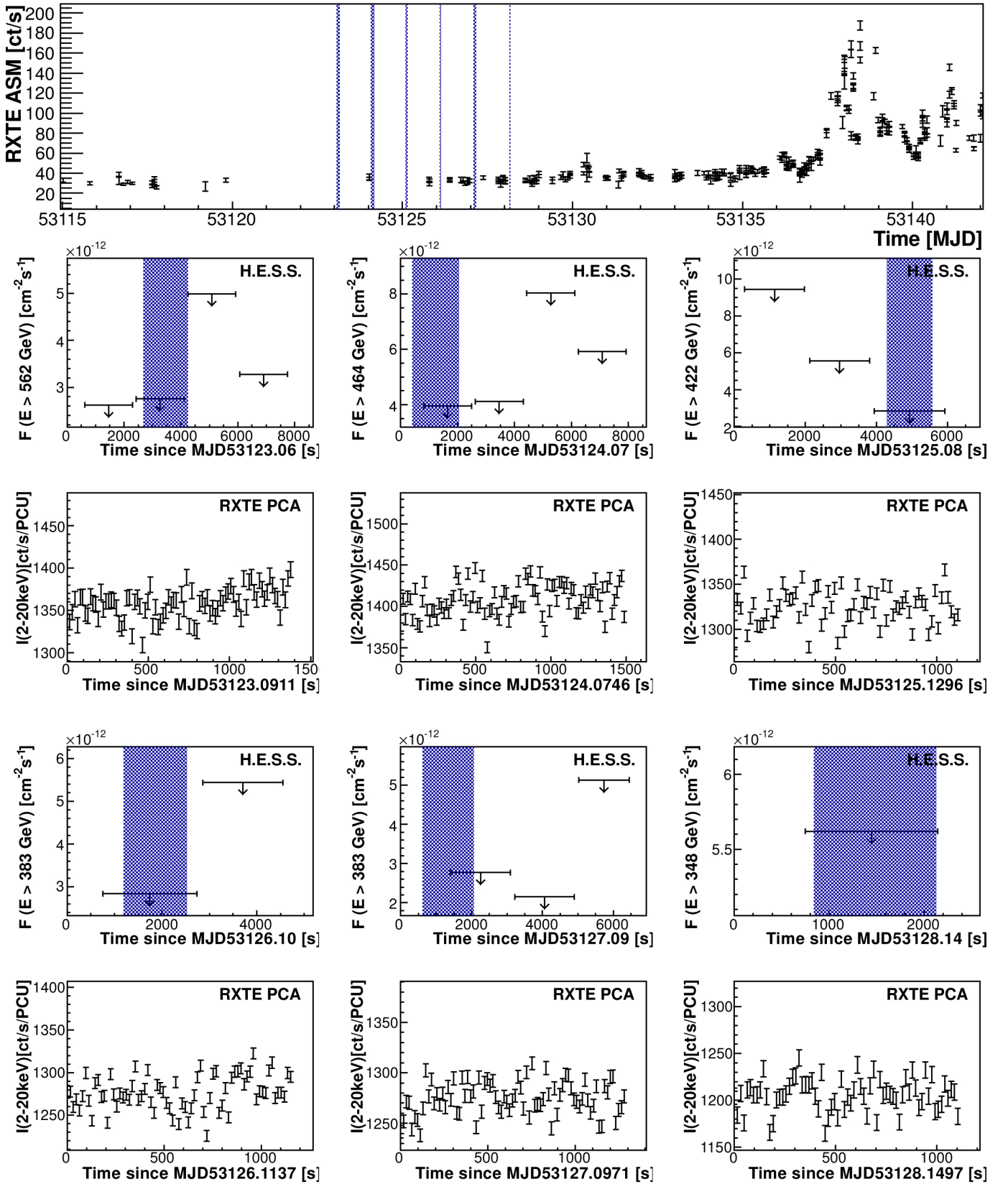
Observations of V4641 Sgr with H.E.S.S. were initiated on 7 July 2004 (MJD 53 193) in response to the source brightening rapidly in the radio (Rupen et al. 2004b), optical (Revnivtsev et al. 2004), and X-ray (Swank 2004) bands. The resultant RXTE exposure comprised three observations, each contributing to an accumulated PCA livetime of 5 ks. Two pairs of  $\sim 30$  min H.E.S.S. observations were obtained contemporaneously with the final two RXTE pointings. In total, the four separate exposures constitute an overall livetime of 1.76 h.

### 3. Analysis and results

X-ray data reduction with the FTTOOLS 5.3.1 software suite employed the data selection criteria regarding elevation, offset, electron contamination, and proximity to the South Atlantic Anomaly recommended by the RXTE Guest Observer Facility website<sup>2</sup>. For each observation, the PCA STANDARD2 data were extracted from all available PCUs. For all observations, HEXTE Archive mode data for both clusters were extracted following the recommended procedures for time filtering and background estimation. Spectral analysis was carried out using the XSPEC 12.6.0 package (Arnaud 1996). Spectral fits for GRS 1915+105 use both PCA and HEXTE data, including an energy range of 3–200 keV. For bright X-ray sources, such as GRS 1915+105, statistical errors on the number of counts per spectral bin become insignificant relative to dominant uncertainties in the instrument response. Accordingly, a 1% systematic error was added to all PCA channels. The remaining sources, Cir X-1 and V4641 Sgr, were not significantly detected by HEXTE and therefore only PCA data in the 3–20 keV range were considered to ensure good data quality. These targets were sufficiently faint that the spectral bin uncertainties were statistically dominated and the addition of a systematic error component was not required. In the case of GRS 1915+105, power density spectra (PDS) were derived using the *ftool* *powspec*. For each RXTE pointing of GRS 1915+105, individual PDS were extracted from 128 s intervals comprising  $2^{14}$  bins. The resulting spectra were then averaged to produce a PDS for the total light curve with errors estimated using the standard deviation of the average of the power in each frequency bin. The overall PDS were logarithmically rebinned and normalised to represent the squared fractional RMS in each frequency bin (see e.g. Lewin et al. 1988). Corrections for instrument deadtime (see, for example, Revnivtsev et al. 2000) were applied (although this was found to have a negligible effect in the frequency range under consideration) and the expected white noise level was subtracted (Leahy et al. 1983). Similar temporal analyses for the remaining targets proved unfeasible because of insufficient count statistics at all but the lowest frequencies.

The  $\gamma$ -ray analysis followed the standard point-source procedure described in Aharonian et al. (2006b). The reflected background model (see, for example, Berge et al. 2007) was used to derive overall results in conjunction with both the *hard* and *standard* event selection cuts described by Aharonian et al. (2006b).

<sup>2</sup> [http://heasarc.nasa.gov/docs/xte/xhp\\_proc\\_analysis.html](http://heasarc.nasa.gov/docs/xte/xhp_proc_analysis.html)



**Fig. 1.** RXTE ASM, and PCA light curves for GRS 1915+105 together with H.E.S.S. upper limits derived from individual  $\sim 28$  min runs using standard event selection cuts. The blue shaded bands on the ASM light curve indicate the extent of the H.E.S.S. observations, while on the H.E.S.S. upper limit plots similar bands illustrate the duration of the contemporaneous PCA observations. The plotted H.E.S.S. upper limits correspond to different threshold energies and the vertical scale of each light curve has been optimised for the plotted data.

**Table 3.** H.E.S.S. VHE  $\gamma$ -ray significances corresponding to hard and standard event selection regimes.

Target	Image Cuts	$N_{\text{ON}}$ [events]	$N_{\text{OFF}}$ [events]	$\alpha$	Excess [events]	Significance [ $\sigma$ ]
GRS 1915+105	Standard	471	7127	0.073	-51.6	-2.2
	Hard	36	783	0.060	-10.9	-1.6
Cir X-1	Standard	385	5959	0.068	-20.1	-1.0
	Hard	45	648	0.056	9.1	1.4
V4641 Sgr	Standard	161	2373	0.067	1.2	0.1
	Hard	11	275	0.055	-4.2	-1.11

**Table 4.** H.E.S.S. VHE  $\gamma$ -ray integral flux upper limits above the telescope energy threshold corresponding to both event selection regimes.

Target	Cuts	$T_{\text{Live}}$ [s]	$\bar{Z}_{\text{max}}$ [ $^{\circ}$ ]	$E_{\text{thresh}}$ [GeV]	$I(>E_{\text{thresh}})$ [ $\text{ph cm}^{-2} \text{s}^{-1}$ ]
GRS 1915+105	Standard	24681	40.6	562	$<7.338 \times 10^{-13}$
	Hard	24681	40.6	1101	$<1.059 \times 10^{-13}$
Cir X-1	Standard	19433	43.6	562	$<1.172 \times 10^{-12}$
	Hard	19433	43.6	1101	$<4.155 \times 10^{-13}$
V4641 Sgr	Standard	6335	8.4	237	$<4.477 \times 10^{-12}$
	Hard	6335	8.4	422	$<4.795 \times 10^{-13}$

**Notes.** The upper limits are derived at the 99% confidence level, assuming a power-law spectrum ( $dN/dE \propto E^{-\Gamma}$ ) with the photon index  $\Gamma_{\text{std}} = 2.6$  for standard cuts and  $\Gamma_{\text{hard}} = 2.0$  for hard cuts. The rather high threshold energies derived for GRS 1915+105 and Cir X-1 are the result of large maximum observational zenith angles.

Hard cuts (image size  $\geq 200$  photoelectrons) tend to enhance the signal of sources with power-law spectral slopes that are harder in comparison to the dominant cosmic ray background. Standard cuts (image size  $\geq 80$  photoelectrons) provide less sensitivity in such cases but allow a lower energy threshold. No significant detection was obtained for any of the three targets. Upper limits to the VHE  $\gamma$ -ray flux above the instrumental threshold energy were therefore derived at the 99% confidence level using the profile likelihood method (Rolke et al. 2005).

### 3.1. GRS 1915+105

As illustrated by the PCA and ASM light curves shown in Fig. 1, the X-ray count rate was stable to within  $\sim 10\%$  during each observation and varied by no more than  $\sim 20\%$  between observations. Indeed, the long-term RXTE ASM light curve in Fig. 1 (top panel) clearly indicates that the H.E.S.S. observation epochs occurred during an extended and relatively faint plateau in the 2–10 keV flux.

The 3–200 keV X-ray spectra shown in Fig. A.4 also exhibit remarkable stability between observations. The individual spectra are dominated by a hard non-thermal component and strongly suggest class  $\chi$  (in state C) behaviour (e.g. Zdziarski et al. 2001; Trudolyubov 2001), which is confirmed by the location of the observations in the HID of Fig. A.1, according to the classification of Belloni et al. (2000). Figure A.2 shows the contextual X-ray and 15 GHz radio light curves of GRS 1915+105 during a two-month period that brackets the H.E.S.S. observation epochs. It is evident from the figure that H.E.S.S. observed the target during an extended radio-loud plateau ( $\sim 80$  mJy; for historical flux comparison, a three-year monitoring campaign is presented in Pooley 2006). The plateau ended approximately ten days later with a combined radio and X-ray flaring episode. The assertion of radio-loud behaviour at the H.E.S.S. observation epochs is supported by the quasi-periodic oscillation (QPO) analysis presented in Fig. A.3. For a detailed discussion see Appendix A.1.

In summary, the combined spectral and temporal analyses indicate a robust association of the contemporaneous H.E.S.S.

observation with the radio-loud  $\chi$  state, and the presence of steady, mildly relativistic jets at the time of observation may be confidently inferred.

The contemporaneous H.E.S.S. observations did not yield a significant VHE  $\gamma$ -ray detection. The significances corresponding to the total H.E.S.S. exposure are computed using Eq. (17) from Li & Ma (1983) and are listed in Table 3. Figure 1 plots runwise 99% confidence level upper limits to the integral VHE  $\gamma$ -ray flux above the instrumental threshold energy and illustrates the overlap between the RXTE and H.E.S.S. observations. Integral flux upper limits, which correspond to the overall H.E.S.S. exposure, are listed in Table 4.

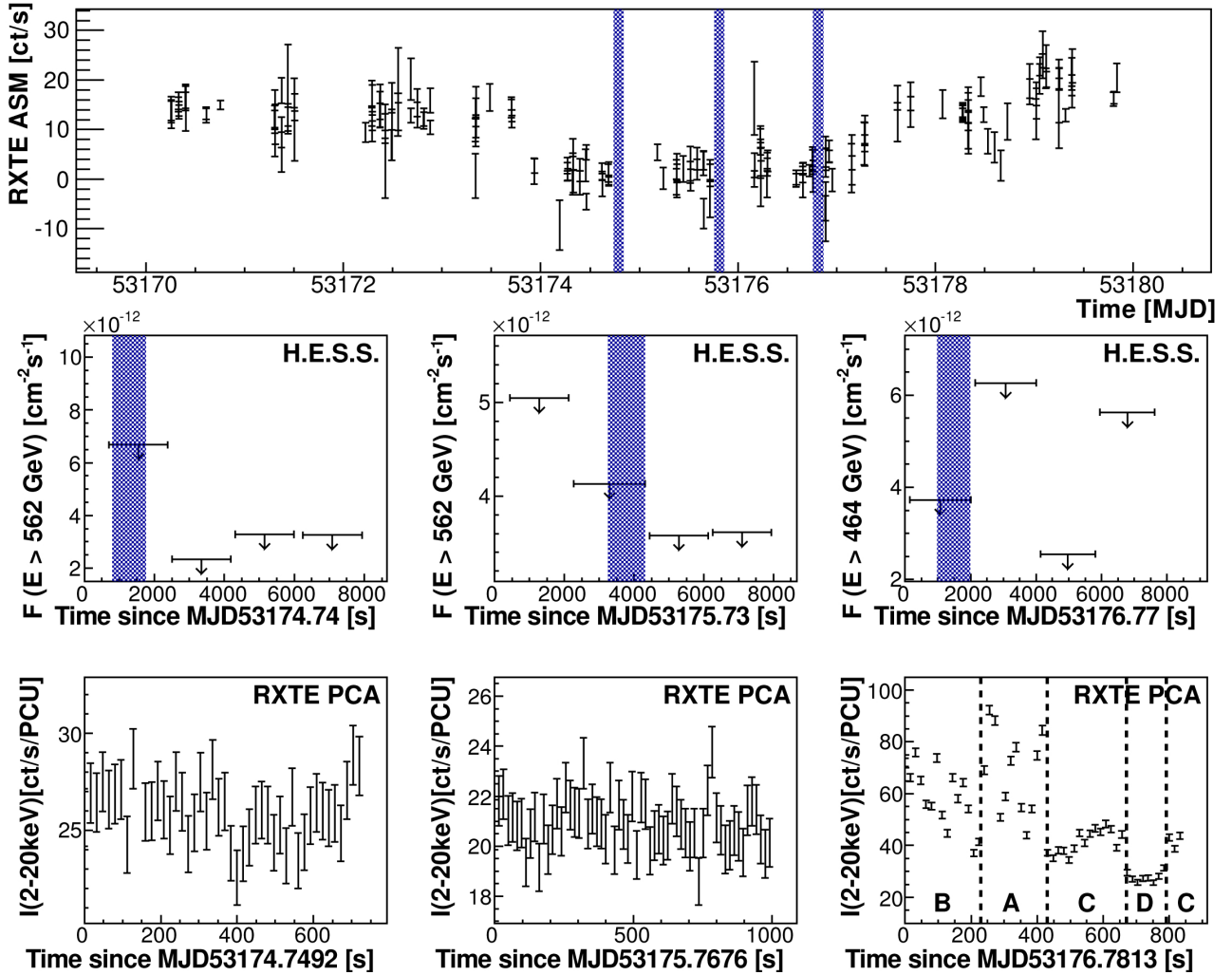
### 3.2. Cir X-1

The ASM light curve shown in Fig. 2 reveals that the H.E.S.S. observation epochs occurred during an extended  $\sim 4$  day dip in the 2–10 keV X-ray flux. Additionally, it should be noted that the observations reported here were obtained during an extremely faint episode in the secular X-ray flux evolution of Cir X-1 (Parkinson et al. 2003), which is also evident from the HID presented in Fig. A.5. As a consequence, the measured X-ray fluxes are significantly lower than most others reported for this source. As illustrated in Fig. 2, the individual PCA light curves obtained during the first two pointings are characterised by a relatively low count rate, which remains approximately constant throughout each observation. In marked contrast, the third observation exhibits clear variability with count rates doubling on timescales of  $\sim 50$  s.

A detailed analysis of the obtained spectra (see Appendix A.2) reveals that the observed flux variability is accompanied by marked variations in spectral shape. These can be interpreted as hinting towards a strong mass transfer during the periastron passage and subsequent dramatic evolution of the local radiative environment.

H.E.S.S. observations obtained contemporaneously with the RXTE pointings yield a non-detection that is evident from the significances listed in Table 3. Figure 2 plots runwise 99% confidence level upper limits to the integral VHE  $\gamma$ -ray flux





**Fig. 2.** RXTE ASM and PCA light curves for Cir X-1 together with H.E.S.S. upper limits derived from individual  $\sim 28$  min runs using standard event selection cuts. The blue shaded bands on the ASM light curve indicate the extent of the H.E.S.S. observations, while on the H.E.S.S. upper limit plots similar bands illustrate the duration of the contemporaneous PCA observations (OBS 1–3). The partitioning of OBS 3 into sub-intervals A–D based on 2–20 keV X-ray flux is illustrated in the *bottom right panel*. The plotted H.E.S.S. upper limits correspond to different threshold energies, and the vertical scale of each light curve has been optimised for the plotted data.

above the instrumental threshold energy and illustrates complete overlap between the RXTE and H.E.S.S. observations. Integral flux upper limits, which correspond to the overall H.E.S.S. exposure, are listed in Table 4.

### 3.3. V4641 Sgr

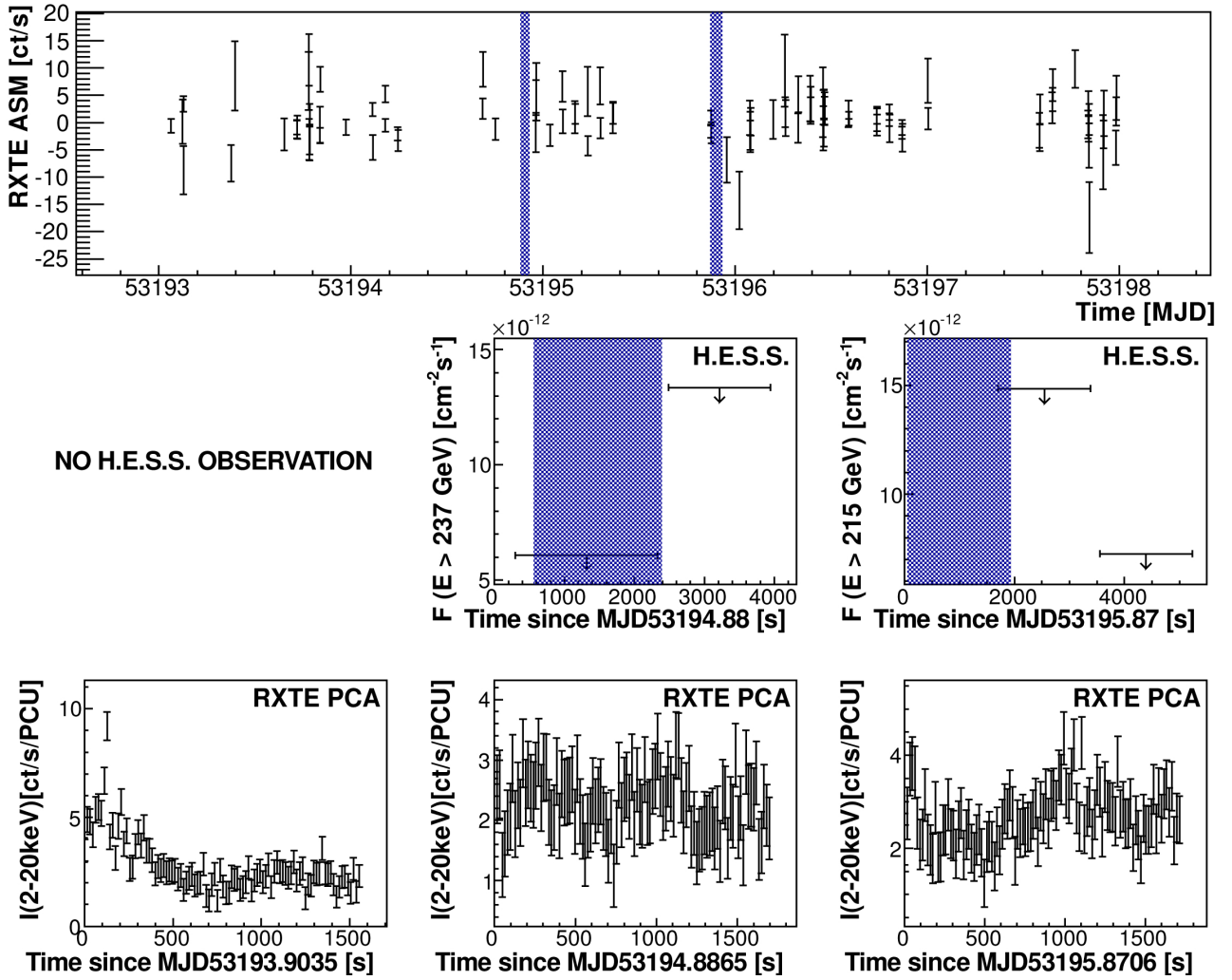
Figure 3 shows RXTE PCA light curves derived from three pointed observations. The individual light curves indicate various degrees of X-ray variability with the clearest evidence for flaring visible as a sharp  $\sim 5$ -fold count rate fluctuation during the first observation. In marked contrast, the second observation is uniformly faint with the  $\chi^2$  probability of constant count rate  $P_{\text{const}} = 0.97$  and, hence, this observation is consistent with a period of steady, low-level emission. Subsequently, the third observation reveals a reemergence of mild variability ( $P_{\text{const}} = 0.07$ ) with  $\sim 2$ -fold count rate fluctuations occurring on timescales of  $\sim 500$  s.

Radio data shown in Fig. A.7 right were obtained using the VLA and Australia Telescope Compact Array (ATCA) between MJD 53 190 and MJD 53 208. They indicate rapid variability with peak flux densities of  $\sim 30$  mJy observed on MJD 53 193 (Rupen et al. 2004b; Senkbeil & Sault 2004;

Rupen et al. 2004a). An optically thin radio spectrum ( $S_\nu \propto \nu^{-0.7}$ ) observed on MJD 53 191 was interpreted by Rupen et al. (2004b) as the signature of a decaying radio flare. Radio observations were triggered by an optical alert from VSNET (MJD 53 190) in combination with a RXTE PCA measurement during a Galactic bulge scan (MJD 53 189) that revealed a 2–10 keV X-ray flux equivalent to 8.2 mCrab. For comparison, the August 2003 flare of V4641 Sgr reached 66 mCrab, while quiescent fluxes are typically  $< 0.5$  mCrab (Swank 2004). As shown in Fig. A.7 right, the dedicated RXTE PCA observation and H.E.S.S. observations took place between two radio flares, which is consistent with the X-ray variability evolution illustrated in Fig. 3.

While V4641 Sgr is evidently the most X-ray-faint binary in the studied sample, it simultaneously exhibits the hardest spectrum, as shown by the hardness values in Fig. A.7 (left-hand panel). Furthermore, the evolution of the hardness is consistent with contemporaneous observations of rapid flux evolution in the radio band (Senkbeil & Sault 2004)<sup>3</sup> (Fig. A.7). To help place the H.E.S.S. and RXTE observations in a historical context, the HID for V4641 Sgr in Fig. A.8 displays the entire

<sup>3</sup> <http://www.ph.unimelb.edu.au/~rsault/astro/v4641/>



**Fig. 3.** RXTE ASM and PCA light curves for V4641 Sgr together with H.E.S.S. upper limits derived from individual  $\sim 28$  min runs using standard event selection cuts. The blue shaded bands on the ASM light curve indicate the extent of the H.E.S.S. observations, while on the H.E.S.S. upper limit plots they illustrate the duration of the contemporaneous PCA observations. The plotted H.E.S.S. upper limits correspond to different threshold energies and the vertical scale of each light curve has been optimised for the plotted data.

archival RXTE PCA data set for this target, and compares the X-ray characteristics corresponding to the H.E.S.S. observation periods (different symbols are used to indicate observations obtained on each day in the range MJD 53 193–5) with three flaring episodes observed with RXTE. On 15 September 1999 (orange markers in Fig. A.8), a 1500 s RXTE observation revealed a source flux evolution that is characterised by rapid, large-amplitude variability before reverting to a soft, low intensity state after  $\sim 1000$  s. An optical flare that preceded the RXTE observations likely corresponds with the onset of the short 10-hour outburst, which [Wijnands & van der Klis \(2000\)](#) associated with a low  $\dot{M}$  accretion event. Historically, flaring episodes exhibited by V4641 Sgr are often short, unpredictable, and relatively faint, which implies that many may go unnoticed.

Data corresponding to two longer outbursts, spanning the periods 24–26 May 2002 and 5–7 August 2003, are also illustrated in Fig. A.8. In the coordinates of the HID, both episodes are topologically similar to the 1999 outburst, but shifted towards fainter harder regions.

Evidently, the X-ray fluxes that correspond with H.E.S.S. observation epochs indicated in Fig. A.8 are substantially fainter than any of these historically remarkable outbursts.

In summary, in view of the various multiwavelength data, it seems likely that V4641 Sgr underwent a period of mild activity that spanned the H.E.S.S. observation epochs.

The contemporaneous H.E.S.S. data are consistent with non-detection with the corresponding  $\gamma$ -ray significances listed in Table 3. Technical issues prevented  $\gamma$ -ray data corresponding to the first RXTE observation from being obtained. Simultaneous  $\gamma$ -ray observations were obtained corresponding to the second RXTE exposure, which showed no indications of X-ray variability. Although the source began to show increased X-ray activity during the third RXTE observation, the degree of overlap with the corresponding H.E.S.S. observations was minimal. At radio, optical, and X-ray energies, V4641 Sgr exhibits rapid variability on timescales  $\sim 10$  min or less (e.g. [Uemura et al. 2005](#); [Maitra & Bailyn 2006](#)). Optimistically, the compelling evidence for mild broadband flaring admits the possibility that the H.E.S.S. observations monitor a transient outburst event.

Integral flux upper limits above the instrumental threshold energy, which correspond to the overall H.E.S.S. exposure at the position of V4641 Sgr, are listed in Table 4.

**Table 5.** Estimated maximum VHE  $\gamma$ -ray luminosities of the target microquasars, which would still be consistent with a non-detection given the flux upper limits presented in Table 4.

Target	Maximum distance estimate [kpc]	$E_{\text{thresh}}$ [GeV]	Luminosity above $E_{\text{thresh}}$ [erg s <sup>-1</sup> ]
GRS 1915+105	10.6	562	$<2.3 \times 10^{34}$
Cir X-1	10.2	562	$<3.4 \times 10^{34}$
V4641 Sgr	6.9	237	$<2.5 \times 10^{34}$

**Notes.** Source distances correspond to the largest estimate that was found in the literature (see Sect. 2). The energy threshold of Cherenkov telescope arrays increases with observational zenith angle.

#### 4. Discussion

The principal aim of this investigation was to obtain contemporaneous X-ray and VHE  $\gamma$ -ray observations of three known superluminal microquasars during major flaring events. However, the results presented in Sect. 3 indicate that the interpretation of the VHE  $\gamma$ -ray non-detections cannot proceed under the assumption of energetic flaring or bulk superluminal ejections at the time of observation. Nonetheless, upper limits to the VHE  $\gamma$ -ray flux were derived and an analysis of the contemporaneous RXTE observations has helped to reveal the X-ray behaviour corresponding to the H.E.S.S. observation epochs. These data facilitate the straightforward derivation of constraints on the  $\gamma$ -ray luminosity of the target binary systems. In Table 5 the calculated flux upper limits were used to infer the maximum  $\gamma$ -ray luminosities above the target-specific, instrumental threshold energy for each target binary system by assuming the maximum source distance estimate presented in Table 1.

Analysis of the contemporaneous X-ray and radio observations conclusively places GRS 1915+105 in a radio-loud plateau state at the time of observation. In contrast with the superluminal flaring episodes, this state is characterised by the production of continuous, mildly relativistic radio jets with an estimated power of  $\sim 3 \times 10^{38}$  erg s<sup>-1</sup> (Klein-Wolt et al. (2002), assuming a distance of 11 kpc). Theoretically, it seems unlikely that bright VHE  $\gamma$ -ray emission would be expected from the compact self-absorbed jets, which are typical of the plateau state of GRS 1915+105. For example, a leptonic emission model developed by Bosch-Ramon et al. (2006) to simulate the broadband emission of microquasar jets in the low-hard state predicts VHE  $\gamma$ -ray luminosities  $\lesssim 10^{33}$  erg s<sup>-1</sup> that are consistent with the H.E.S.S. non-detection. Notwithstanding the plausibility of VHE  $\gamma$ -ray emission in the plateau state, a comparison of the estimated jet power with the maximum  $\gamma$ -ray luminosity listed in Table 5 reveals that the jet power conversion efficiency is constrained to be  $\lesssim 0.008\%$  for  $\gamma$ -ray production above 562 GeV. For comparison, corresponding efficiency estimates for  $\gamma$ -ray production were derived for the steady, compact jets of other microquasars that were observed in appropriate states. The published MAGIC upper limit on the VHE  $\gamma$ -ray luminosity of Cygnus X-3 during its hard state implies a somewhat larger maximum conversion efficiency of 0.07% (Aleksić et al. 2010) and a similar value is obtained from MAGIC upper limits on the steady VHE emission from Cygnus X-1 (Albert et al. 2007). These efficiencies are inferred from the directly observed jet power, and should be distinguished from the higher jet powers that were indirectly derived from the observation of radio-emitting bubbles inflated by microquasar jets (see e.g. Gallo et al. 2005 for Cyg X-1; and Pakull et al. 2010; Soria et al. 2010 for S26 in NGC 7793).

We presented an analysis of the entire H.E.S.S. data set for GRS 1915+105 (Acero et al. 2009) and we derived an upper limit to the  $\gamma$ -ray flux above 0.41 TeV of  $6.1 \times 10^{-13}$  cm<sup>-2</sup> s<sup>-1</sup>,

corresponding to a detector livetime of 24.1 h. The somewhat higher upper limits presented in Sect. 3.1 utilise a more limited data set and are therefore consistent with the previously published value. None of the H.E.S.S. observations of GRS 1915+105 coincide with bright flaring episodes at longer wavelengths.

Observations of Cir X-1 were obtained during an extended dip in the X-ray flux, at phase intervals close to the periastron passage of the binary components. Spectral analysis of the RXTE data showed some evidence for a recent increase in mass transfer, producing strong signatures of X-ray absorption. It was hoped that H.E.S.S. observations would coincide with one of the quasi-regular radio flares, which often accompany periastron passage in Cir X-1.

The ephemeris of Nicolson (2007) predicts the onset of a radio flare  $\sim 19$ – $20$  h before the first RXTE observation. Unfortunately, despite the undoubted occurrence of quasi-periodic radio flares from Cir X-1 near periastron, a robust correlation between the observed X-ray and radio behaviour is yet to be identified. Although rapid brightening of the X-ray continuum might indicate accompanying radio flares, evidence for a definitive association is far from clear (Soleri et al. 2007; Tudose et al. 2008). Recent radio observations of Cir X-1 (e.g. Fender et al. 2004a; Tudose et al. 2008) focus primarily on the ultrarelativistic ejection events that manifest as  $\geq 3$  day episodes of flaring on timescales of a few hours. In principle, the lack of contemporaneous radio data admits the possibility of such persistent outbursts at the time of observation. By analogy with canonical black hole binaries, it is possible that the inferred variation in the mass accretion rate between the first and second RXTE observations also implies an evolution of the jet properties (Migliari & Fender 2006), but this is far from clear in such an unusual system. Moreover, Tudose et al. (2008) report compelling evidence that prior to 2006, Cir X-1 underwent a  $\sim 6$  yr episode of unusual radio quiescence, suggesting that jet formation was somewhat suppressed during the epochs of H.E.S.S. observation. Accordingly, without strictly simultaneous radio data indicating otherwise, the most likely scenario is that no outflows were present. In this context the absence of a detectable  $\gamma$ -ray signal is not surprising.

As a confirmed high-mass black hole binary, V4641 Sgr is the studied target that most closely resembles the Cygnus X-1 and Cygnus X-3 systems. Moreover, the H.E.S.S. observations were obtained during a period of sporadic broadband flaring, and comparing these observations with the results of Albert et al. (2007), VHE  $\gamma$ -ray emission might have been expected. The detection of Cyg X-1 using the MAGIC telescopes appeared to coincide with the rising part of a strong X-ray flare. In contrast, radio spectra obtained close to the H.E.S.S. observational epochs are indicative of the decay following a flaring episode (Senkbeil & Sault 2004). Assuming that the  $\gamma$ -ray emission mechanisms operating in Cyg X-1 also occur in V4641 Sgr,

the absence of a significant H.E.S.S. detection might be viewed as evidence that production of GeV and TeV photons is a highly transient process. This would further suggest that  $\gamma$ -ray emission originates in a spatially compact region that is at most a few light hours in size.

Absorption of  $\gamma$ -rays by pair production is expected to be negligible in GRS 1915+105, since the donor star is too cool and faint to produce a strong ultraviolet photon field. The same is true of Cir X-1 if the conventional assumption of a low-mass companion is adopted. For completeness, Fig. 4 plots the level of  $\gamma$ -ray absorption predicted by a numerical implementation of the model presented by Dubus (2006), assuming that the companion star in Cir X-1 is in fact a mid-B supergiant as proposed by Jonker et al. (2007). The separate curves are representative of the three orbital phase intervals corresponding to the H.E.S.S. observation epochs, and were derived using the system parameters derived by Jonker et al. (2007) in conjunction with typical values for the temperature ( $T_{\text{eff}} \approx 20\,000$  K) and radius ( $R \approx 9 R_{\odot}$ ) of a mid-B supergiant. It is evident that some non-negligible absorption is expected, particularly during the first observation interval. Nonetheless, it seems unlikely that the expected levels of attenuation ( $\lesssim 20\%$ ) would suppress an otherwise detectable  $\gamma$ -ray flux sufficiently to yield the low significances listed in Table 3.

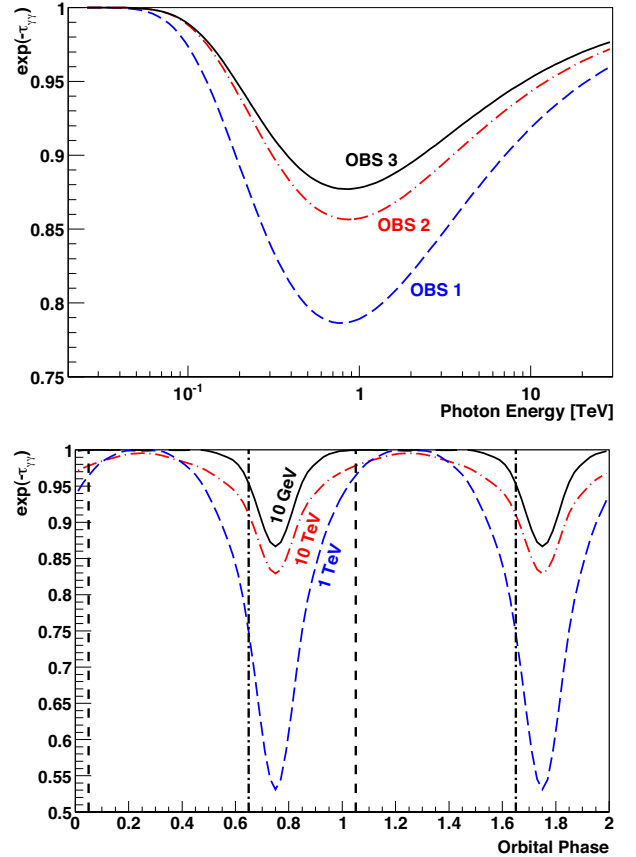
The situation with regard to  $\gamma$ -ray absorption is clearer in the case of V4641 Sgr, since the companion has been spectroscopically identified as a late B- or early A-type star. Using the system parameters derived by Orosz et al. (2001) and assuming a circularised orbit, the model presented by Dubus (2006) was used to predict the expected levels of  $\gamma$ -ray absorption as a function of orbital phase. As illustrated in Fig. 4 (bottom panel), absorption might have an important effect during the first H.E.S.S. observation interval, although as with Cir X-1 the predicted levels of absorption ( $\lesssim 25\%$ ) would not attenuate a bright  $\gamma$ -ray signal so far below the detection threshold. During the second H.E.S.S. observation interval, when X-ray data show marginal indications of source activity, the predicted absorption due to pair production on the stellar radiation field is negligible. We note however that, as in the case of Cir X-1, the relative inclination of the jets from V4641 Sgr with respect to the accretion disk may be low (Schulz et al. 2006) and, therefore, further absorption of  $\sim 100$  GeV–TeV  $\gamma$ -ray photons could occur via interaction with the disk thermal photon field (see e.g. Carraminana 1992).

It should also be noted that all the confirmed VHE  $\gamma$ -ray binaries lie at distances of 2–4 kpc. In contrast, the targets reported here have maximum distances in the range 7–11 kpc, resulting in flux dilution factors that are greater by one order of magnitude. Obviously, this has strong implications for the detectability of any emitted  $\gamma$ -ray signal.

## 5. Conclusions

Contemporaneous VHE  $\gamma$ -ray and X-ray observations of GRS 1915+105, Cir X-1, and V4641 Sgr were obtained using H.E.S.S. and RXTE. Analysis of the resultant H.E.S.S. data did not yield a significant detection for any of the target microquasars. However, X-ray binaries are dynamic systems and as such are likely to exhibit evolution of their radiative properties, both as a function of orbital phase and also in response to non-deterministic properties. It follows that the non-detections presented in this work do not indicate that the target binary systems do not emit detectable VHE  $\gamma$ -ray emission at phases other than those corresponding to the H.E.S.S. observations.

GRS 1915+105 appears to have been observed during an extended plateau state, the archival multiwavelength data sug-



**Fig. 4.** Levels of  $\gamma$ -ray absorption due to pair production with stellar photons as predicted by the numerical model outlined by Dubus (2006). *Top panel:* expected  $\gamma$ -ray transmission as a function of photon energy for Cir X-1 assuming an inclination  $i = 66^\circ$  and using the best-fit ephemeris derived by Jonker et al. (2007), which is appropriate for a mid-B supergiant companion. The individual curves correspond to the orbital phases of the first (blue dashed), second (red dot-dashed), and third (black solid) H.E.S.S. observation intervals. *Bottom panel:* expected  $\gamma$ -ray transmission for V4641 Sgr as a function of orbital phase derived using the orbital solution of Orosz et al. (2001) and assuming a circularised orbit. The individual curves represent photon energies of 10 GeV (black solid), 1 TeV (blue dashed), and 10 TeV (red dot-dashed). Vertical lines indicate the first (dot-dashed) and second (dashed) H.E.S.S. observation epochs.

gesting the presence of continuous, mildly relativistic radio jets at the time of observation. The RXTE observations of Cir X-1 yield data that are consistent with strongly varying obscuration of the X-ray source shortly after periastron passage, but these data are not indicative of bright flaring during the H.E.S.S. observation epochs. Conversely, V4641 Sgr appears to have been observed during an episode of mild, transient flaring, although rapid source variability, combined with the limited duration of the strictly simultaneous H.E.S.S. and RXTE exposure, complicates interpretation.

Microquasars continue to be classified as targets of opportunity for IACTs, requiring a rapid response to any external trigger to maximise the likelihood of obtaining a significant detection. These conditions are realised with the commissioning of the H.E.S.S. 28 m telescope, which aims to lower the energy threshold from 100 GeV to about 30 GeV (Parsons et al. 2015; Holler et al. 2015a,b) while simultaneously enabling very rapid follow-up observations (Hofverberg et al. 2013). To exploit these new opportunities and an increasing understanding of the behaviour of microquasars, the triggering strategies

for TeV follow-up observations have evolved significantly in recent years. In the future, alternative observational strategies, including continuous monitoring of candidate microquasars in the VHE  $\gamma$ -ray band, may become possible using dedicated sub-arrays of the forthcoming Cherenkov Telescope Array (CTA Consortium 2011).

Irrespective of the non-detections presented herein, the tantalising observations of Cygnus X-3 at GeV energies and Cygnus X-1 by the MAGIC telescope ensures that the motivations for observing microquasars using IACTs remain compelling. Indeed, by further constraining the  $\gamma$ -ray emission properties of microquasars, subsequent observations will inevitably yield an enhanced understanding of astrophysical jet production on all physical scales. More optimistically, the detection of additional  $\gamma$ -ray-bright microquasars would greatly facilitate a comprehensive characterisation of the particle acceleration and radiative emission mechanisms that operate in such systems.

*Acknowledgements.* The support of the Namibian authorities and of the University of Namibia in facilitating the construction and operation of H.E.S.S. is gratefully acknowledged, as is the support by the German Ministry for Education and Research (BMBF), the Max Planck Society, the German Research Foundation (DFG), the French Ministry for Research, the CNRS-IN2P3 and the Astroparticle Interdisciplinary Programme of the CNRS, the UK Science and Technology Facilities Council (STFC), the IPNP of the Charles University, the Czech Science Foundation, the Polish Ministry of Science and Higher Education, the South African Department of Science and Technology and National Research Foundation, and by the University of Namibia. We appreciate the excellent work of the technical support staff in Berlin, Durham, Hamburg, Heidelberg, Palaiseau, Paris, Saclay, and in Namibia in the construction and operation of the equipment.

## References

- Abdo, A. A., et al. (Fermi LAT Collaboration) 2009, *Science*, **326**, 1512
- Abramowski, A., Acero, F., Aharonian, F., et al. 2012, *ApJ*, **757**, 158
- Acciari, V. A., Aliu, E., Arlen, T., et al. 2009, *Nature*, **462**, 770
- Acero, F., Aharonian, F., Akhperjanian, A. G., & H.E.S.S. Collaboration. 2009, *A&A*, **508**, 1135
- Aharonian, F. A., & Atoyan, A. M. 1996, *A&A*, **309**, 917
- Aharonian, F., Akhperjanian, A., Beilicke, M., et al. 2003, *A&A*, **403**, L1
- Aharonian, F., Akhperjanian, A. G., Bazer-Bachi, A. R., et al. 2006a, *A&A*, **457**, 899
- Aharonian, F., Akhperjanian, A. G., Bazer-Bachi, A. R., et al. 2006b, *A&A*, **449**, 223
- Aharonian, F., Akhperjanian, A. G., Bazer-Bachi, A. R., et al. 2006c, *A&A*, **460**, 743
- Aharonian, F., Akhperjanian, A. G., Anton, G., et al. 2009, *ApJ*, **695**, L40
- Albert, J., Aliu, E., Anderhub, H., et al. 2007, *ApJ*, **665**, L51
- Aleksić, J., Antonelli, L. A., Antonozzi, P., et al. 2010, *ApJ*, **721**, 843
- Aleksić, J., Alvarez, E. A., Antonelli, L. A., et al. 2012, *A&A*, **539**, L2
- Arnaud, K. A. 1996, in *Astronomical Data Analysis Software and Systems V*, eds. G. H. Jacoby, & J. Barnes, *ASP Conf. Ser.*, **101**, 17
- Atoyan, A. M., & Aharonian, F. A. 1999, *MNRAS*, **302**, 253
- Bednarek, W. 2010, *MNRAS*, **406**, 689
- Belloni, T., Mendez, M., King, A. R., van der Klis, M., & van Paradijs, J. 1997, *ApJ*, **488**, L109
- Belloni, T., Klein-Wolt, M., Méndez, M., van der Klis, M., & van Paradijs, J. 2000, *A&A*, **355**, 271
- Belloni, T., Psaltis, D., & van der Klis, M. 2002, *ApJ*, **572**, 392
- Berge, D., Funk, S., & Hinton, J. 2007, *A&A*, **466**, 1219
- Bosch-Ramon, V., Romero, G. E., & Paredes, J. M. 2006, *A&A*, **447**, 263
- Böttcher, M., & Dermer, C. D. 2005, *ApJ*, **634**, L81
- Carraminana, A. 1992, *A&A*, **264**, 127
- Castro-Tirado, A. J., Brandt, S., Lund, N., et al. 1994, *ApJS*, **92**, 469
- Clark, J. S., Charles, P. A., Clarkson, W. I., & Coe, M. J. 2003, *A&A*, **400**, 655
- Coppi, P. S. 2000, *BAAS*, **32**, 1217
- Corbel, S., Dubus, G., Tomsick, J. A., et al. 2012, *MNRAS*, **421**, 2947
- CTA Consortium. 2011, *Exp. Astron.*, **32**, 193
- Dermer, C. D., & Böttcher, M. 2006, *ApJ*, **643**, 1081
- Done, C., Gierliński, M., & Kubota, A. 2007, *A&ARv*, **15**, 1
- Dubus, G. 2006, *A&A*, **451**, 9
- Dubus, G., Cerutti, B., & Henri, G. 2010, *MNRAS*, **404**, L55
- Eikenberry, S. S., Matthews, K., Morgan, E. H., Remillard, R. A., & Nelson, R. W. 1998, *ApJ*, **494**, L61
- Falcke, H., Körding, E., & Markoff, S. 2004, *A&A*, **414**, 895
- Fender, R., & Belloni, T. 2004, *ARA&A*, **42**, 317
- Fender, R. P., Pooley, G. G., Brocksopp, C., & Newell, S. J. 1997, *MNRAS*, **290**, L65
- Fender, R., Spencer, R., Tzioumis, T., et al. 1998, *ApJ*, **506**, L121
- Fender, R., Wu, K., Johnston, H., et al. 2004a, *Nature*, **427**, 222
- Fender, R. P., Belloni, T. M., & Gallo, E. 2004b, *MNRAS*, **355**, 1105
- Gallo, E., Fender, R., Kaiser, C., et al. 2005, *Nature*, **436**, 819
- Georganopoulos, M., Aharonian, F. A., & Kirk, J. G. 2002, *A&A*, **388**, L25
- Ghisellini, G., & Maraschi, L. 1989, *ApJ*, **340**, 181
- Gierliński, M., Done, C., & Page, K. 2009, *MNRAS*, **392**, 1106
- Gould, R. J., & Schröder, G. P. 1967, *Phys. Rev.*, **155**, 1404
- Greiner, J., Cuby, J. G., McCaughrean, M. J., Castro-Tirado, A. J., & Mennickent, R. E. 2001, *A&A*, **373**, L37
- Heinz, S., Burton, M., Braiding, C., et al. 2015, *ApJ*, **806**, 265
- Hjellming, R. M. 2000, *The Astronomer's Telegram*, **61**, 1
- Hjellming, R. M., Rupen, M. P., Hunstead, R. W., et al. 2000, *ApJ*, **544**, 977
- Hofverberg, P., Kankanyan, R., Panter, M., et al. 2013, in *Proc. 33rd ICRC [arXiv:1307.4550]*
- Holler, M., Balzer, A., Chalmé-Calvet, R., de Naurois, M., & Zaborov, D. 2015a, *PoS(ICRC2015)980*
- Holler, M., Berge, D., van Eldik, C., et al. 2015b, *PoS(ICRC2015)847*
- Homan, J., & Belloni, T. 2005, *Ap&SS*, **300**, 107
- Iaria, R., Di Salvo, T., Burderi, L., & Robba, N. R. 2001, *ApJ*, **561**, 321
- in 't Zand, J., Heise, J., Bazzano, A., et al. 1999, *IAU Circ.*, **7119**, 1
- Johnston, H. M., Fender, R., & Wu, K. 1999, *MNRAS*, **308**, 415
- Jonker, P. G., Nelemans, G., & Bassa, C. G. 2007, *MNRAS*, **374**, 999
- Jourdain, E., Roques, J. P., Chauvin, M., & Clark, D. J. 2012, *ApJ*, **761**, 27
- Kalberla, P. M. W., Burton, W. B., Hartmann, D., et al. 2005, *A&A*, **440**, 775
- Klein-Wolt, M., Fender, R. P., Pooley, G. G., et al. 2002, *MNRAS*, **331**, 745
- Königl, A. 1981, *ApJ*, **243**, 700
- Laurent, P., Rodriguez, J., Wilms, J., et al. 2011, *Science*, **332**, 438
- Leahy, D. A., Darbro, W., Elsner, R. F., et al. 1983, *ApJ*, **266**, 160
- Lewin, W. H. G., van Paradijs, J., & van der Klis, M. 1988, *Space Sci. Rev.*, **46**, 273
- Li, T.-P., & Ma, Y.-Q. 1983, *ApJ*, **272**, 317
- Linares, M., Watts, A., Altamirano, D., et al. 2010, *ApJ*, **719**, L84
- Lindström, C., Griffin, J., Kiss, L. L., et al. 2005, *MNRAS*, **363**, 882
- MacDonald, R. K. D., Bailyn, C. D., Buxton, M., et al. 2014, *ApJ*, **784**, 2
- Maitra, D., & Bailyn, C. D. 2006, *ApJ*, **637**, 992
- Malzac, J., Lubinski, P., Zdziarski, A. A., et al. 2008, *A&A*, **492**, 527
- Margon, B. 1984, *ARA&A*, **22**, 507
- Margon, B., Lampton, M., Bowyer, S., & Cruddace, R. 1971, *ApJ*, **169**, L23
- Markoff, S., Nowak, M. A., & Wilms, J. 2005, *ApJ*, **635**, 1203
- Markwardt, C. B., Swank, J. H., & Morgan, E. H. 1999a, *IAU Circ.*, **7257**, 2
- Markwardt, C. B., Swank, J. H., & Taam, R. E. 1999b, *ApJ*, **513**, L37
- McCollough, M. L., Finger, M. H., & Woods, P. M. 1999, *IAU Circ.*, **7257**, 1
- Merloni, A., Heinz, S., & di Matteo, T. 2003, *MNRAS*, **345**, 1057
- Migliari, S., & Fender, R. P. 2006, *MNRAS*, **366**, 79
- Mirabel, I. F., & Rodríguez, L. F. 1994, *Nature*, **371**, 46
- Moskalenko, I. V. 1995, *Space Sci. Rev.*, **72**, 593
- Muno, M. P., Morgan, E. H., & Remillard, R. A. 1999, *ApJ*, **527**, 321
- Murdin, P., Jauncey, D. L., Lerche, I., et al. 1980, *A&A*, **87**, 292
- Nicholas, B., & Rowell, G. 2008, in *AIP Conf. Ser.* 1085, eds. F. A. Aharonian, W. Hofmann, & F. Rieger, 245
- Nicolson, G. D. 2007, *The Astronomer's Telegram*, **985**, 1
- Oosterbroek, T., van der Klis, M., Kuulkers, E., van Paradijs, J., & Lewin, W. H. G. 1995, *A&A*, **297**, 141
- Orosz, J. A., Kuulkers, E., van der Klis, M., et al. 2001, *ApJ*, **555**, 489
- Pakull, M., Soria, R., & Motch, C. 2010, *Nature*, **466**, 209
- Parkinson, P. M. S., Tournear, D. M., Bloom, E. D., et al. 2003, *ApJ*, **595**, 333
- Parsons, R. D., Gajdus, M., & Murach, T. 2015, *PoS(ICRC2015)826*
- Pooley, G. 2006, in *VI Microquasar Workshop: Microquasars and Beyond*, 9
- Protheroe, R. J., & Stanev, T. 1987, *ApJ*, **322**, 838
- Reid, M. J., McClintock, J. E., Steiner, J. F., et al. 2014, *ApJ*, **796**, 2
- Revnitsev, M., Gilfanov, M., & Churazov, E. 2000, *A&A*, **363**, 1013
- Revnitsev, M., Gilfanov, M., Churazov, E., & Sunyaev, R. 2002, *A&A*, **391**, 1013
- Revnitsev, M., Khamitov, I., Burenin, R., et al. 2004, *The Astronomer's Telegram*, **297**, 1
- Rolke, W. A., López, A. M., & Conrad, J. 2005, *Nucl. Instrum. Meth. Phys. Res. A*, **551**, 493
- Romero, G. E., Torres, D. F., Kaufman Bernadó, M. M., & Mirabel, I. F. 2003, *A&A*, **410**, L1
- Romero, G. E., Christiansen, H. R., & Orellana, M. 2005, *ApJ*, **632**, 1093
- Romero, G. E., Vieyro, F. L., & Chaty, S. 2014, *A&A*, **562**, L7
- Rupen, M. P., Dhawan, V., & Mioduszewski, A. J. 2002, *IAU Circ.*, **7928**, 2
- Rupen, M. P., Mioduszewski, A. J., & Dhawan, V. 2003, *The Astronomer's Telegram*, **172**, 1

- Rupen, M. P., Dhawan, V., & Mioduszewski, A. J. 2004a, *The Astronomer's Telegram*, 303, 1
- Rupen, M. P., Mioduszewski, A. J., & Dhawan, V. 2004b, *The Astronomer's Telegram*, 296, 1
- Russell, D. M., Fender, R. P., Hynes, R. I., et al. 2006, *MNRAS*, 371, 1334
- Saito, T. Y., Zanin, R., Bordas, P., et al. 2009, in 31st ICRC (Łódź) [[arXiv:0907.1017](#)]
- Schulz, N. S., Brandt, W. N., Galloway, D. K., Chakrabarty, D., & Heinz, S. 2006, in *The X-ray Universe 2005*, ed. A. Wilson, *ESA SP*, 604, 201
- Schulz, N. S., Kallman, T. E., Galloway, D. K., & Brandt, W. N. 2008, *ApJ*, 672, 1091
- Senkbeil, C., & Sault, B. 2004, *The Astronomer's Telegram*, 302, 1
- Shirey, R. E., Bradt, H. V., & Levine, A. M. 1999a, *ApJ*, 517, 472
- Shirey, R. E., Levine, A. M., & Bradt, H. V. 1999b, *ApJ*, 524, 1048
- Soleri, P., Belloni, T., & Casella, P. 2006, in VI Microquasar Workshop: Microquasars and Beyond, 43
- Soleri, P., Tudose, V., Fender, R. P., & van der Klis, M. 2007, in Proc. Bursts, Pulses and Flickering: wide-field monitoring of the dynamic radio sky; 12–15 June, Kerastari, Tripolis, Greece, 37
- Soria, R., Pakull, M., Broderick, J., & Corbel, S. 2010, *MNRAS*, 409, 541
- Steehns, D., McClintock, J. E., Parsons, S. G., et al. 2013, *ApJ*, 768, 185
- Stubbings, R., & Pearce, A. 1999, *IAU Circ.*, 7253, 1
- Swank, J. 2004, *The Astronomer's Telegram*, 295, 1
- Tavani, M., Bulgarelli, A., Piano, G., et al. 2009, *Nature*, 462, 620
- Tennant, A. F., Fabian, A. C., & Shafer, R. A. 1986a, *MNRAS*, 221, 27P
- Tennant, A. F., Fabian, A. C., & Shafer, R. A. 1986b, *MNRAS*, 219, 871
- Trudolyubov, S. P. 2001, *ApJ*, 558, 276
- Tudose, V., Fender, R. P., Kaiser, C. R., et al. 2006, *MNRAS*, 372, 417
- Tudose, V., Fender, R. P., Tzioumis, A. K., Spencer, R. E., & van der Klis, M. 2008, *MNRAS*, 390, 447
- Uemura, M., Mennickent, R., Stubbings, R., et al. 2005, *Information Bulletin on Variable Stars*, 5626, 1
- Vadawale, S. V., Rao, A. R., & Chakrabarti, S. K. 2001, *A&A*, 372, 793
- van Oers, P., & Markoff, S. 2010, in *Jets at all Scales*, *Proc. IAU*, 6, 294
- van Paradijs, J., & McClintock, J. E. 1994, *A&A*, 290, 133
- Wijnands, R., & van der Klis, M. 2000, *ApJ*, 528, L93
- Zdziarski, A. A. 2014, *MNRAS*, 444, 1113
- Zdziarski, A. A., Grove, J. E., Poutanen, J., Rao, A. R., & Vadawale, S. V. 2001, *ApJ*, 554, L45
- Zdziarski, A. A., Lubinski, P., Gilfanov, M., & Revnitsev, M. 2003, *MNRAS*, 342, 355
- Zdziarski, A. A., Sikora, M., Dubus, G., et al. 2012, *MNRAS*, 421, 2956
- Zhang, W., Giles, A. B., Jahoda, K., et al. 1993, in *SPIE Conf. Ser.* 2006, eds. O. H. Siegmund, 324
- Ziolkowski, J. 2015, ArXiv e-prints [[arXiv:1509.02819](#)]
- <sup>1</sup> Centre for Space Research, North-West University, Potchefstroom 2520, South Africa
- <sup>2</sup> Universität Hamburg, Institut für Experimentalphysik, Luruper Chaussee 149, 22761 Hamburg, Germany
- <sup>3</sup> Max-Planck-Institut für Kernphysik, PO Box 103980, 69029 Heidelberg, Germany
- <sup>4</sup> Dublin Institute for Advanced Studies, 31 Fitzwilliam Place, Dublin 2, Ireland
- <sup>5</sup> National Academy of Sciences of the Republic of Armenia, Marshall Baghramian Avenue, 24, 0019 Yerevan, Republic of Armenia
- <sup>6</sup> Yerevan Physics Institute, 2 Alikhanian Brothers St., 375036 Yerevan, Armenia
- <sup>7</sup> Institut für Physik, Humboldt-Universität zu Berlin, Newtonstr. 15, 12489 Berlin, Germany
- <sup>8</sup> University of Namibia, Department of Physics, Private Bag 13301, Windhoek, Namibia
- <sup>9</sup> GRAPPA, Anton Pannekoek Institute for Astronomy, University of Amsterdam, Science Park 904, 1098 XH Amsterdam, The Netherlands
- <sup>10</sup> Department of Physics and Electrical Engineering, Linnaeus University, 351 95 Växjö, Sweden
- <sup>11</sup> Institut für Theoretische Physik, Lehrstuhl IV: Weltraum und Astrophysik, Ruhr-Universität Bochum, 44780 Bochum, Germany
- <sup>12</sup> GRAPPA, Anton Pannekoek Institute for Astronomy and Institute of High-Energy Physics, University of Amsterdam, Science Park 904, 1098 XH Amsterdam, The Netherlands
- <sup>13</sup> Institut für Astro- und Teilchenphysik, Leopold-Franzens-Universität Innsbruck, 6020 Innsbruck, Austria
- <sup>14</sup> School of Chemistry & Physics, University of Adelaide, 5005 Adelaide, Australia
- <sup>15</sup> LUTH, Observatoire de Paris, PSL Research University, CNRS, Université Paris Diderot, 5 Place Jules Janssen, 92190 Meudon, France
- <sup>16</sup> Sorbonne Universités, UPMC Université Paris 06, Université Paris Diderot, Sorbonne Paris Cité, CNRS, Laboratoire de Physique Nucléaire et de Hautes Energies (LPNHE), 4 place Jussieu, 75252 Paris Cedex 5, France
- <sup>17</sup> Laboratoire Univers et Particules de Montpellier, Université Montpellier, CNRS/IN2P3, CC 72, Place Eugène Bataillon, 34095 Montpellier Cedex 5, France
- <sup>18</sup> DSM/Irfu, CEA Saclay, 91191 Gif-Sur-Yvette Cedex, France
- <sup>19</sup> Astronomical Observatory, The University of Warsaw, Al. Ujazdowskie 4, 00-478 Warsaw, Poland
- <sup>20</sup> Aix Marseille Université, CNRS/IN2P3, CPPM UMR 7346, 13288 Marseille, France
- <sup>21</sup> Instytut Fizyki Jądrowej PAN, ul. Radzikowskiego 152, 31-342 Kraków, Poland
- <sup>22</sup> Funded by EU FP7 Marie Curie, grant agreement No. PIEF-GA-2012-332350,
- <sup>23</sup> School of Physics, University of the Witwatersrand, 1 Jan Smuts Avenue, Braamfontein, 2050 Johannesburg, South Africa
- <sup>24</sup> Laboratoire d'Annecy-le-Vieux de Physique des Particules, Université Savoie Mont-Blanc, CNRS/IN2P3, 74941 Annecy-le-Vieux, France
- <sup>25</sup> Landessternwarte, Universität Heidelberg, Königstuhl, 69117 Heidelberg, Germany
- <sup>26</sup> Université Bordeaux, CNRS/IN2P3, Centre d'Études Nucléaires de Bordeaux Gradignan, 33175 Gradignan, France
- <sup>27</sup> Oskar Klein Centre, Department of Physics, Stockholm University, Albanova University Center, 10691 Stockholm, Sweden
- <sup>28</sup> Wallenberg Academy Fellow
- <sup>29</sup> Institut für Astronomie und Astrophysik, Universität Tübingen, Sand 1, 72076 Tübingen, Germany
- <sup>30</sup> Laboratoire Leprince-Ringuet, École Polytechnique, CNRS/IN2P3, 91128 Palaiseau, France
- <sup>31</sup> APC, AstroParticule et Cosmologie, Université Paris Diderot, CNRS/IN2P3, CEA/Irfu, Observatoire de Paris, Sorbonne Paris Cité, 10, rue Alice Domon et Léonie Duquet, 75205 Paris Cedex 13, France
- <sup>32</sup> Univ. Grenoble Alpes, IPAG; CNRS, IPAG, 38000 Grenoble, France
- <sup>33</sup> Department of Physics and Astronomy, The University of Leicester, University Road, Leicester, LE1 7RH, UK
- <sup>34</sup> Nicolaus Copernicus Astronomical Center, ul. Bartycka 18, 00-716 Warsaw, Poland
- <sup>35</sup> Institut für Physik und Astronomie, Universität Potsdam, Karl-Liebknecht-Strasse 24/25, 14476 Potsdam, Germany
- <sup>36</sup> Universität Erlangen-Nürnberg, Physikalisches Institut, Erwin-Rommel-Str. 1, 91058 Erlangen, Germany
- <sup>37</sup> DESY, 15738 Zeuthen, Germany
- <sup>38</sup> Obserwatorium Astronomiczne, Uniwersytet Jagielloński, ul. Orła 171, 30-244 Kraków, Poland
- <sup>39</sup> Centre for Astronomy, Faculty of Physics, Astronomy and Informatics, Nicolaus Copernicus University, Grudziadzka 5, 87-100 Torun, Poland
- <sup>40</sup> Department of Physics, University of the Free State, PO Box 339, 9300 Bloemfontein, South Africa
- <sup>41</sup> Heisenberg Fellow (DFG), ITA Universität Heidelberg, 069120 Heidelberg, Germany
- <sup>42</sup> GRAPPA, Institute of High-Energy Physics, University of Amsterdam, Science Park 904, 1098 XH Amsterdam, The Netherlands
- <sup>43</sup> University of Durham, Department of Physics, South Road, Durham DH1 3LE, UK
- <sup>44</sup> Iowa State University, Ames, IA 50011, USA

## Appendix A: Modelling and determination of the system X-ray states

### A.1. GRS 1915+105

Figure A.1 shows the HID derived from the entire archival RXTE PCA data set for GRS 1915+105. Hardness is defined as the ratio of fluxes measured in the 2–9 keV and 9–20 keV bands, while intensity is defined as the sum of the band-limited fluxes in units of counts per second. The background has been subtracted and the light curves are sampled in 16 s intervals. These definitions are used consistently for the three HIDs presented in this paper. In the case of GRS 1915+105, the H.E.S.S. observation took place in a low-hard state (LHS; symbols for MJD 53 123–8 in top-left sector of Fig. A.1), in which compact jets are expected to be present and characterised by a potentially radio-loud  $\chi$  X-ray variability class (belonging to state C following the classification of Belloni et al. 2000). For comparison, the orange points in Fig. A.1 correspond with data obtained on 17 December 1997. These data were studied by Soleri et al. (2006) who associated them with a hard-intermediate state (HIMS) to soft-intermediate state (SIMS) transition.

The power density spectra shown in Fig. A.3 show the presence of low frequency QPOs: following the approach of Belloni et al. (2002), a Lorentzian decomposition of the observed power spectra was performed using two broad continuum components and several narrower QPO peaks. Crucially, the characteristic frequency ( $\nu_{\max} = \sqrt{\nu_0^2 + \Delta^2}$ , see Belloni et al. 2002) of the higher frequency continuum component never exceeds  $\sim 4$  Hz during our observations. This is far below the characteristic cut-off frequencies associated with previous observations of the radio-quiet  $\chi$  state (e.g. Trudolyubov 2001). Radio-quiet observations (Belloni et al. 1997; Trudolyubov 2001) exhibit significant band-limited white noise extending to high frequencies  $f \sim 60$ –80 Hz, while in radio-loud case such noise is either absent or exhibits an exponential cut-off at  $\sim 15$  Hz (Trudolyubov 2001). Consequently, the absence of band limited noise at high frequencies is consistent with a radio-loud state C.

Figure A.4 illustrates the spectral analysis performed for each GRS 1915+105 RXTE observation. The simple model described by Vadawale et al. (2001) has been adopted: a continuum model comprising a disk black-body (DISKBB<sup>4</sup>) component, a hybrid thermal and a non-thermal Comptonisation component (COMPST), and a separate power law (POWERLAW) to model the high-energy emission. Interstellar absorption was modelled using the WABS model in XSPEC with the equivalent hydrogen column fixed to a value of  $6 \times 10^{22} \text{ cm}^{-2}$  (Belloni et al. 1997; Markwardt et al. 1999b; Munro et al. 1999). A constant multiplicative factor was introduced to account for the normalisation of HEXTE relative to the PCA. The addition of a GAUSSIAN component with centroid energy  $E_{\text{Line}}$  fixed at 6.4 keV was found to significantly improve the resultant model fit.

As demonstrated by the reduced  $\chi^2$  values listed in Table A.1, the fitted model provides an adequate description of the RXTE data, and the derived model parameters correspond closely to those obtained by Vadawale et al. (2001) during earlier episodes of radio-loud  $\chi$ -state behaviour, supporting the attribution of this state to the epochs of H.E.S.S. observation. However, insufficient event statistics prevent the inference of robust conclusions regarding the origin of the X-rays that were

observed in this study. A more sophisticated and physically well-motivated model, describing an X-ray corona (EQPAIR from Coppi 2000) gives a similar goodness-of-fit, after accounting for a larger parameter count. Physically, the power-law component could result from Comptonisation by energetic electrons in a corona or could be generated by synchrotron radiation at the base of a jet. The former scenario is discussed in a number of papers (e.g. Zdziarski et al. 2003), while the latter was studied by van Oers & Markoff 2010 in the context of a similar plateau state of GRS1915+105. They applied a leptonic jet model (Markoff et al. 2005) to X-ray, IR, and radio data. Although their model provided statistically convincing broadband fits, this was only achievable when adopting extreme parameter values. The power law with  $\Gamma \simeq 2.7$  that was derived in this study (Table A.1) cannot be extrapolated down to UV band without generating an inconsistency in subsequently inferred bolometric luminosity. It should be interpreted as a phenomenological approximation of a high-energy tail, which itself might only be partially accounted for by SSC radiation.

A similar plateau state of GRS 1915+105 (October 1997) was studied by Klein-Wolt et al. (2002), who attributed the observed radio emission to quasi-continuous ejecta forming the compact jet.

In Fig. A.2, the 15 GHz radio surface brightness and the X-ray hardness and intensity corresponding with the epochs of H.E.S.S. observation are illustrated in a broader historical context (Pooley 2006)<sup>5</sup>. The H.E.S.S. observations started approximately one week before the end of a long radio-loud plateau and were triggered by a transient dip in radio flux whilst the plateau end was not yet reached. The plateau ended about two days after the last H.E.S.S. observation, followed by a radio and X-ray flare ten days later.

In summary, GRS 1915+105 remained in a radio-loud  $\chi$  state with steady, mildly relativistic jets at the time of H.E.S.S. observations without clear signs of a state transition.

### A.2. Cir X-1

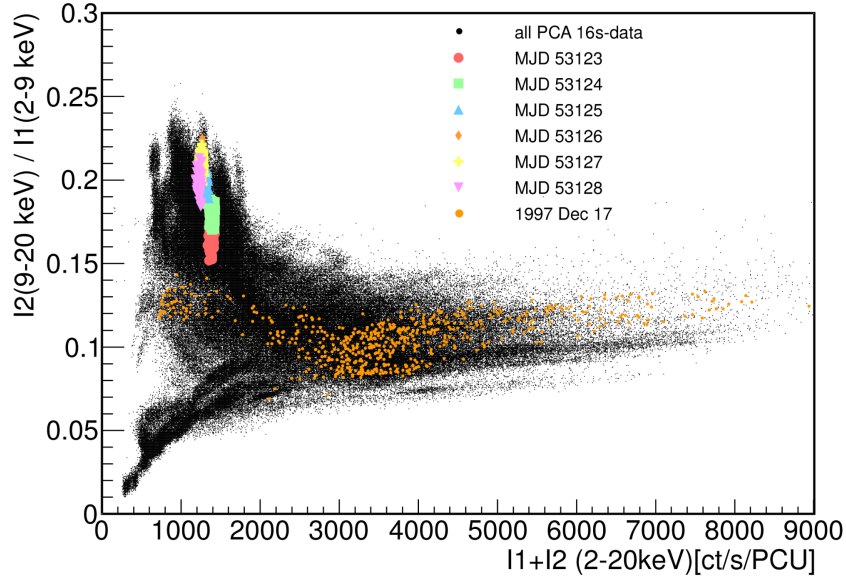
The HID for Cir X-1 is shown in Fig. A.5. An extensive study, examining ten days out of the 16.55 orbital period was performed by Shirey et al. (1999a) in 1997; the corresponding RXTE data are indicated with orange symbols in Fig. A.5. The study focused on the toroidally distributed data plotted in the lower right part of the HID. Shirey et al. (1999a), studied the spectral and temporal X-ray evolution of Cir X-1 along three distinct branches (horizontal, normal, flaring) in the HID. This evolution occurred during a half-day period, approximately one day after periastron and was repeated few days later. Such behaviour is typical of a “Z source”.

In Shirey et al. (1999a), the periastron passage corresponds to the data at low flux and hardness (dipping episode, lower-left part of the cycle). Data contemporaneous to the H.E.S.S. observations (MJD 53 174–6) are indicated by symbols and exhibit low X-ray intensity and hardness values. They span two days starting 19 h after the periastron, which coincides with the orbital range explored by Shirey et al. (1999a), but in a much fainter X-ray luminosity context.

Inspection of the 3–20 keV PCA spectra shown in Fig. A.6 reveals that the observed flux variability is accompanied by marked variations in spectral shape. For the third observation, individual spectra were extracted from the four regions (A to D) shown in Fig. 2 (bottom-right panel), segregated on

<sup>4</sup> <http://heasarc.gsfc.nasa.gov/xanadu/xspec/manual/XspecModels.html>

<sup>5</sup> <http://www.mrao.cam.ac.uk/~guy/>



**Fig. A.1.** Hardness-intensity diagram of GRS 1915+105 derived from the entire archival RXTE PCA data set. The temporal sampling is 16 s. Hardness is defined as the ratio of fluxes measured in the 2–9 keV and 9–20 keV bands, while intensity is defined as the sum of the band-limited fluxes in units of counts per second. Data corresponding to H.E.S.S. observations are highlighted using symbols to identify the individual days of observation. For comparison, the data corresponding to noteworthy events such as known flares observed by RXTE are also plotted (see e.g. Soleri et al. 2006).

**Table A.1.** XSPEC model components and best-fit parameters for GRS 1915+105.

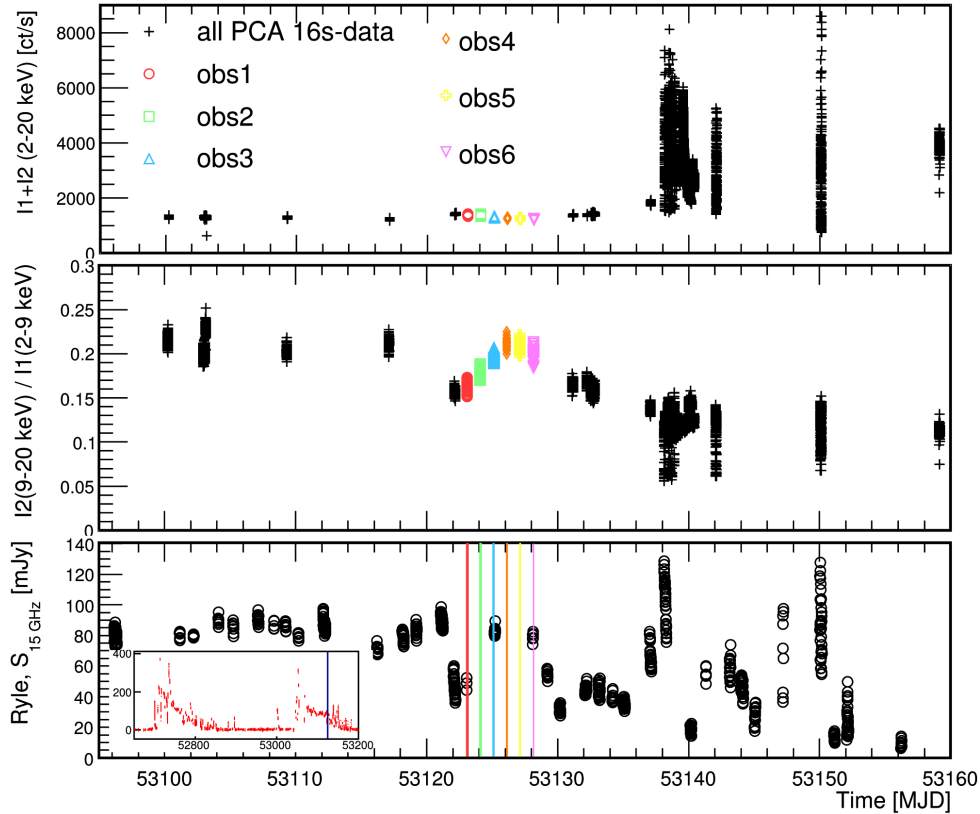
Component	Parameter	OBS 1	OBS 2	OBS 3
DISKBB	$T_{\text{in}}$ [keV]	$1.695^{+0.42}_{-0.59}$	$1.137^{+0.6}_{-0.3}$	$1.698^{+0.63}_{-0.77}$
DISKBB	Norm	$31.1^{+120}_{-17}$	$81.3^{+360}_{-78}$	$20.9^{+200}_{-16}$
COMPST	$kT_e$ [keV]	$4.195^{+2}_{-0.54}$	$5.057^{+1.1}_{-0.81}$	$4.460^{+0.54}_{-0.7}$
COMPST	$\tau$	$13.145_{-6.9}$	$7.801^{+3.7}_{-1.8}$	$10.959_{-4.7}$
POWERLAW	$\Gamma_{\text{phot}}$	$2.714^{+0.058}_{-0.86}$	$2.668^{+0.12}_{-0.15}$	$2.644^{+0.077}_{-0.82}$
GAUSSIAN	$E_{\text{Line}}$ [keV]	6.4*		
GAUSSIAN	$\sigma$ [keV]	$0.776^{+0.24}_{-0.29}$	$0.891^{+0.15}_{-0.17}$	$0.730^{+0.22}_{-0.24}$
GAUSSIAN	W [eV]	66.44	87.76	70.44
$\chi^2_{\nu}$ (NDF)		0.82 (77)	0.96 (78)	0.99 (80)
Component	Parameter	OBS 4	OBS 5	OBS 6
DISKBB	$T_{\text{in}}$ [keV]	$1.350^{+0.63}_{-0.42}$	$1.415^{+0.63}_{-0.51}$	$1.713^{+0.51}_{-0.55}$
DISKBB	Norm	$30.8^{+140}_{-28}$	$23.3^{+110}_{-23}$	$15.4^{+28}_{-13}$
COMPST	$kT_e$ [keV]	$5.130^{+0.77}_{-0.69}$	$4.888^{+0.73}_{-0.69}$	$5.118^{+0.83}_{-0.82}$
COMPST	$\tau$	$8.516^{+4.4}_{-1.6}$	$8.870^{+6.1}_{-1.7}$	$9.028^{+14}_{-1.9}$
POWERLAW	$\Gamma_{\text{phot}}$	$2.503^{+0.12}_{-0.38}$	$2.521^{+0.026}_{-0.27}$	$2.441^{+0.13}_{-0.37}$
GAUSSIAN	$E_{\text{Line}}$ [keV]	6.4*		
GAUSSIAN	$\sigma$ [keV]	$0.894^{+0.16}_{-0.19}$	$0.902^{+0.16}_{-0.18}$	$0.928^{+0.19}_{-0.24}$
GAUSSIAN	W [eV]	91.15	91.78	86.93
$\chi^2_{\nu}$ (NDF)		1.12 (80)	1.19 (83)	0.82 (80)

**Notes.** As discussed in the text, an additional WABS component (with equivalent hydrogen column density fixed to  $N_{\text{H}} = 6 \times 10^{22} \text{ cm}^{-2}$ ) was used to model the effects of interstellar absorption. The parameter errors correspond to a  $\Delta\chi^2$  of 2.71. Frozen parameters are indicated by \*.

the basis of average 2–20 keV count rates. Fitting of the spectral data from the third observation employed a similar approach to that of Shirey et al. (1999b) with the unabsorbed continuum modelled using a disk black-body component (DISKBB in XSPEC) at low energies in combination with a single temperature black body (BBDY) that dominates above ~15 keV.

Previous observations of Cir X-1 during periastron dips (e.g. Shirey et al. 1999b; Schulz et al. 2008) reveal the evidence of strong, complex, and variable intrinsic X-ray absorption. Consequently, diagnosis of the system behaviour during the third RXTE observation is critically dependent upon whether the observed variability represents a genuine change in the underlying continuum emission or is simply an artefact of varying ab-





**Fig. A.2.** Evolution of GRS 1915+105 before and after H.E.S.S. observations. RXTE PCA intensity and hardness (defined in the caption of Fig. A.1) are plotted on the *top and middle panels*, respectively. The *bottom panel* presents contemporaneous 15 GHz radio data obtained using the Ryle Telescope (Pooley 2006). Long-term monitoring data in the 15 GHz radio band are illustrated in the *inset*. Coloured markers and lines indicate the H.E.S.S. observation epochs.

**Table A.2.** Spectral parameters for Cir X-1 during OBS 3 corresponding to the orbital phase interval  $0.1718 \leq \phi \leq 0.1725$  (according to the ephemeris of Nicolson 2007).

Component	Parameter	OBS 3A	OBS 3B	OBS 3C	OBS 3D
DiskBB	$T_{\text{in}}$ [keV]	$1.059^{+0.03}_{-0.04}$	Joint fit		
	Norm	$(1.914^{+0.63}_{-0.44}) \times 10^2$	Joint fit		
BBODY	$kT$ [keV]	$2.954^{+0.67}_{-0.47}$	Joint fit		
	Norm	$(1.126^{+0.24}_{-0.18}) \times 10^{-3}$	$(9.373^{+2.09}_{-1.70}) \times 10^{-4}$	$(7.646^{+2.01}_{-1.62}) \times 10^{-4}$	$(4.992^{+2.61}_{-2.44}) \times 10^{-4}$
PCFABS	$N_{\text{H}}$ [ $\times 10^{22}$ ]	$(2.303^{+0.33}_{-0.34}) \times 10^1$	$(2.880^{+0.32}_{-0.32}) \times 10^1$	$(4.606^{+0.29}_{-0.29}) \times 10^1$	$(7.998^{+0.51}_{-0.48}) \times 10^1$
	CvrFract	$(8.630^{+0.22}_{-0.20}) \times 10^{-1}$	$(8.411^{+0.19}_{-0.20}) \times 10^{-1}$	$(8.726^{+0.15}_{-0.16}) \times 10^{-1}$	$(8.852^{+0.14}_{-0.15}) \times 10^{-1}$
$\chi^2_{\nu}$ (NDF)		1.27 (145)	Joint fit		
Model flux	[erg cm $^{-2}$ s $^{-1}$ ]	$6.121 \times 10^{-10}$	$5.512 \times 10^{-10}$	$3.822 \times 10^{-10}$	$2.515 \times 10^{-10}$

**Notes.** XSPEC model components, best-fit parameters, and 3–20 keV model fluxes are shown for the four separate sub-intervals illustrated in Fig. 2 in order of decreasing model flux. As discussed in the text, an additional WABS component (with equivalent hydrogen column density fixed to  $N_{\text{H}} = 1.59 \times 10^{22}$  cm $^{-2}$ ) was used to model the effects of interstellar absorption. Jointly fitted parameters assume the values quoted for OBS 3A. The parameter errors correspond to a  $\Delta\chi^2$  of 2.71.

sorption. Accordingly, two components are used to separately simulate intrinsic and extrinsic X-ray absorption characteristics. The bipartite intrinsic absorption is treated using a partial covering model (PCFABS), while a simple photoelectric model (WABS) simulates the absorbing effect of the interstellar medium. Adopting a weighted average of the neutral hydrogen data of Kalberla et al. (2005) calculated using the nH ftool, a fixed effective hydrogen column with  $N_{\text{H}} = 1.59 \times 10^{22}$  cm $^{-2}$  was assumed for the WABS component. This assumption is consistent with an

estimate of the surrounding interstellar medium density used by Tudose et al. (2006) to model the evolution of the radio nebula of Cir X-1.

In order to constrain the origin of the observed spectral variability, a joint fit was performed using the complete best-fitting model. Initially, the continuum and extrinsic absorption components (DiskBB, BBODY, WABS) were constrained to be equal for all individual spectra, while the component related to intrinsic absorption (PCFABS) was allowed to vary

**Table A.3.** XSPEC model components, best-fit parameters, and 3–20 keV model fluxes for Cir X-1 during OBS 1 and OBS 2 corresponding to the orbital phase intervals  $0.0486 \leq \phi \leq 0.0498$  and  $0.1104 \leq \phi \leq 0.1112$ , respectively (according to the ephemeris of [Nicolson 2007](#)).

Component	Parameter	OBS 1 ( $0.0486 \leq \phi \leq 0.0498$ )	OBS 2 ( $0.1104 \leq \phi \leq 0.1112$ )
DISKBB	$T_{\text{in}}$ [keV]	$1.355^{+0.18}_{-0.08}$	1.059*
	Norm	$(3.798^{+3.42}_{-3.64}) \times 10^1$	$(1.914) \times 10^{12}$ *
BBODY	$kT$ [keV]	–	$2.465^{+0.50}_{-0.39}$
	Norm	–	$(7.577^{+1.90}_{-1.22}) \times 10^{-4}$
PCFABS	$N_{\text{H}}$ [ $\times 10^{22}$ ]	$(1.353^{+0.44}_{-0.22}) \times 10^2$	$(9.545^{+0.25}_{-0.22}) \times 10^1$
	CvrFract	$(8.292^{+0.87}_{-2.01}) \times 10^{-1}$	$(9.191^{+0.01}_{-0.01}) \times 10^{-1}$
GAUSSIAN	$E_{\text{Line}}$ [keV]	$6.696^{+0.09}_{-0.08}$	–
	$\sigma$ [keV]	0.1 <sup>†</sup>	–
	Norm	$(1.435^{+0.36}_{-0.33}) \times 10^{-3}$	–
$\chi^2_{\nu}$ (NDF)		1.07 (34)	1.22 (36)
Model flux	[erg cm <sup>-2</sup> s <sup>-1</sup> ]	$2.722 \times 10^{-10}$	$1.912 \times 10^{-10}$

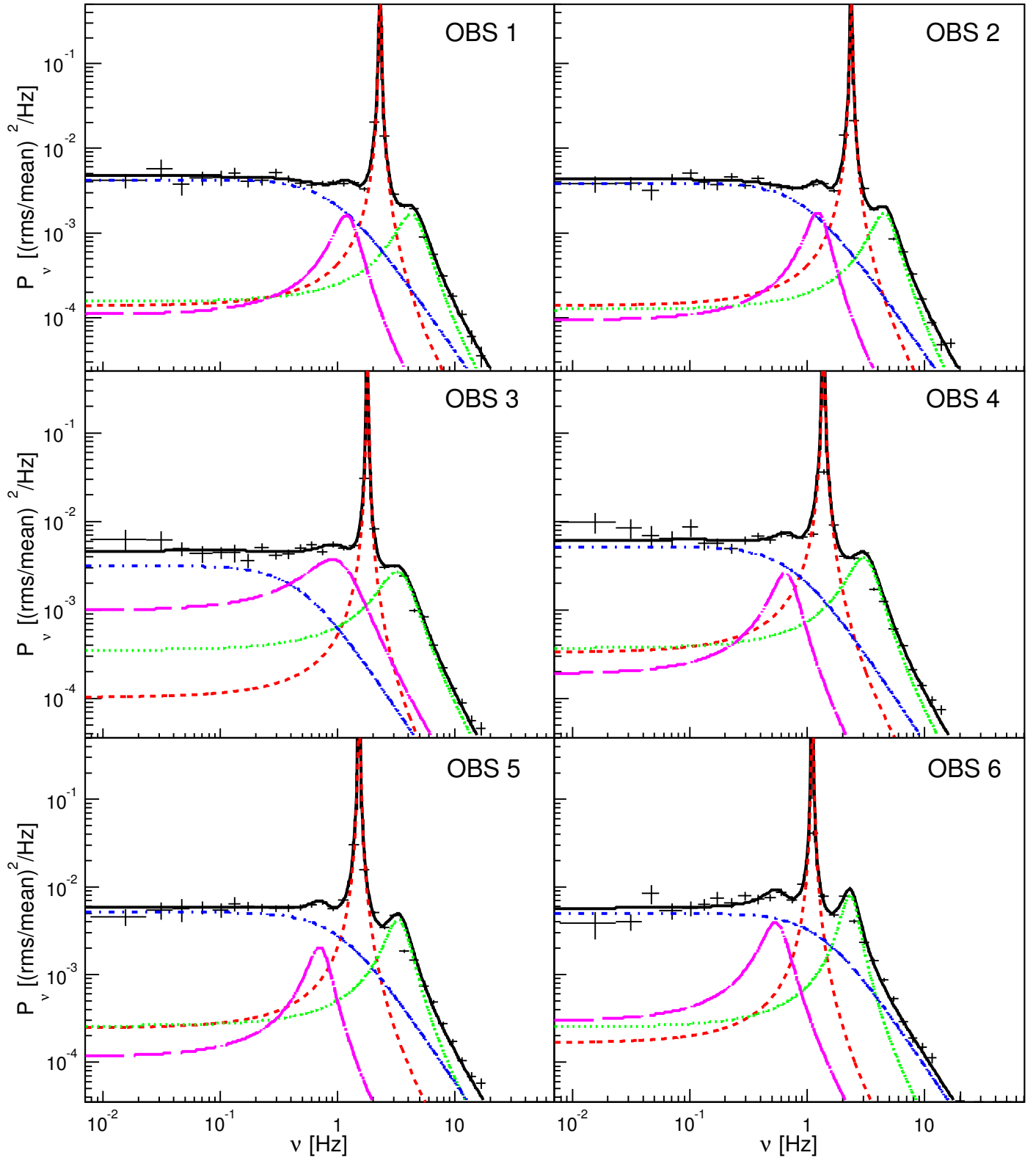
**Notes.** As discussed in the text, an additional  $W_{\text{ABS}}$  component (with equivalent hydrogen column density fixed to  $N_{\text{H}} = 1.59 \times 10^{22}$  cm<sup>-2</sup>) was used to model the effects of interstellar absorption. Parameters marked by \* are fixed to the best-fitting values from the third observation (see [Table A.2](#)). The value of the GAUSSIAN  $\sigma$  parameter (marked by a † symbol) was also fixed. The parameter errors correspond to a  $\Delta\chi^2$  of 2.71.

independently. Although this model provides a reasonable fit to the observational data ( $\chi^2_{\nu} = 1.38$ ), allowing the normalisation of the BBODY component to vary between observations improves the fit quality somewhat, yielding  $\chi^2_{\nu} = 1.27$ . The parameters that result from fitting this more relaxed model are listed in [Table A.2](#). A statistical comparison of the alternative model fits using the F test yields a  $\sim 1\%$  probability that the observed improvement in fit quality would be obtained even if the more restrictive model was correct. This marginal evidence for variation of the BBODY component normalisation might indicate rapid fluctuations of the X-ray continuum above  $\sim 10$  keV. However, the available data cannot exclude an alternative scenario in which apparent changes in the fitted BBODY parameters arise purely from imperfect modelling of substantial variations in the intrinsic X-ray absorption with no requirement for genuine evolution of the underlying continuum.

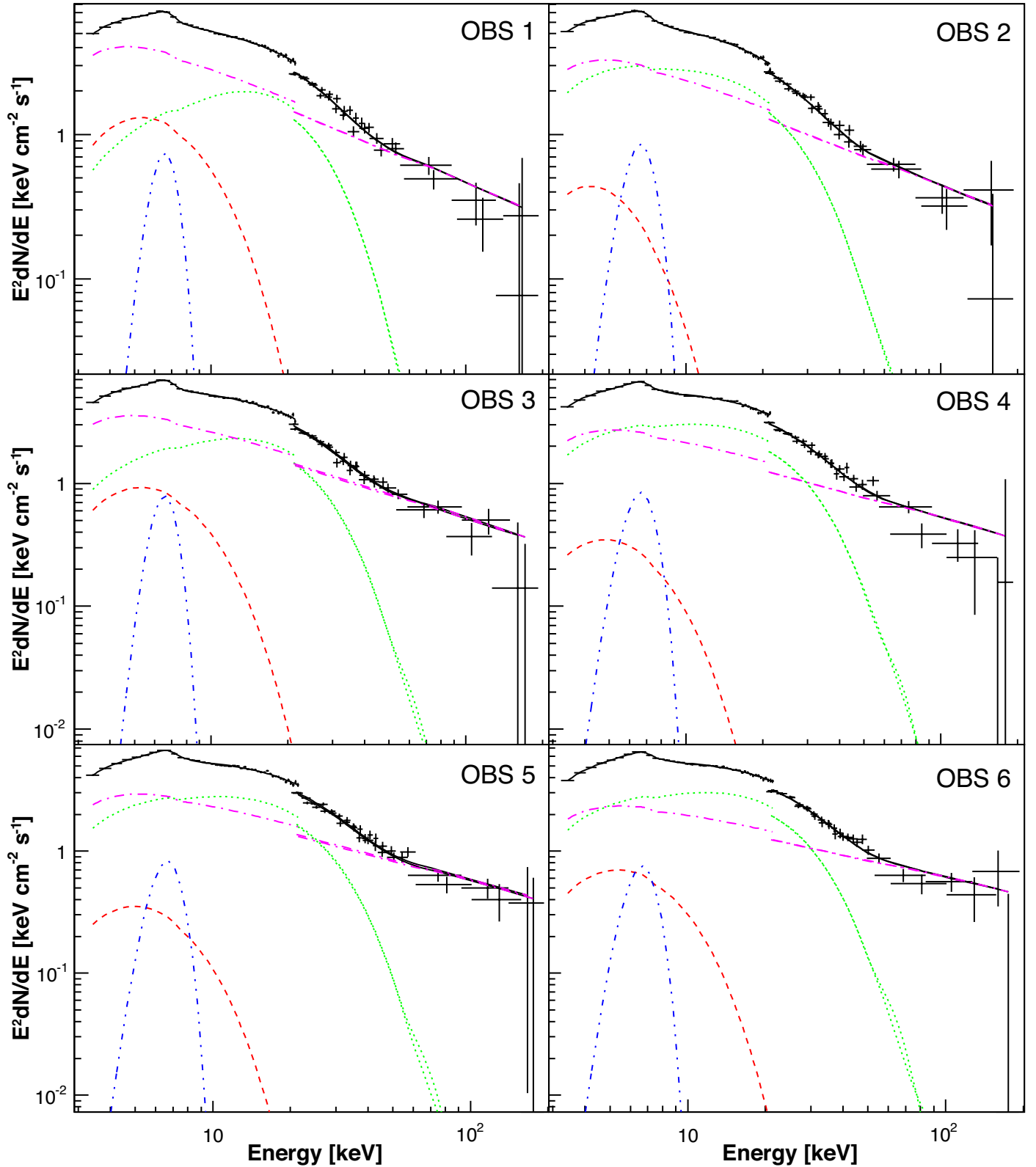
[Table A.3](#) lists the parameters of the spectral fits obtained from the first and second observations. A similar continuum model to that obtained from the third observation also provides a good fit ( $\chi^2_{\nu} = 1.22$ ) to the spectrum obtained during the second observation. In contrast, the spectrum obtained during the first

observation is more appropriately described by a single, heavily absorbed disk black-body component with large correlated residuals around  $\sim 6.5$  keV statistically favouring the addition of a GAUSSIAN line component. This continuum variability is consistent with the results of [Shirey et al. \(1999a\)](#) who found that significant variation of the continuum parameters could occur on timescales of a few hours.

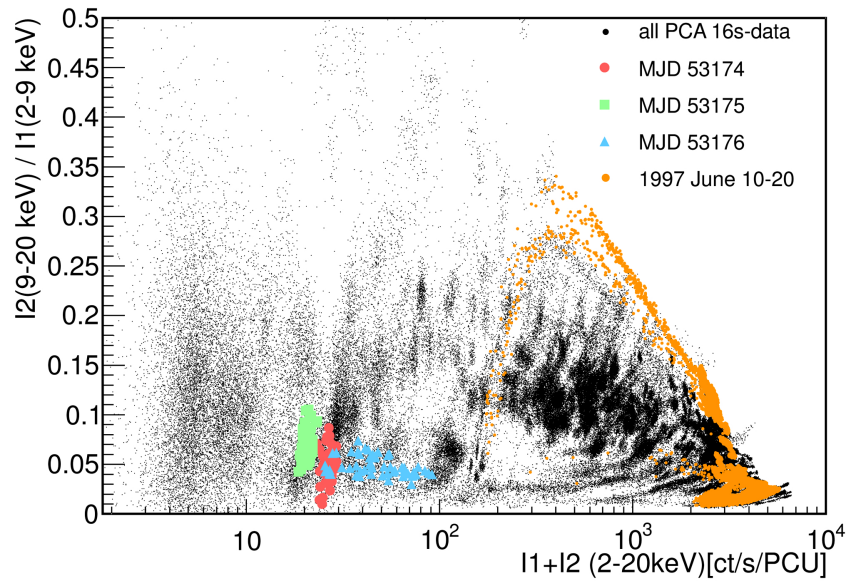
Overall, the RXTE data reinforce the accepted paradigm of enhanced mass transfer during the periastron passage of the compact primary with the strong and variable intrinsic absorption attributed to obscuration by a turbulent accretion flow (see e.g. [Oosterbroek et al. 1995](#); [Murdin et al. 1980](#); [Iaria et al. 2001](#)). A marked disparity between best-fitting model components and parameters of the first and second observations implies a dramatic evolution of the local radiative environment. A  $\sim 30\%$  decrease in continuum luminosity accompanied by a similar reduction of the intrinsic absorption column suggests a significant decrease in the mass transfer rate. Subsequent fluctuation in the inferred magnitude of the absorption column during the third observation is indicative of dispersion or reorganisation of the recently accreted material.



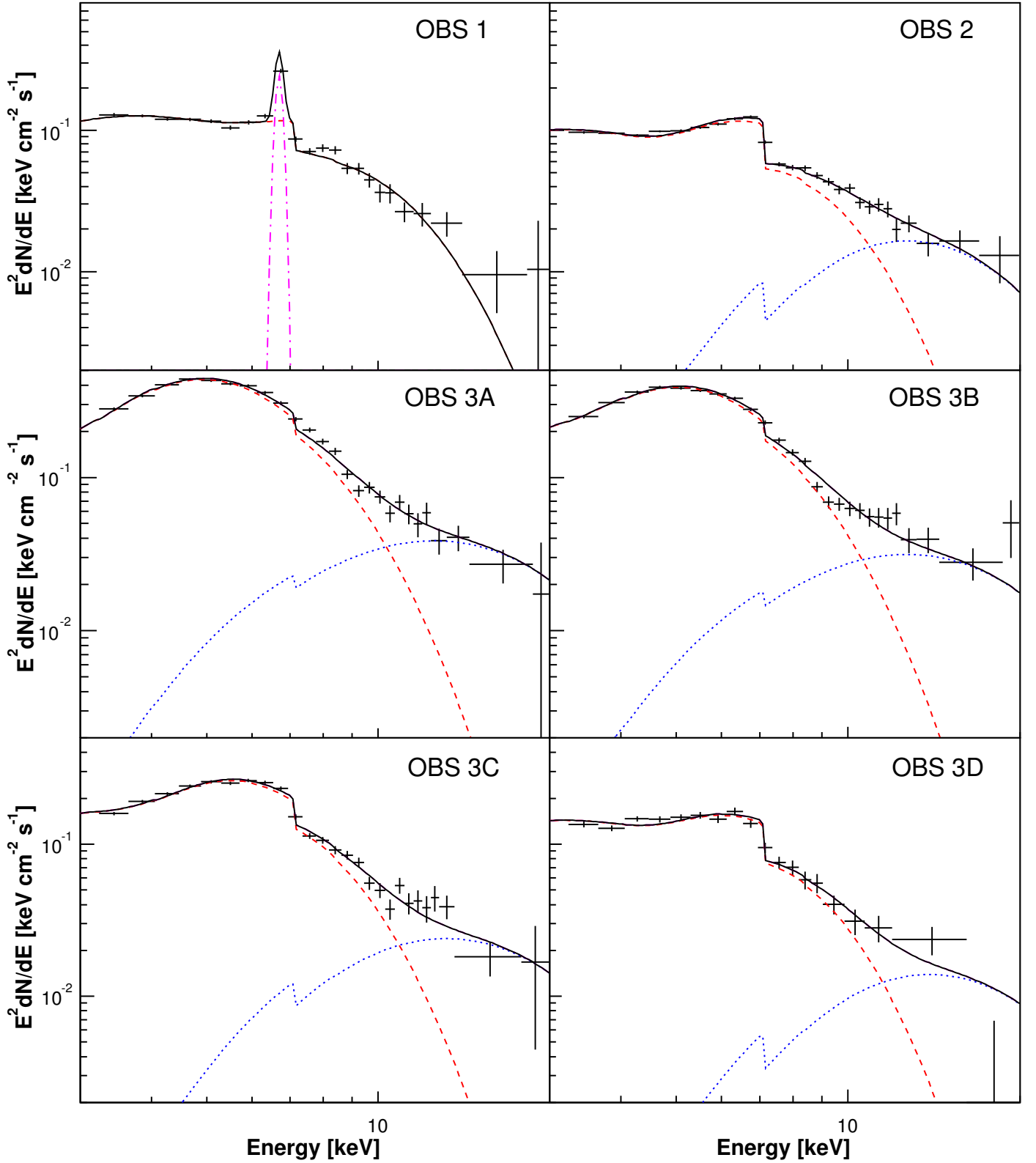
**Fig. A.3.** X-ray power density spectra (PDS) corresponding to the six RXTE observations of GRS 1915+105. The PDS were fitted using a superposition of Lorentzian functions comprising two broad continuum components (blue dot-dashed and green dotted curves) and several narrow QPO peaks (remaining curves). For all six observations, the derived properties of higher frequency continuum component are consistent with the radio-loud  $\chi$  state.



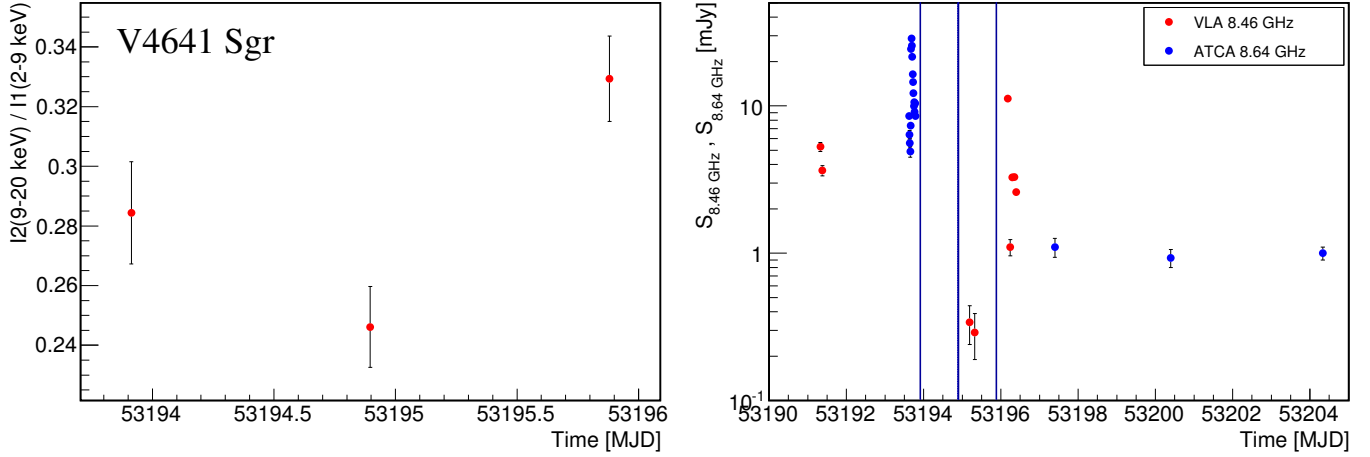
**Fig. A.4.** Unfolded RXTE 3–200 keV X-ray spectra of GRS 1915+105 showing the individual XSPEC model components: DiskBB (red dashes), COMPST (green dots), POWERLAW (magenta dot-dashed), GAUSSIAN (blue double-dot-dashed), and the total spectrum (black).



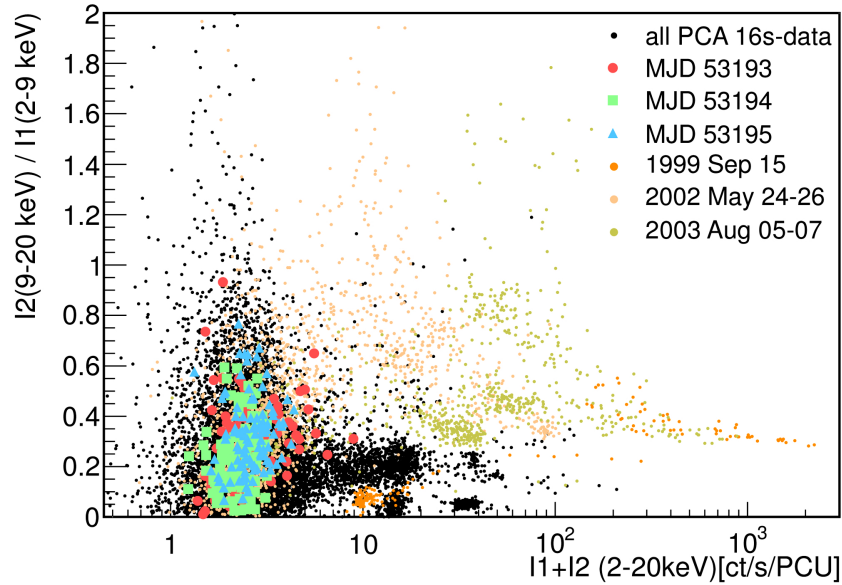
**Fig. A.5.** Hardness-intensity diagram derived from the entire archival RXTE PCA data set for Circinus X-1. Intensity and hardness are defined in the caption of Fig. A.1. Coloured markers indicate data that correspond with the H.E.S.S. observation epochs and historically noteworthy episodes of flaring activity (e.g. [Shirey et al. 1999a](#)).



**Fig. A.6.** Unfolded 3–20 keV RXTE X-ray spectra of Cir X-1 for the first and second observations (*top two panels*), and the four sub-intervals of the third observation (*bottom four panels*). The solid black curves illustrate the total spectral model, while the individual components are represented as follows: DISKBB (red dashed), BBODY (blue dotted), GAUSSIAN (pink dot-dashed lines).



**Fig. A.7.** *Left:* hardness (ratio of bands 9–20 keV/2–9 keV) computed from RXTE-PCA data for the three observations of V4641 Sgr. Each point is the mean value of hardness and the error bar represents the standard error on the mean. *Right:* radio data for V4641 Sgr, from ATCA and VLA (Rupen et al. 2004b,a; Senkbeil & Sault 2004). RXTE-PCA and H.E.S.S. observation times are indicated by blue shaded bands.



**Fig. A.8.** Hardness-Intensity diagram derived from the entire archival RXTE PCA data set for V4641 Sgr. Intensity and Hardness are defined in the caption of Fig. A.1. Coloured markers indicate data that correspond with the H.E.S.S. observation epochs, as well as historically noteworthy episodes of flaring activity (e.g. Wijnands & van der Klis 2000).