

THE UNIVERSITY OF ADELAIDE

STRATIGRAPHIC INVESTIGATIONS OF  
TERTIARY SEQUENCES, WESTERN MURRAY  
BASIN, SOUTH AUSTRALIA.

S.D. Giles

Honours Thesis  
1972

STRATIGRAPHIC INVESTIGATIONS OF TERTIARY SEQUENCES,

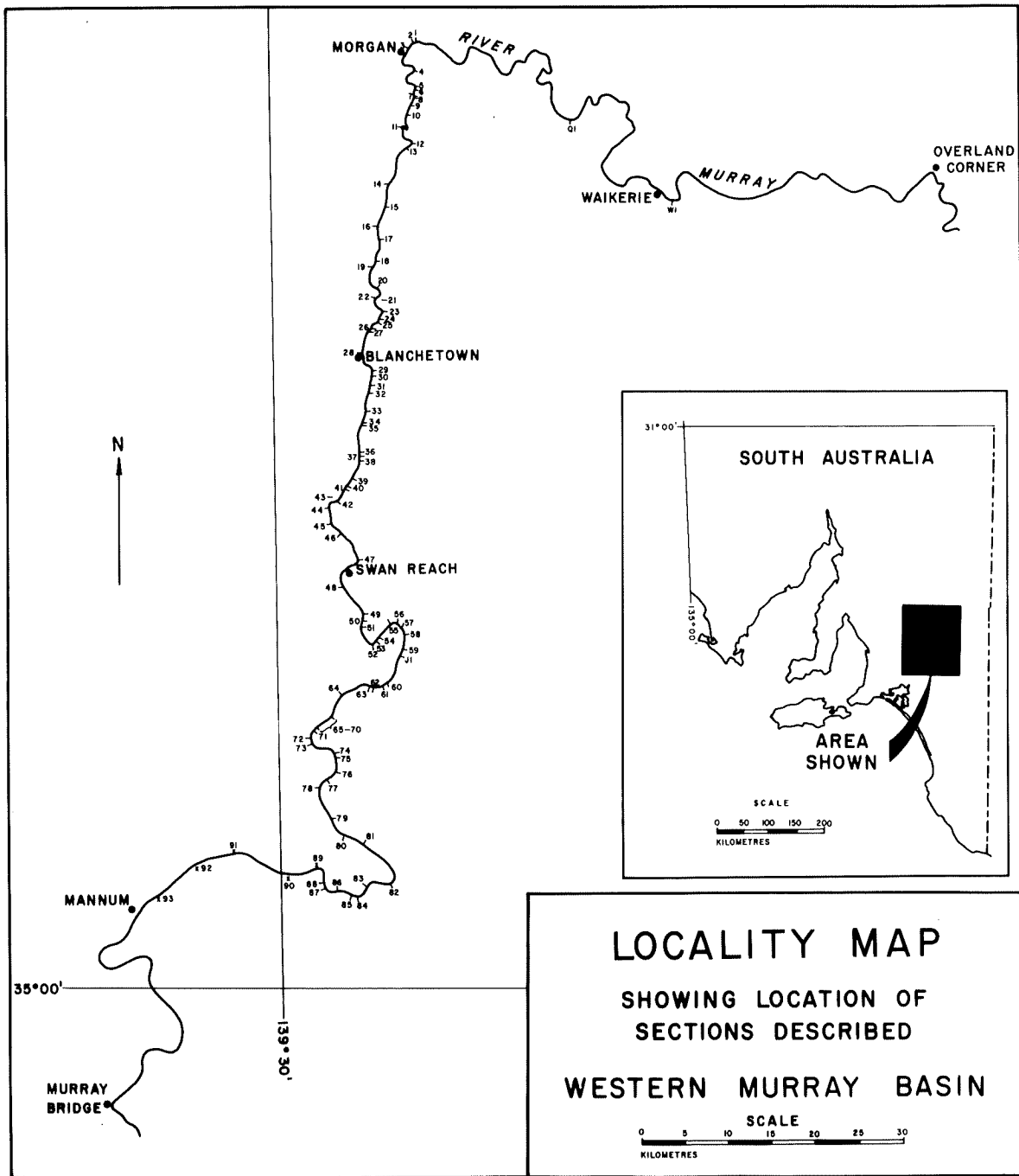
WESTERN MURRAY BASIN,

SOUTH AUSTRALIA.

Stephen D. Giles

Submitted to the Department of Geology and Mineralogy,  
University of Adelaide, as partial fulfilment of the  
requirements of the course in Honours Geology.

1972.



C O N T E N T S

	<u>Page No.</u>
Locality Map of sections described	Frontispiece
Abstract	1
INTRODUCTION	2
Investigational History	2
Acknowledgements	3
GEOLOGICAL PERSPECTIVE	4
I. Basement	4
II. Tertiary	5
Renmark Beds	5
Buccleuch Beds	6
Ettrick Formation	7
Mannum Formation	7
Finniss Clay	8
Morgan Limestone	8
Pata Limestone	8
Bookpurnong Beds	9
Loxton Sands	9
Norwest Bend Formation	9
Parilla Sands	9
Pleistocene to Recent units	10
STRATIGRAPHY	11
I. Mannum Formation	12
Previous work	12
Lithology	13
Palaeontology	13
Hard grounds	14
Environment	15
II. Finniss Clay	15
III. Morgan Limestone	17
Previous work	17
(a) <u>lower member</u>	17
Boundary conditions	17
Lithology	18
Palaeontology	19
Environment	20
The Batesfordian Stage	20

(b) <u>Cadell Marl</u>	21
Introduction and boundary conditions	21
Lithology	21
Palaeontology	22
Biostratigraphy	23
Environment	24
(c) <u>Cross-bedded member</u>	25
Introduction	25
Lithology	26
Palaeontology	26
Environment	26
(d) <u>upper member</u>	27
Lateral extent	27
Lithology and palaeontology	27
Environment	28
IV. <u>Norwest Bend Formation</u>	28
Previous work	28
Lithology and palaeontology	29
Environment	30
CONCLUSIONS	31
BIBLIOGRAPHY	34
Plate 1	
Plate 2	
APPENDIX I	Pocket
Measured sections.	
APPENDIX II.	A1
Methods	
Fig. 1 - Locality Map	following p.3
Fig. 2 - Micropalaeontology and Lithostratigraphy	following p.4
Fig. 3 - Lithological correlations	Pocket
Fig. 3a - Interpretative correlation	following p.10
Fig. 4 - Biostratigraphic ranges, section 44	following p.12
Fig. 5 - Biofacies chart, section 7 (Morgan Limestone type section)	following p.17
Fig. 6 - Biofacies chart, section 2	following p.17
Fig. 7 - Biofacies chart, section W1.	following p.21

STRATIGRAPHIC INVESTIGATIONS OF TERTIARY SEQUENCES,  
WESTERN MURRAY BASIN,  
SOUTH AUSTRALIA.

A B S T R A C T

In an attempt to improve the understanding of the biostratigraphy, sedimentology and palaeoecology of Tertiary sequences in the western Murray Basin, sections are described from cliff outcrop surrounding the lower River Murray. The relation of the upper boundary of Finmiss Clay (Miocene) at its stratotype, to the overlying Morgan Limestone (Miocene), examined with respect to other occurrences in the basin, is questioned. The significance of the Batesfordian Stage, as known in the Murray Basin, is examined biostratigraphically. The Cadell Marl is reinterpreted as a shallow water deposit, and a cross-bedded member of the Morgan Limestone, representing tidal sediments, is described for the first time. Certain sedimentary cycles inferred from Tertiary strata are correlated with the Otway Basin.

a poor abstract