

Z. Y. Ong, J. R. Gugusheff and B. S. Muhlhausler

Perinatal overnutrition and the programming of food preferences: pathways and mechanisms

Journal of Developmental Origins of Health and Disease, 2012; 3(5):299-308

© Cambridge University Press 2012

Originally Published at: <http://dx.doi.org/10.1017/S204017441200030X>**PERMISSIONS**<https://www.cambridge.org/core/services/open-access-policies/open-access-journals/green-open-access-policy-for-journals>

Green OA applies to all our journal articles, but it is primarily designed to support OA for articles that are otherwise only available by subscription or other payment. For that reason, we are more restrictive in what we allow under Green OA in comparison with Gold OA:

- The final, published version of the article **cannot** be made Green OA ([see below](#)).
- The Green OA version of the article is made available to readers for private research and study only ([see also Information for repositories, below](#)). We do not allow Green OA articles to be made available under Creative Commons licences.

Funder policies vary in which version of an article can be made Green OA. We use the following definitions (adapted from the [National Information Standards Organization – NISO](#)):

What can be archived and when:

	Personal web page	Department or institutional repository	Non-commercial subject repository	Commercial repository or social media site
SMUR	At any time	At any time	At any time	At any time
AM	On acceptance	Either: 6 months after publication <i>(for science, technical and medical journals)</i> On acceptance <i>(for humanities and social science journals)</i>	Either: 6 months after publication <i>(for science, technical and medical journals)</i> On acceptance <i>(for humanities and social science journals)</i>	Abstract only plus link to VoR on cambridge.org
VoR	Abstract only plus link to VoR on cambridge.org	Abstract only plus link to VoR on cambridge.org	Abstract only plus link to VoR on cambridge.org	Abstract only plus link to VoR on cambridge.org

Exceptions

Some of our journals do not follow our standard Green archiving policy. Please check the relevant journal's individual policy [here](#).

8 December 2016<http://hdl.handle.net/2440/74822>

Ong et al.

Maternal overnutrition and offspring food choices

Perinatal overnutrition and the programming of food preferences: pathways and mechanisms

ZY Ong ^{1,2*}, JR Gugusheff ^{2*}, BS Muhlhausler ^{1,2}

¹ Sansom Institute for Health Research, School of Pharmacy and Medical Science, University of South Australia, Adelaide 5001, South Australia, Australia

² FOODplus Research Centre, School of Agriculture Food and Wine, The University of Adelaide, Adelaide 5064, South Australia, Australia

* These authors contributed equally to this work

Short Title: Maternal overnutrition and offspring food choices

Please address all correspondence to:

Dr Beverly Muhlhausler

FOODplus Research Centre

School of Agriculture Food and Wine

The University of Adelaide

Adelaide 5064

Australia

Phone +61 8 8313 0848

Fax: +61 8 8303 7135

Email: beverly.muhlhausler@adelaide.edu.au

Abstract

One of the major contributing factors to the continuous rise in obesity rates is the increase in caloric intake, which is driven to a large extent by the ease of access and availability of palatable high-fat, high-sugar 'junk foods'. It is also clear that some individuals are more likely to overindulge in these foods than others; however, the factors which determine an individual's susceptibility towards the overconsumption of palatable foods are not well understood. There is growing evidence that an increased preference for these foods may have its origins early in life. Recent work from our group and others has reported that *in utero* and early life exposure to these palatable foods in rodents increased the offspring's preference towards foods high in fat and sugar. One of the potential mechanisms underlying the programming of food preferences is the altered development of the mesolimbic reward system, a system which plays an important role in driving palatable food intake in adults. The aim of this review is to explore the current knowledge of the programming of food preferences, a relatively new and emerging area in the DOHAD field, with a particular focus on maternal overnutrition, the development of the mesolimbic reward system and the biological mechanisms which may account for the early origins of an increased preference for palatable foods.

Key words: reward, dopamine, opioid, programming

Introduction

According to the World Health Organisation (WHO), obesity rates have doubled since 1980, and obesity is now a major public health issue in both developed and developing nations.¹ Whilst there are many factors contributing to this obesity epidemic, one of the major driving forces has been the increased availability and consumption of high-fat, high-sugar foods ('palatable' or 'junk foods') over this time.¹⁻³ It is also clear, however, that some individuals are more likely to overindulge in these high-fat/high-sugar foods than others, and human studies have consistently reported that overweight and obese individuals exhibit a higher preference for these palatable foods compared to lean individuals.³⁻⁶ Given the importance of an increased preference for high-fat, high-sugar foods for an individual's susceptibility to obesity in a society where these foods are readily available, understanding the biological mechanisms which underlie an increased preference for palatable foods has become an important area of research.

Whilst these mechanisms are still poorly understood, there is growing evidence to suggest that food preferences can have their origins early in life, and studies in both rodents and humans have reported associations between exposure to excess fat and/or sugar before birth or in early infancy and an increased preference for palatable foods in the offspring.⁷⁻⁸ One of the proposed mechanisms for the programming of food preferences involves the mesolimbic reward system in the brain which includes the nucleus accumbens (NAc) in the forebrain and ventral tegmental area (VTA) in the midbrain. These brain areas have been shown to be altered following acute and chronic high-fat, high-sugar intake in adult rodents, in a way analogous to drugs of abuse.⁹⁻¹¹ This suggests that the propensity of an individual to overconsume palatable foods could be a result of altered function of these central reward systems following exposure to an inappropriate nutrient supply before birth and in early postnatal life.

Ong et al.

Maternal overnutrition and offspring food choices

This review will explore the programming of food choices in the offspring, with a particular focus on maternal overnutrition and recent studies which have attempted to determine the underlying mechanisms involved, and will present a summary of our current understanding of the critical periods in the development of the reward circuitry during which permanent alterations in the function of this pathway could be established.

Palatable food intake and the mesolimbic reward system

It is now well-recognised that the drive to consume energy dense, nutrient poor junk foods in excess of caloric requirements has a biological basis, and that these foods have the capacity to activate central reward pathways in the brain in a similar manner to alcohol and drugs of abuse.¹²⁻¹³ The key systems involved in mediating this effect are the dopaminergic and opioid signalling systems within the mesolimbic reward system.

The activation of dopamine and opioid signalling begins in the VTA, in which the cell bodies of dopaminergic neurons are located. Rewarding stimuli activate the reward system by binding to specific receptors located on dopamine neurons in the VTA. Activation of these systems by rewarding stimuli also promotes the release of endogenous opioids, which block the release of gamma-aminobutyric acid (GABA) from interneurons in the VTA that normally inhibit dopamine release.¹⁴ The inhibition of GABA release by opioids disinhibits dopaminergic neurons and leads to an increase in dopamine synthesis in the VTA. These dopaminergic neurons project to the NAc where dopamine is released.¹⁴ Termination of dopamine signalling occurs through active reuptake of dopamine by dopamine active transporters (DAT).¹⁵ Opioids also bind directly to their receptors located within the NAc to potentiate reward signalling in this region of the mesolimbic system. Both the direct and indirect actions of opioids, together with the activation of dopamine neurons, create the pleasurable feeling or 'high' associated with the consumption of palatable foods, which is considered to be responsible for driving the excess consumption of palatable, high-fat, high-sugar foods compared to non-palatable foods

(**Figure-1**).

The apparent difficulty that some individuals experience in resisting junk foods has raised the question of what determines the susceptibility to overindulging in high-fat/high-sugar foods in

an individual, and whether differences within the mesolimbic reward system play a role. Whilst this is still not fully understood, there is now evidence that food preferences can be programmed very early in life and are determined, at least in part, by nutritional exposures which occur before birth and in early infancy.

Programming of food preferences

A [world-wide](#) series of epidemiological and experimental animal studies have demonstrated that exposure to either an inappropriately low or inappropriately high supply of nutrients *in utero* is associated with an increased risk of obesity later in life.¹⁶⁻¹⁹ Whilst early studies in the field of developmental programming focused primarily on the long term health impacts of exposure to a reduced nutrient supply before birth, the increase in the prevalence of overweight, obesity and diabetes during pregnancy has led to an increased focus on the effects of being exposed to an elevated supply of nutrients before birth on metabolic health of the offspring. In humans, clinical and epidemiological studies have consistently demonstrated that infants born to women who are overweight/obese and/or diabetic during pregnancy are heavier at birth and have an elevated risk of developing obesity and type 2 diabetes in both childhood and adult [lifehood](#).^{16, 20-21} The role of maternal overnutrition in the programming of obesity is supported by work in a number of animal models (see review²²) and these studies have begun to elucidate the mechanisms underlying this association.

These investigations have demonstrated that perinatal exposure to an increased nutrient supply is associated with altered food intake in the offspring. In rodents, feeding dams a high-fat, high-sugar diet during pregnancy and lactation results in altered development of the central neural network for appetite regulation in the offspring, and this is associated with persistent hyperphagia and increased body weight and fat mass throughout life.²³⁻²⁵ Importantly, the

hyperphagia in these programmed offspring is greatly exaggerated when the animals are exposed to a palatable diet after weaning.²⁵⁻²⁶ These observations suggested that prenatal exposure to highly palatable diets had the potential to shift not only the set point for appetite regulation, but also to increase the propensity of the offspring to overindulge in palatable foods in postnatal life.

A number of studies have set out to specifically test the impact of early life nutrition on food choices in the offspring and have provided direct evidence for the early programming of food preferences. Bayol and colleagues provided dams with a cafeteria diet consisting of a range of palatable foods during pregnancy and/or lactation, and demonstrated that offspring of 'junk food' fed dams consumed significantly more calories from junk food when given free access to a junk food diet after weaning when compared to offspring of dams fed a control diet.¹⁹ In our laboratory, we also found that offspring born to dams fed a cafeteria diet during pregnancy and lactation consumed more fat, but not more carbohydrate, compared to offspring from control dams when given free access to both a cafeteria diet and standard rat chow, and that this effect persisted from weaning until at least 3 months of age.²⁷ Importantly, Vucetic and colleagues have reported an increased preference for fat and sugar in the offspring of high-fat fed dams even when they were weaned on a standard (low-fat) rat chow until adulthood.²⁸ These results point to a persistent effect of early exposure to a palatable diet on the regulation of food preferences that is not easily reversed by nutritional interventions applied later in life.

To date, there have been limited attempts to investigate the relationship between perinatal nutritional exposures and patterns of dietary intake in later life in humans, largely because of the difficulty of obtaining reliable food intake data in human populations and of disentangling the biological influences of maternal diet during pregnancy with the maternal influence on

postnatal feeding ~~behaviour~~ behavior (social effects). Nevertheless, a study in the UK looking at 428 children of obese and lean parents have shown that offspring of obese parents have a higher preference for high-fat foods and less for vegetables at 4-5 years of age.²⁹ Moreover, Brion and colleagues demonstrated that increased intake of fat, protein or carbohydrate during pregnancy was directly correlated with increased intake of the same macronutrient by the child at 10 years of age. This provided evidence to support the existence of a relationship between the macronutrient intake of women during pregnancy and the subsequent food preferences of their children. Importantly, paternal diet and maternal postnatal diet were only weakly correlated with offspring food intake,⁸ thus highlighting the importance of maternal diet during pregnancy in the programming of food preferences.

If we accept that food preferences can be programmed by the perinatal nutritional experience, it is then important to establish whether there are specific windows in development during which this programming is most likely to occur. To date, however, the critical windows for the programming of food preferences remain unclear, and determining this is complicated by the fact that our knowledge of the development of the central reward pathway remains incomplete. The results of studies by Teegarden and colleagues, however, demonstrated that mice exposed to a high-fat diet only during the first week after weaning exhibited a preference for high-fat foods in adult life. This suggests, therefore, that the critical window for the programming of food preferences may extend well after birth, at least in rodents.³⁰ Whether it is possible to reverse the effects of perinatal exposure to a highly palatable diet on later food preferences by interventions applied after birth also remains an important question, and one which is of key particular importance in designing potential strategies for reversing the long term effects of perinatal exposure to palatable foods in human infants.

Investigations into the mechanisms through which a maternal junk food diet leads to the preference for junk food in the offspring have focused on the effects on development of the mesolimbic reward system in rodent models. Even though brain development persists after birth in the rodent, which differs from human infants where brain development is largely complete at birth, these models have provided valuable information on the development of the various neuronal network/systems in the brain, including the mesolimbic reward system.

The dopamine system

Rodent

The development of the dopamine system in the rat begins during embryonic life but is not complete until approximately the third postnatal week and the system is thought to be highly plastic throughout this time.³¹ The first mesolimbic dopamine neurons can be identified in the rat brain as early as embryonic day 12,³² and by embryonic day 17 and 18, large dopamine axon bundles have begun to enter the striatum, which includes the NAc, to form a complex network of fibres. Whilst dopamine axons are established in fetal life, this innervation is not complete until after the third week of postnatal life.³³ At birth, dopamine fibres in the NAc are present at a higher density than in adult rodents.³¹ During the first two weeks after birth, the main postsynaptic targets of dopamine neurons are dendrites.³¹ In the third week of postnatal life, the number of medium spiny neurons, which are the main neurons found in the NAc, rapidly increases and spine density peaks,³⁴ allowing more synaptic connections to be made. By the end of the third week, dopamine neuron organisation is much like that observed in the adult rat (**Figure 2**).³¹

Dopamine receptors are also present before birth in the rat, with the development of the dopamine receptor system in this model continuing into early neonatal life. Using *in situ*

hybridization, Schambra and colleagues showed that dopamine receptor D1 and, at a lower level, dopamine receptor D2 were both present in neural tissues of the fetal rat as early as gestational day 14.³⁵ From day 7 to day 21 of postnatal life, D2 is expressed at significantly higher levels than the D1 in the NAc and the level of expression of the two receptors equalises during the fourth week after birth (**Figure 2**).³⁶ The different ontogeny of development of the respective dopamine receptors is thought to be due to differences in the factors driving the expression of these two receptors during development, with expression of D1 being driven predominantly by dopamine levels, whilst dopamine seems to play only a limited role in the development of D2.³⁶

Human

There are few studies which have investigated the ontogeny of the dopamine system in humans, since these studies rely largely on tissues from medical terminations and are difficult to obtain. It has been established, however, that the development of the dopamine pathway in the fetus begins as early as 6-8 weeks gestation³⁷ and the fetal striatum exhibits immunoreactivity for tyrosine hydroxylase (the rate limiting enzyme in dopamine synthesis) and mRNA expression of the D1 dopamine receptor by as early as 12 weeks gestation.^{38,39} By 21 weeks gestation, the D2 dopamine receptor can also be detected in the striatum, with peak expression being reached 1 month after birth and remaining higher than adult levels until 9-10 years of age.⁴⁰ The dopamine active transporter (DAT) is present in the striatum by 32 weeks gestation,⁴⁰ raising the possibility that dopamine signalling may already be functional at this stage of development.

The opioid system

Rodent

Similar to the dopamine system, components of the opioid system can be detected early in embryonic development in rodents, but opioid signalling is not fully mature until well after birth. The endogenous opioids, including proopiomelanocortin products, proenkephalin products and prodynorphin products are all present at low levels before birth in the rat brain and increase in concentration with age, generally reaching peak concentrations by the fourth postnatal week.⁴¹ In line with the increase in the abundance of opioid peptides, opioid receptor binding increases with age to peak at around the third to fourth postnatal week.

An elegant study by Spain and colleagues, using specific radiolabelled ligands for each opioid receptor subtype (μ , κ , δ), has demonstrated that the different receptor subtypes each have distinct profiles of expression in the brain during development. The μ -opioid receptor, which is the main receptor subtype involved in the activation of the reward system following the intake of palatable foods, shows an initial decrease in binding during the first four days after birth, followed by a steady increase and peaks at postnatal day 21 (**Figure-2**).⁴² Whilst the κ -opioid receptor is also present at birth, it exhibits a much slower increase in binding, with only a 2 fold increase by the fourth postnatal week. Unlike the other two opioid receptors, the δ -opioid receptor was not detected at birth and only appeared in the second week, followed by a rapid increase in expression until the fourth week after birth. This study is, however, limited by the fact that it did not look at specific brain regions.⁴² Interestingly, a related study looking at μ -opioid receptor ontogeny specifically in the NAc showed a peak in binding during the first four days after birth, followed by a steady decrease⁴³ which, is in complete opposition to the forebrain findings presented by Spain and colleagues, suggesting that the development of the opioid system is region-specific. This binding pattern in the NAc is however, of particular interest given the importance of the NAc in reward ~~behaviour~~behaviors.

Human

As is the case for the dopamine system, studies on the development of the opioid system in the human are limited. Opioid system development appears to begin slightly after that of the dopamine system, however much like dopamine, the endogenous opioid, β -endorphin, has been detected early in gestation, and is thought to play a role in regulating fetal growth.³⁷ By 12 weeks gestation, expression of another endogenous opioid, enkephalin, has been detected in the fetal striatum.³⁸ The development of opioid receptors appears to occur well after the detection of endogenous opioids, with specific binding to the μ - and κ -opioid receptors occurring at 20 weeks gestation, followed by the appearance of the δ -opioid receptor.⁴⁴

The influence of maternal diet on reward circuitry development

The link between perinatal exposure to highly palatable diets and the increased preference for fat and/or sugar in the offspring has opened the question of the biological mechanism which underlies this association. The central pathways which control motivation and reward are an obvious target for the programming of food preference, and indeed several recent studies have provided evidence that a number of key components of this system are altered in juvenile and adult offspring exposed to a high-fat/high-sugar diet before birth. Naef and colleagues reported that the offspring of mothers fed a high-fat diet during the last week of gestation and during lactation had reduced dopamine release in the NAc in response to a drug stimulus and decreased expression of the D2 receptor in the VTA in adulthood,⁴⁵ implicating altered dopamine signalling in the offspring. On the other hand, Vucetic and colleagues reported that a maternal high-fat diet during pregnancy and lactation was associated with an increased expression of the μ -opioid receptor and dopamine active transporter (DAT), decreased expression of D1, D2 and dopamine- and cAMP-regulated neuronal phosphoprotein (DARPP-32) in the NAc, suggesting

that both the opioid and dopamine systems are affected by exposure to a highly palatable diet during fetal and early postnatal development.²⁸

We have also recently carried out studies in our own laboratory in order to determine the effect of maternal junk food feeding on the expression of key components of the reward circuitry in the offspring after exposure to a junk food diet at weaning. Gene expression of the key components of the dopamine and opioid signalling systems was determined at 6 weeks (juvenile) and 3 months (adult) of age.²⁷ An increase in μ -opioid receptor expression and a reduction in DAT expression were observed in the NAc of 6 week old offspring of junk food fed dams. ~~Furthermore, we recently found that the expression of the μ -opioid receptor was already elevated at weaning in male offspring of junk food dams (Ong and Muhlhauser, unpublished observations, 2011).~~ These results have led us to speculate that the increase in the

expression of opioid receptors in the NAc of the offspring is the primary event through which maternal high-fat/high-sugar feeding drives the increased preference for fat in these offspring after birth. Interestingly, although not surprisingly, the changes in mRNA expression of μ -opioid receptor and DAT observed at 6 weeks of age were completely reversed at 3 months of age, suggesting that there was a premature desensitisation of the reward system compared to the control offspring which were also weaned on junk food, an effect which would be expected to be associated with further increases in fat intake during adulthood.²⁷

In addition to the underlying molecular pathway, there are also conflicting opinions as to whether it is maternal overnutrition during pregnancy or the lactation/neonatal period that is the critical window for neuronal development. Bayol and colleagues found that offspring exposed to a junk food diet during suckling period consumed significantly more junk foods when they were weaned onto a junk food diet, compared to offspring exposed to a control diet

Commented [b1]: Don't think this is actually correct!

during the suckling period.¹⁹ This highlights the sensitivity of the lactation period to nutritional excess and its contribution to the programming of increased energy intake and adult obesity. This is in contrast to a study conducted in Leibowitz's laboratory, in which offspring of rat dams exposed to a high-fat diet during pregnancy, but not lactation, exhibited an increased expression of the endogenous opioid enkephalin in the hypothalamus at postnatal day 15, in conjunction with an increased preference for fat at postnatal day 50-60, whereas those exposed to a control diet *in utero* and a high-fat diet during lactation exhibited no such effects, suggesting that the prenatal period played the more important role in determining food preferences.²³ These contrasting reports, together with the relatively small number of studies conducted in this field, create a need for further investigation into the mechanisms and critical windows for the programming of food preferences.

Mechanisms for alterations of neonatal reward systems

Emerging evidence has supported the hypothesis that being exposed to a high-fat, high-sugar environment before birth and/or during early in life can lead to alterations within the mesolimbic reward system, resulting in an increased preference towards these foods after birth. The exact mechanistic causes of these changes are, however, much less clear. One suggestion has been that tastes from the maternal diet are transmitted to the fetus/neonate via the amniotic fluid and breast milk and influence the development of taste receptors such that the offspring develop an increased preference for these flavours after weaning. The transmission of flavours, in particular strong flavours such as garlic, to the amniotic fluid and breast milk has been demonstrated in an elegant series of studies by Mennella and colleagues which have provided evidence that neonates exposed to these specific flavours before birth exhibited an increased preference for ~~that the same~~ flavour after weaning.⁴⁶ However, the programming of food preferences by exposure to specific tastes during the perinatal period is not supported by all

studies. In work conducted by our laboratory, for example, we reported that the selection of junk foods favoured by the offspring of junk food fed dams was distinct from those favoured by the dam during pregnancy and lactation, suggesting that the programming of food preferences was macronutrient-specific and not related to taste.²⁷ Therefore, further studies are required in order to clarify the role of taste in the programming of food preferences.

Another important, and as yet unanswered question, is whether there are distinct roles of specific macronutrients in the maternal diet, in particular fat and sugar, in the programming of food preferences in the offspring. Teegarden and colleagues previously demonstrated that weanlings given 10 days exposure to a high-fat diet had an increased preference for these foods as adults, but the same effect was not observed for those offspring provided with a high-carbohydrate diet during this same period.³⁰ Given the contradicting and limited evidence available, it has been proposed that the effects of maternal palatable diets on the reward system are likely to be mediated indirectly through hormones such as leptin, insulin and ghrelin, as well as neuropeptides including orexins, GABA, serotonin and endogenous opioids which have all been shown to play a role in reward in adult rodents (see review⁴⁷). Since leptin, insulin and endogenous opioids have been implicated in the development of neural systems including the central appetite regulating network, they will be the focus of the remainder of the current review.

Leptin in the adult has a key role in energy homeostasis, acting in large part through the hypothalamic appetite regulating system, to inhibit appetite (For review see:^{48,49}). Importantly, leptin's anorexigenic effects have been shown to be partially mediated by regulation of reward systems. Leptin receptors co-localise with dopaminergic neurons in the VTA⁵⁰⁻⁵¹ and, in rodents, leptin infusion directly into the VTA suppresses food intake⁴⁸ whilst peripheral leptin

administration completely inhibits high-fat food conditioned place preference.⁵² In the fetus and neonate, leptin is thought to play a greater role in the development of neural systems than in the regulation of appetite or reward, since leptin administration to rat pups during the first 9-10 days after birth has no effect on food intake.⁵³ The timing of this apparent insensitivity to the actions of leptin coincides with a distinct surge in circulating leptin levels, which occurs between 7 and 10 days in rodents.⁵⁴ Interestingly, the leptin surge has been shown to be exaggerated in both its magnitude and duration in offspring of ~~obese~~-dams fed a high-fat diet during pregnancy and lactation, and this is thought to contribute to the hyperphagia observed in these offspring later in life.²⁵

The role of leptin as a neurotropic signal in the central neural network for appetite regulation has been elegantly demonstrated by the work of Bouret and colleagues, in which leptin deficient mice (Lep^{ob} / Lep^{ob}) were shown to have a reduced density of neural projections within the appetite regulating system, and that this deficit could be completely reversed by administration of leptin to these mice during the neonatal period (i.e. the principal period of neuronal development). Importantly, administering leptin in adult Lep^{ob} / Lep^{ob} mice (after neuronal development was completed) had no effect on neuronal density or appetite in these animals.⁵⁵ The similar regulatory functions leptin plays in both the reward and appetite circuitries of adults has led to the suggestion that leptin may have a similar developmental role in reward pathways. This is supported by studies showing that Lep^{ob} / Lep^{ob} mice have reduced dopamine release upon electrical stimulation of dopaminergic cells, possibly due to a deficiency in somatodendritic dopamine stores in the VTA of these mice.⁵⁶ Moreover, a study conducted by Sanchez and colleagues showed that rat offspring treated with leptin during the lactation period exhibited a lower preference for fat in adulthood.⁵⁷ This provides support for

the suggestion that exposure to high or low leptin concentrations early in life can alter subsequent food preferences in the offspring.

In addition to acting directly on the mesolimbic reward system, leptin may also act through indirect mechanisms, including its regulation of lateral hypothalamic orexin neurons, to impact food choices of offspring after birth. In adults, orexin neurons project directly into the VTA and the NAc shell⁵⁸⁻⁶⁰ and it has been shown that orexin activity in the VTA is needed to mediate the preference for high-fat food caused by opioid receptor activation.⁶¹ Consequently, Kelley and colleagues proposed an integrated hypothalamic-thalamic-striatal model for the regulation of food reward⁶² and it is possible that the development of these connections could be altered by exposure to an excess supply of palatable foods in early life. A study by Beck and colleagues demonstrated that the offspring of mothers who consumed a high-fat diet throughout pregnancy and lactation had an increased preference for fat and an increased expression of orexin mRNA in the lateral hypothalamus compared to control animals at weaning and that this expression was inversely proportional to circulating leptin concentrations in these animals.⁶³ Therefore, the actions of leptin, both direct and indirect, appear to play an important role ~~on~~ in the development of the reward circuitry to influence food choices in the offspring after birth.

Commented [b2]: Is this right?

Insulin plays an important role in the maturation of neurons within the central nervous system⁶⁴ and insulin receptors are expressed on neurons and astrocytes during early neuronal development.⁶⁵ Similar to leptin, perinatal hyperinsulinaemia is associated with impaired organisation of the hypothalamic appetite regulatory network, which can lead to hyperphagia and the development of obesity later in life.⁶⁶⁻⁶⁷ The connection between insulin and the development of the mesolimbic reward system is however, less well-defined. Nevertheless, in adult rodents, insulin receptors are found to co-localise with dopaminergic neurons in the

VTA,⁵⁰ indicating a potential role of insulin in modulating dopamine activity within the mesolimbic reward pathway. Indeed, insulin has been shown to increase the expression and activity of DAT⁶⁸ and hypoinsulinaemia induced by drugs or fasting reduces dopamine clearance in the striatum,⁶⁹⁻⁷⁰ which is associated with impaired insulin signalling and decreased DAT function.^{69,71,72} The role of insulin in mediating dopamine function and reward is consistent with the observation that insulin administration decreases sucrose self-administration⁷³ and conditioned place preference to high-fat foods in rats.⁵² Maternal obesity and overnutrition are associated with increased maternal and fetal glucose and insulin concentrations.^{74,75} Therefore, given the role of insulin in neuronal maturation and organisation of the hypothalamic pathways, as well as its ~~influence~~ role in the regulation of food reward, it is possible that perinatal hyperinsulinaemia could alter the development of the mesolimbic reward system in the offspring and therefore result in an increased preference for palatable foods later in life. However, ~~this~~ the role of insulin in the programming of food preferences remains to be demonstrated experimentally. hypothesis remains to be proven.

It has been previously established that exposure to morphine *in utero* can alter the reward circuitry of fetus and offspring, raising the possibility that increases in endogenous opioids could have similar effects.⁷⁶ Prenatal and early neonatal exposure to morphine have been demonstrated to result in decreases in μ -opioid receptor expression in early life⁷⁷⁻⁷⁸ and increased μ -opioid receptor expression in adult life.⁷⁹⁻⁸⁰ Previous studies have shown, however, that the effects of endogenous and exogenous opioids may not always be the same⁸¹⁻⁸² and therefore whether these effects can be replicated through increased exposure to endogenous opioids remains to be determined. Increases in endogenous opioids, particularly met-enkephalin have been observed in the NAc of rats consuming a high-fat diet⁸³ and, since opioids readily cross the placenta,⁸⁴ increases in maternal met-enkephalin would be expected to result

in increased concentrations of met-enkephalin in the fetal circulation. Indeed, the offspring of mothers fed on a high-fat diet have been shown to have an increased abundance of met-enkephalin 15 days after birth.²³ The idea that increases in neonatal enkephalin may program changes in reward circuitry development are supported by studies looking at the reward associated ~~behaviour~~ behavior of adults administered met-enkephalin in early life. Kastin and colleagues demonstrated that adult rats administered met-enkephalin in the first week of life had improved maze performance for a food reward when compared to control animals.⁸⁵ Similarly, administration of met-enkephalin together with exposure to an odor stimulus *in utero* led to increased preference for the same odour at 16 days of age.⁸⁶ These studies suggest a possible role for met-enkephalin in programming the developing reward circuitries of the offspring of mothers fed a palatable diet during pregnancy and lactation.

Summary and Perspectives

The concept that appetite can be permanently altered by exposure to an inappropriate supply of nutrients before birth has been established across a number of species. More recently, a number of studies have shown that not only overall food intake, but also an individual's preference for specific foods/macronutrients, can be influenced by the nutritional environment experienced before birth and early in life. A summary of the current hypothesis for the programming of food preferences is shown in Figure 3. The ability of perinatal exposure to an increased supply of fat and/or sugar to program an increased preference for palatable foods in the offspring is of particular relevance given the ready availability of these foods in modern society, and the fact that excess consumption of these foods is a major contributor to weight gain, obesity and its associated metabolic disorders. At present, our understanding of the biological/molecular mechanisms which underlie the programming of food preferences is

limited, and further studies are required. Whilst this review has highlighted several possible mechanisms for the programming of food preferences, this list is not exhaustive and further research is expected to provide insights into alternate biological pathways. By way of example, a recent study has indicated a role for epigenetics in the maternal high-fat diet programming of food preferences.²⁸ Given that consumption of high-fat diet is associated with epigenetic modification of the dopamine and opioid signalling systems within the mesolimbic reward pathway in adults,⁸⁷⁻⁸⁸ it is possible that this may also be one of the mechanisms through which food preferences are programmed before birth and in early life.

Whilst rodents provide a convenient model for delineating these mechanisms, the extent to which these will reflect the situation in humans is still unclear, and further studies mapping the development of the reward pathways in rodents and humans (and potentially other species) are required in order to be able to extrapolate the results of small animal studies into the clinical setting. Furthermore, virtually all studies to date which have focused on the reward pathway, be it in relation to its function in adults, development or response to prenatal nutritional alterations, have been carried out in males, and preliminary data from our own laboratory has shown that there are clear differences between males and females in their response to a junk food diet in adulthood and to exposure to a high-fat diet *in utero*.

There is still a great opportunity for studies in this field, and identifying strategies for intervention to block or inhibit the early programming of an increased preference for fat/sugar has the potential to offer a novel and effective means of curtailing the obesity epidemic.

Acknowledgements

Ong et al.

Maternal overnutrition and offspring food choices

BM is supported by a Career Development Award from the National Health and Medical Research Council of Australia. ZO is supported by a President's Scholarship from the University of South Australia. JG is supported by an Australian Postgraduate Award. The authors would also like to thank John Carragher for editorial assistance.

Statement of interest

No conflict of interest.

References

- [1] WHO (2011) World Health Organisation Fact Sheet: obesity and overweight. <http://www.who.int/mediacentre/factsheets/fs311/en/index.html>. [editor^editors]]. City: Publisher].
- [2] Thiele S, Mensink GB, Beitz R (2004) Determinants of diet quality *Public Health Nutrition* **7**, 29-37.
- [3] Vicennati V, Pasqui F, Cavazza C, et al. (2011) Cortisol, energy intake, and food frequency in overweight/obese women *Nutrition* **27**, 677-80.
- [4] Drewnowski A, Krahn DD, Demitrack MA, et al. (1992) Taste responses and preferences for sweet high-fat foods: Evidence for opioid involvement *Physiol Behav* **51**, 371-9.
- [5] Drewnowski A, Brunzell JD, Sande K, et al. (1985) Sweet tooth reconsidered: taste responsiveness in human obesity *Physiol Behav* **35**, 617-22.
- [6] Pasquet P, Frelut ML, Simmen B, et al. (2007) Taste perception in massively obese and in non-obese adolescents *Int J Pediatr Obes* **2**, 242-8.
- [7] Bayol S, Simbi B, Bertrand J, et al. (2008) Offspring from mothers fed a 'junk food' diet in pregnancy and lactation exhibit exacerbated adiposity that is more pronounced in females *J Physiol* **586**, 3219-30.
- [8] Brion M-JA, Ness AR, Rogers I, et al. (2010) Maternal macronutrient and energy intakes in pregnancy and offspring intake at 10 y: exploring parental comparisons and prenatal effects *Am J Clin Nutr* **91**, 748-56.
- [9] Johnson PM, Kenny PJ (2010) Dopamine D2 receptors in addiction-like reward dysfunction and compulsive eating in obese rats *Nat Neurosci* **13**, 635-41.
- [10] South T, Huang XF (2008) High-fat diet exposure increases dopamine D2 receptor and decreases dopamine transporter receptor binding density in the nucleus accumbens and caudate putamen of mice *Neurochem Res* **33**, 598-605.
- [11] Wang GJ, Volkow ND, Logan J, et al. (2001) Brain dopamine and obesity *The Lancet* **357**, 354-7.
- [12] Volkow ND, Wang GJ, Fowler JS, et al. (2008) Overlapping neuronal circuits in addiction and obesity: evidence of systems pathology *Philosophical Transactions of the Royal Society B: Biological Sciences* **363**, 3191-200.
- [13] Volkow ND, Wise RA (2005) How can drug addiction help us understand obesity? *Nat Neurosci* **8**, 555-60.
- [14] Nestler EJ (2005) Is there a common molecular pathway for addiction? *Nat Neurosci* **8**, 1445-9.
- [15] Gainetdinov RR, Jones SR, Fumagalli F, et al. (1998) Re-evaluation of the role of the dopamine transporter in dopamine system homeostasis *Brain Res Rev* **26**, 148-53.
- [16] Boney CM, Verma A, Tucker R, et al. (2005) Metabolic syndrome in childhood: association with birth weight, maternal obesity, and gestational diabetes mellitus *Pediatrics* **115**, e290.
- [17] Ravelli GP, Stein ZA, Susser MW (1976) Obesity in young men after famine exposure in utero and early infancy *N Engl J Med* **295**, 349-53.
- [18] Yura S, Itoh H, Sagawa N, et al. (2005) Role of premature leptin surge in obesity resulting from intrauterine undernutrition *Cell Metab* **1**, 371-8.
- [19] Bayol SA, Farrington SJ, Stickland NC (2007) A maternal "junk food" diet in pregnancy and lactation promotes an exacerbated taste for "junk food" and a greater propensity for obesity in rat offspring *Brit J Nut* **98**, 843-51.
- [20] Ehrenberg HM, Mercer BM, Catalano PM (2004) The influence of obesity and diabetes on the prevalence of macrosomia *Am J Obstet Gynecol* **191**, 964-8.
- [21] Sobngwi E, Boudou P, Mauvais-Jarvis F, et al. (2003) Effect of a diabetic environment in utero on predisposition to type 2 diabetes *The Lancet* **361**, 1861-5.
- [22] Li M, MH V (2011) Maternal Obesity and Developmental Programming of Metabolic Disorders in Offspring: Evidence from Animal Models *Exp Diabetes Res* **2011**.

- [23] Chang G-Q, Gaysinskaya V, Karatayev O, et al. (2008) Maternal High-Fat Diet and Fetal Programming: Increased Proliferation of Hypothalamic Peptide-Producing Neurons That Increase Risk for Overeating and Obesity *J Neurosci* **28**, 12107-19.
- [24] Chen H, Simar D, Morris MJ (2009) Hypothalamic neuroendocrine circuitry is programmed by maternal obesity: interaction with postnatal nutritional environment *PLoS ONE* **4**, e6259.
- [25] Kirk SL, Samuelsson A-M, Argenton M, et al. (2009) Maternal Obesity Induced by Diet in Rats Permanently Influences Central Processes Regulating Food Intake in Offspring *PLoS ONE* **4**, e5870.
- [26] Levin BE, Govek E (1998) Gestational obesity accentuates obesity in obesity-prone progeny *Am J Physiol Regul Integr Comp Physiol* **275**, R1374-R9.
- [27] Ong Z, Muhlhauser B (2011) Maternal "junk-food" feeding of rat dams alters food choices and development of the mesolimbic reward pathway in the offspring *The FASEB Journal*.
- [28] Vucetic Z, Kimmel J, Totoki K, et al. (2010) Maternal High-Fat Diet Alters Methylation and Gene Expression of Dopamine and Opioid-Related Genes *Endocrinology* **151**, 4756-64.
- [29] Wardle J, Guthrie C, Sanderson S, et al. (2001) Food and activity preferences in children of lean and obese parents *Int J Obes Relat Metab Disord* **25**, 971-7.
- [30] Teegarden SL, Scott AN, Bale TL (2009) Early life exposure to a high-fat diet promotes long-term changes in dietary preferences and central reward signaling *Neuroscience* **162**, 924-32.
- [31] Antonopoulos J, Dori I, Dinopoulos A, et al. (2002) Postnatal development of the dopaminergic system of the striatum in the rat *Neuroscience* **110**, 245-56.
- [32] Smidt MP, Burbach JPH (2007) How to make a mesodiencephalic dopaminergic neuron *Nat Rev Neurosci* **8**, 21-32.
- [33] Van den Heuvel DMA, Pasterkamp RJ (2008) Getting connected in the dopamine system *Prog Neurobiol* **85**, 75-93.
- [34] Tepper JM, Sharpe NA, Koós TZ, et al. (1998) Postnatal Development of the Rat Neostriatum: Electrophysiological, Light- and Electron-Microscopic Studies *Dev Neurosci* **20**, 125-45.
- [35] Schambra UB, Duncan GE, Breese GR, et al. (1994) Ontogeny of D1a and D2 dopamine receptor subtypes in rat brain using in situ hybridization and receptor binding *Neuroscience* **62**, 65-85.
- [36] Tarazi FI, Baldessarini RJ (2000) Comparative postnatal development of dopamine D1, D2 and D4 receptors in rat forebrain *Int J Dev Neurosci* **18**, 29-37.
- [37] Herlenius E, Lagercrantz H (2001) Neurotransmitters and neuromodulators during early human development *Early Hum Dev* **65**, 21-37.
- [38] Brana C, Charron G, Aubert I, et al. (1995) Ontogeny of the striatal neurons expressing neuropeptide genes in the human fetus and neonate *J Comp Neurol* **360**, 488-505.
- [39] Brana C, Aubert I, Charron G, et al. (1997) Ontogeny of the striatal neurons expressing the D2 dopamine receptor in humans: an in situ hybridization and receptor-binding study *Mol Brain Res* **48**, 389-400.
- [40] Meng SZ, Ozawa Y, Itoh M, et al. (1999) Developmental and age-related changes of dopamine transporter, and dopamine D1 and D2 receptors in human basal ganglia *Brain Res* **843**, 136-44.
- [41] McDowell J, Kitchen I (1987) Development of opioid systems: peptides, receptors and pharmacology *Brain Res Rev* **12**, 397-421.
- [42] Spain J, Roth B, Coscia C (1985) Differential ontogeny of multiple opioid receptors (μ , δ , and κ) *J Neurosci* **5**, 584-8.
- [43] Kornblum HI, Hurlbut DE, Leslie FM (1987) Postnatal development of multiple opioid receptors in rat brain *Dev Brain Res* **37**, 21-41.
- [44] Magnan J, Tiberi M (1989) Evidence for the presence of $[\mu]$ - and $[\kappa]$ - but not of $[\delta]$ -opioid sites in the human fetal brain *Dev Brain Res* **45**, 275-81.

- [45] Naef L, Moquin L, Dal Bo G, et al. (2011) Maternal high-fat intake alters presynaptic regulation of dopamine in the nucleus accumbens and increases motivation for fat rewards in the offspring *Neuroscience* **176**, 225-36.
- [46] Beauchamp GK, Mennella JA (2009) Early flavor learning and its impact on later feeding behavior *J Pediatr Gastroenterol Nutr* **48 Suppl 1**, S25-30.
- [47] Erlanson-Albertsson C (2005) How Palatable Food Disrupts Appetite Regulation *Basic & Clinical Pharmacology & Toxicology* **97**, 61-73.
- [48] Ahima RS, Flier JS (2000) Leptin *Annu Rev Physiol* **62**, 413.
- [49] Woods SC, Seeley RJ, Porte D, et al. (1998) Signals That Regulate Food Intake and Energy Homeostasis *Science* **280**, 1378-83.
- [50] Figlewicz DP, Evans SB, Murphy J, et al. (2003) Expression of receptors for insulin and leptin in the ventral tegmental area/substantia nigra (VTA/SN) of the rat *Brain Res* **964**, 107-15.
- [51] Hommel JD, Trinko R, Sears RM, et al. (2006) Leptin receptor signaling in midbrain dopamine neurons regulates feeding *Neuron* **51**, 801-10.
- [52] Figlewicz DP, Bennett J, Evans SB, et al. (2004) Intraventricular Insulin and Leptin Reverse Place Preference Conditioned With High-Fat Diet in Rats *Behavioral Neuroscience* **118**, 479-87.
- [53] Proulx K, Richard D, Walker C-D (2002) Leptin Regulates Appetite-Related Neuropeptides in the Hypothalamus of Developing Rats without Affecting Food Intake *Endocrinology* **143**, 4683-92.
- [54] Ahima RS, Prabakaran D, Flier JS (1998) Postnatal leptin surge and regulation of circadian rhythm of leptin by feeding. Implications for energy homeostasis and neuroendocrine function *J Clin Invest* **101**, 1020-7.
- [55] Bouret SG, Draper SJ, Simerly RB (2004) Trophic Action of Leptin on Hypothalamic Neurons That Regulate Feeding *Science* **304**, 108-10.
- [56] Roseberry AG, Painter T, Mark GP, et al. (2007) Decreased vesicular somatodendritic dopamine stores in leptin-deficient mice *J Neurosci* **27**, 7021-7.
- [57] Sánchez J, Priego T, Palou M, et al. (2008) Oral Supplementation with Physiological Doses of Leptin During Lactation in Rats Improves Insulin Sensitivity and Affects Food Preferences Later in Life *Endocrinology* **149**, 733-40.
- [58] Zheng H, Corkern M, Stoyanova I, et al. (2003) Appetite-inducing accumbens manipulation activates hypothalamic orexin neurons and inhibits POMC neurons *Am J Physiol Regul Integr Comp Physiol* **284**, R1436-R44.
- [59] Vittoz NM, Berridge CW (2005) Hypocretin//Orexin Selectively Increases Dopamine Efflux within the Prefrontal Cortex: Involvement of the Ventral Tegmental Area *Neuropsychopharmacology* **31**, 384-95.
- [60] Korotkova TM, Sergeeva OA, Eriksson KS, et al. (2003) Excitation of Ventral Tegmental Area Dopaminergic and Nondopaminergic Neurons by Orexins/Hypocretins *J Neurosci* **23**, 7-11.
- [61] Zheng H, Patterson LM, Berthoud H-R (2007) Orexin Signaling in the Ventral Tegmental Area Is Required for High-Fat Appetite Induced by Opioid Stimulation of the Nucleus Accumbens *J Neurosci* **27**, 11075-82.
- [62] Kelley AE, Baldo BA, Pratt WE (2005) A proposed hypothalamic–thalamic–striatal axis for the integration of energy balance, arousal, and food reward *J Comp Neurol* **493**, 72-85.
- [63] Beck B, Kozak R, Moar KM, et al. (2006) Hypothalamic orexigenic peptides are overexpressed in young Long–Evans rats after early life exposure to fat-rich diets *Biochem Biophys Res Commun* **342**, 452-8.
- [64] Recio-Pinto E, Rechler MM, Ishii DN (1986) Effects of insulin, insulin-like growth factor-II, and nerve growth factor on neurite formation and survival in cultured sympathetic and sensory neurons *J Neurosci* **6**, 1211-9.
- [65] Baron-Van Evercooren A, Olichon-Berthe C, Kowalski A, et al. (1991) Expression of IGF-I and insulin receptor genes in the rat central nervous system: a developmental, regional, and cellular analysis *J Neurosci Res* **28**, 244-53.

- [66] Harder T, Plagemann A, Rohde W, et al. (1998) Syndrome X-like alterations in adult female rats due to neonatal insulin treatment *Metabolism* **47**, 855-62.
- [67] Plagemann A, Harder T, Janert U, et al. (1999) Malformations of hypothalamic nuclei in hyperinsulinemic offspring of rats with gestational diabetes *Developmental neuroscience* **21**, 58-67.
- [68] Patterson TA, Brot MD, Zavosh A, et al. (1998) Food deprivation decreases mRNA and activity of the rat dopamine transporter *Neuroendocrinology* **68**, 11-20.
- [69] Owens WA, Sevak RJ, Galici R, et al. (2005) Deficits in dopamine clearance and locomotion in hypoinsulinemic rats unmask novel modulation of dopamine transporters by amphetamine *J Neurochem* **94**, 1402-10.
- [70] Sevak RJ, Koek W, Owens WA, et al. (2008) Feeding conditions differentially affect the neurochemical and behavioral effects of dopaminergic drugs in male rats *Eur J Pharmacol* **592**, 109-15.
- [71] Zhen J, Reith ME, Carr KD (2006) Chronic food restriction and dopamine transporter function in rat striatum *Brain Res* **1082**, 98-101.
- [72] Speed N, Saunders C, Davis AR, et al. (2011) Impaired striatal Akt signaling disrupts dopamine homeostasis and increases feeding *PLoS ONE* **6**, e25169.
- [73] Figlewicz DP, Bennett JL, Naleid AM, et al. (2006) Intraventricular insulin and leptin decrease sucrose self-administration in rats *Physiol Behav* **89**, 611-6.
- [74] Horvath TL, Bruning JC (2006) Developmental programming of the hypothalamus: a matter of fat *Nat Med* **12**, 52-3; discussion 3.
- [75] Dabelea D (2007) The predisposition to obesity and diabetes in offspring of diabetic mothers *Diabetes Care* **30 Suppl 2**, S169-74.
- [76] Vathy I, Slambergova R, Rimanoczy A, et al. (2003) Autoradiographic evidence that prenatal morphine exposure sex-dependently alters [mu]-opioid receptor densities in brain regions that are involved in the control of drug abuse and other motivated behaviors *Prog Neuropsychopharmacol Biol Psychiatry* **27**, 381-93.
- [77] Tempel A, Habas JE, Paredes W, et al. (1988) Morphine-induced downregulation of [mu]-opioid receptors in neonatal rat brain *Dev Brain Res* **41**, 129-33.
- [78] Kirby ML, Aronstam RS (1983) Levorphanol-sensitive [3H]naloxone binding in developing brainstem following prenatal morphine exposure *Neurosci Lett* **35**, 191-5.
- [79] Handelmann GE, Quirion R (1983) Neonatal exposure to morphine increases [mu] opiate binding in the adult forebrain *Eur J Pharmacol* **94**, 357-8.
- [80] Vathy I, Slambergová R, Rimanóczy Á, et al. (2003) Autoradiographic evidence that prenatal morphine exposure sex-dependently alters [mu]-opioid receptor densities in brain regions that are involved in the control of drug abuse and other motivated behaviors *Prog Neuropsychopharmacol Biol Psychiatry* **27**, 381-93.
- [81] Burford NT, Tolbert LM, Sadee W (1998) Specific G protein activation and μ -opioid receptor internalization caused by morphine, DAMGO and endomorphin I *Eur J Pharmacol* **342**, 123-6.
- [82] Keith DE, Murray SR, Zaki PA, et al. (1996) Morphine activates opioid receptors without causing their rapid internalization *J Biol Chem* **271**, 19021.
- [83] Chang GQ, Karatayev O, Barson JR, et al. (2010) Increased enkephalin in brain of rats prone to overconsuming a fat-rich diet *Physiol Behav* **101**, 360-9.
- [84] Chandorkar GA, Ampasavate C, Stobaugh JF, et al. (1999) Peptide transport and metabolism across the placenta *Adv Drug Delivery Rev* **38**, 59-67.
- [85] Kastin AJ, Kostrzewa RM, Schally AV, et al. (1980) Neonatal administration of met-enkephalin facilitates maze performance of adult rats *Pharmacol Biochem and Behav* **13**, 883-6.
- [86] Stickrod G, Kimble DP, Smotherman WP Met-enkephalin effects on associations formed in utero *Peptides* **3**, 881-3.
- [87] Vucetic Z, Carlin J, Totoki K, et al. (2012) Epigenetic dysregulation of the dopamine system in diet-induced obesity *J Neurochem*.
- [88] Vucetic Z, Kimmel J, Reyes TM (2011) Chronic high-fat diet drives postnatal epigenetic regulation of mu-opioid receptor in the brain *Neuropsychopharmacology* **36**, 1199-206.

Figure 1

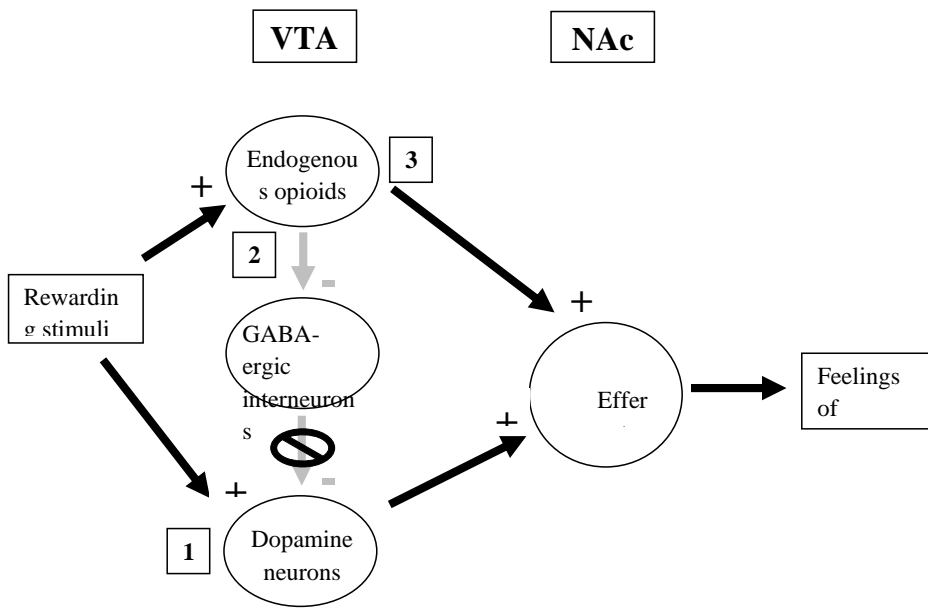


Figure 2

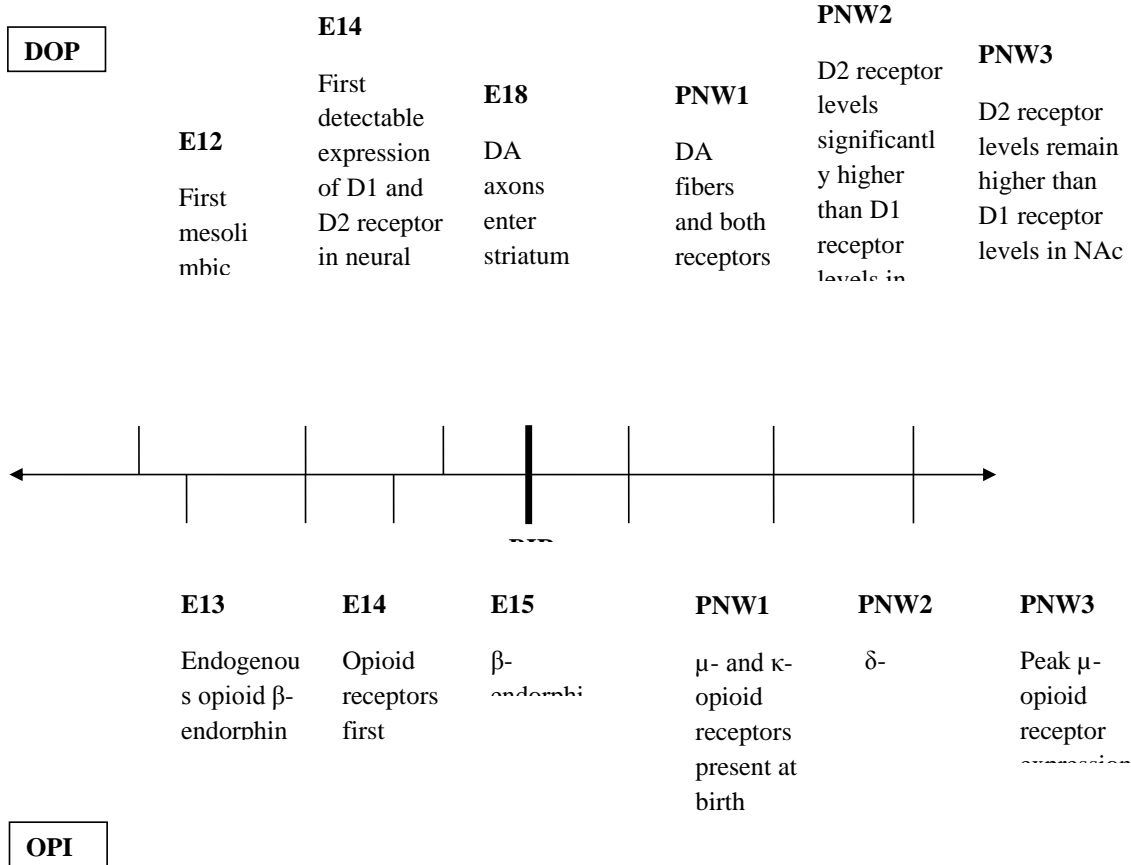


Figure 3

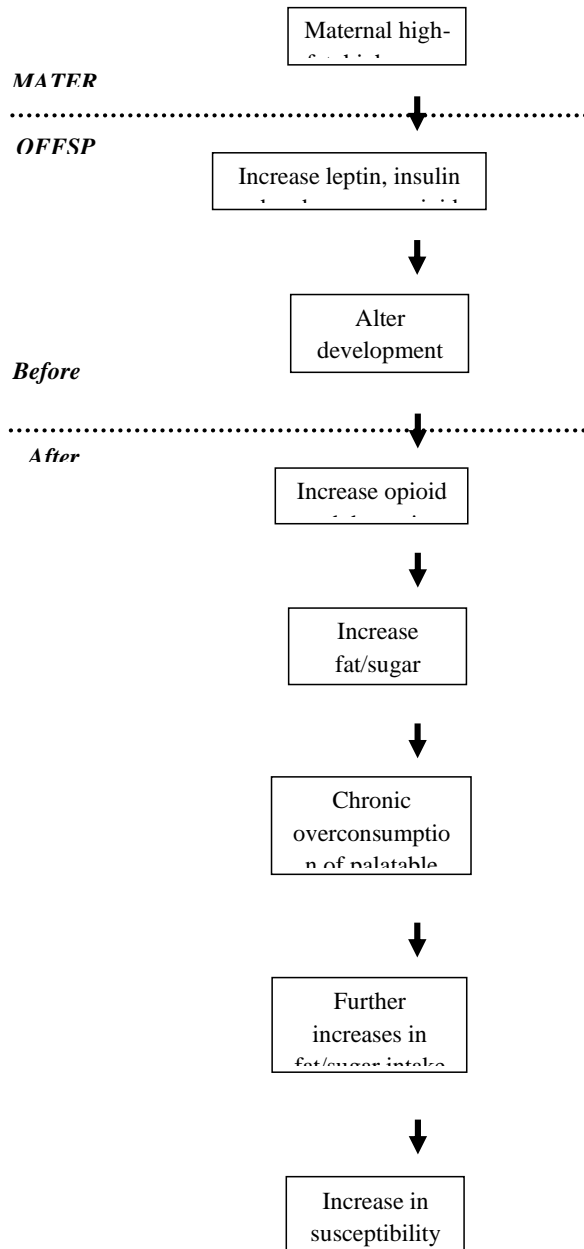


Figure Legends

Figure 1: *Simplified version of the activation of the mesolimbic reward system.* 1) A rewarding stimulus such as drugs and palatable foods can stimulate the dopamine neurons at the VTA, resulting in the release of dopamine at the NAc. 2) The rewarding stimulus can activate the release of endogenous opioids at the VTA, which inhibits GABA-ergic interneurons. GABA normally inhibits dopamine release. Therefore, this inhibition of GABA release disinhibits dopamine neurons resulting in increased dopamine release at the NAc. 3) Opioids can also bind to their receptors located at the NAc. The activation of efferent target neurons at the NAc through 1), 2) and 3) creates the pleasurable feeling associated with the rewarding stimuli. Black and grey arrows indicate neuronal activation and inhibition respectively. Neurons are represented in the circles.

Figure 2: *Ontogeny of dopamine and opioid systems.* Timeline depicting the development of the dopamine (top) and opioid (bottom) systems within the mesolimbic reward system throughout prenatal and the first 3 weeks of postnatal life in the rodent. By postnatal week 3, dopamine and opioid systems are similar to that of an adult. Abbreviations: DA, dopamine; E, embryonic day; NAc, nucleus accumbens; MSN, medium spiny neuron; PNW, postnatal week; VTA, ventral tegmental area. See text for references.

Figure 3: *Current hypothesis for the early origins of a taste for fat.* A maternal high-fat, high-sugar diet during pregnancy and lactation can lead to the increase in levels of leptin, insulin and endogenous opioids which can pass through the placenta (during pregnancy) and milk (during lactation) to the offspring. The elevated leptin, insulin and opioid levels in the offspring is postulated to alter the development of the mesolimbic reward system, during its critical windows of development, when the neuronal connections are actively developing. This can

Ong et al.

Maternal overnutrition and offspring food choices

result in permanent alterations in opioid and dopamine signalling which is associated with the increased preference for fat throughout life. This continuous consumption of high-fat foods can eventually lead to the onset of later obesity.